

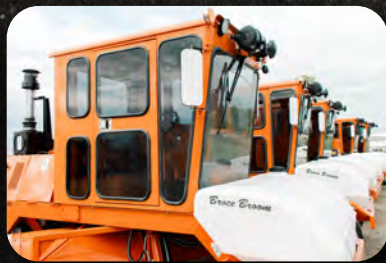
THE ORIGINAL, THE LEADER

Broce Broom

350 *series*

For over 60 years, the Broce 350 has led the sweeper market through unparalleled reliability and efficiency. Broce's place as the industry leader has been earned with hard work, innovation, and dedication to our customers.

Build better with Broce Broom.



PRODUCT FEATURES

- ✓ Turn Table Brush Mounting on Swing Frame for Core Stability
- ✓ 16" Tires with 6-Hole Wheels
- ✓ 4-Wheel Hydraulic Disc Brakes
- ✓ Hydraulic Brush Controls
- ✓ Positive Neutral Shift for Towing
- ✓ Fully Functional 2-Door Cab
- ✓ Tilt Back Engine Cover for Full Engine Access



Scan
For More
Details

For More Information :

📞 **866-579-2488**



POPULAR APPLICATIONS

- Cleaning behind a milling machine
- Road paving and clean-up
- Chip Seal Sweeping
- Landfill & Quarry Road Maintenance
- Airport Runway & Maintenance Sweeping
- Industrial Yard & Trucking Sweeping

CONTACT INFORMATION

AVAILABLE OPTIONS

- 2-Door Cab
- 150 Gallon Water System
- Cab Heater/Defroster & Air Conditioning
- Suspension Seat
- 7 ½' Front Scraper Blade
- Broom Side-Shift Option
- Curb & Gutter Attachment
- ✳ See other options on our website



BROCE
MANUFACTURING

Broce Manufacturing Co.

📍 1460 S 2nd Ave, Dodge City, Kansas 67801

🌐 www.brocebroomparts.com
www.brocebroom.com