

**FELLING TRAILERS**

# TSA - TILT SLIDE AXLE SERIES



**FT-80-3 TSA**  
53' overall length

Join Us Online  
[f](#) [t](#) [YouTube](#)



The **FELLING** Style  
Quality ~ Craftsmanship ~ Pride



**TSA-100**

*Since 1974*

# TSA SERIES

## TSA- Tilt Slide Axle Trailers

### KEY Features:

- (6) 5" Rollers, (2) V-rollers and Pad Hydraulic Sliding Axle System
- Scrapers located in front of Rollers
- 4.5" Dual Ram Slide Axle Cylinder - Retracted Slide Axle Cylinder in transport position, prevents the ram from being exposed to the elements
- Knife Edge Approach with Chain Slots



FT-80-3 TSA - 53' overall length shown with optional 20,000 lb Hydraulic Winch, 120" deck width, wireless remote for winch, 255R22.5 tires & white paint

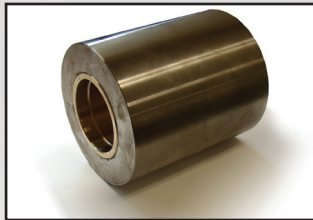


FT-80-3 TSA - 53' overall length shown with optional 20,000 lb Hydraulic Winch, 108" deck width, pony motor, 3 bar low profile winches (weld on) with C-hook across from winch

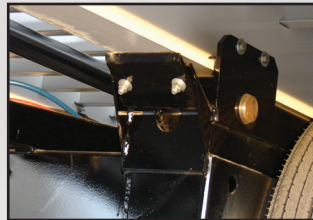
## FEATURES & OPTIONS



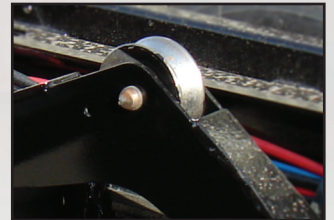
STD. 4.5" Dual Ram Slide Axle Cylinder - Retracted Slide Axle Cylinder in Transport Position



STD. (6) 5" Rollers



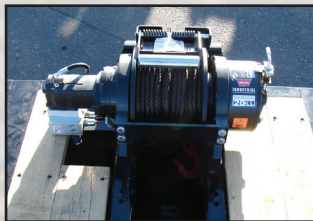
STD. Adj. Beam Scrapers in front of rollers to clear potential debris from the beam



STD. (2) 4.5" V-Roller Support/Guides



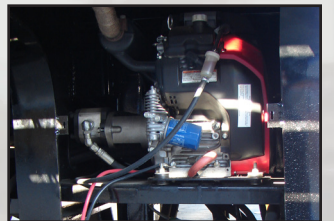
OPT. 3 Bar Low Profile Winches (weld-on) w/ J-Hook Across from Winch



OPT. 20,000 lb. Hydraulic Winch - Requires Wet Kit on Truck



STD. Central Grease Zerk location - located at the rear of the trailer



OPT. 22 HP Self Contained Hydraulic System w/ Elec. Start



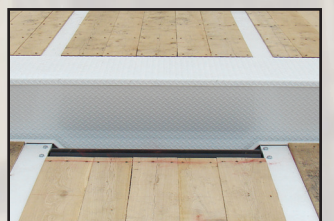
OPT. Weather Proof Box for Air Controls & Pressure Gauge



STD. (2) 6" x 24" Tilt Cylinders



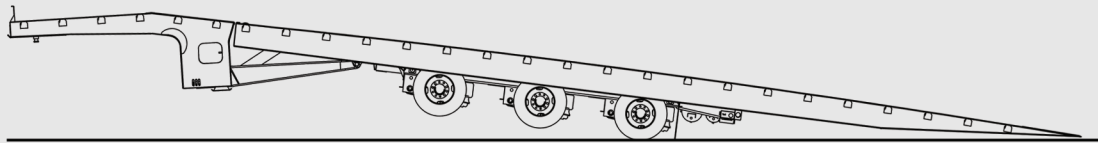
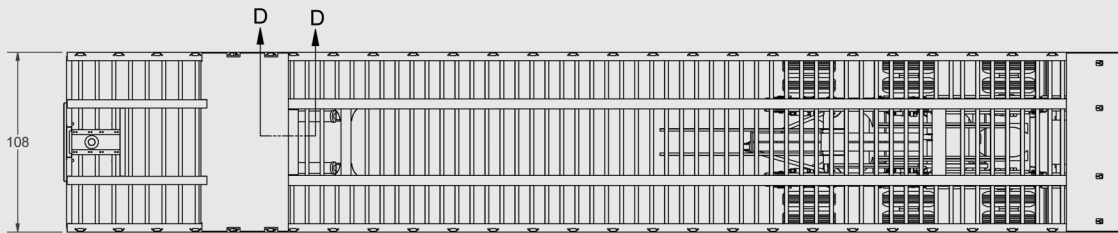
STD. Stowage Space with Door



OPT. Winch Cable Roller - protects winch cable from the sharp edge of the main deck when tilted.

# SPECIFICATIONS & FEATURES

## TSA- Tilt Slide Axle Trailers



### STANDARD FEATURES:

- Hydraulic Power Up & Down & Slide Axle System
- Engineered, Cambered, Fabricated 1/4" x 14" Main Beams, 3/4" x 6" flanges
- Engineered, Cambered, Fabricated 1/4" x 16" Side Rails, 1/2" x 3" Flanges
- Pierced 4" Jr. I-Beam Crossmembers on 9" Centers
- Hydraulic Tilt- ing Main Deck - up to 15° tilting angle
- 200,000 lb. Twin 2-speed, Holland Mark V (62,000 lb Lift Capacity)
- Chain Slots with Stake Pockets Every 2'

Model	FT-70-2 TSA	FT-80-3 TSA	FT-100-3 TSA
<b>GVWR</b>	89,000 lbs. (40,369 kg.)	101,800 lbs. (46,175 kg.)	122,000 lbs. (55,338 kg.)
<b>Approx. Weight (Empty)</b>	19,000 lbs. (8,618 kg.)	21,800 lbs. (9,888 kg.)	22,800 lbs. (10,341 kg.)
<b>Load Capacity (Distributed)</b>	70,000 lbs. (31,751 kg.)	80,000 lbs. (36,287 kg.)	100,000 lbs. (45,359 kg.)
<b>Net Frame Capacity 16'</b>	52,000 lbs. (31,751 kg.)	60,000 lbs. (27,215 kg.)	70,000 lbs. (31,751 kg.)
<b>Deck Height (Loaded)</b>	39.5" (100 cm.)	39.5" (100 cm.)	39.5" (100 cm.)
<b>Deck Length (Main Deck)</b>	37' (11.2 m.) 48' Overall (14.63 m.)	42' (12.8 m.) 53' Overall (16.15 m.)	42' (12.8 m.) 53' Overall (16.15 m.)
<b>Deck Width</b>	102" OD (2.59 m.)	102" OD (2.59 m.)	102" OD (2.59 m.)
<b>Deck Material</b>	2" White Oak Nominal	2" White Oak Nominal	2" White Oak Nominal
<b>Upper Deck</b>	90° 11' Deck (3.04 m.)	90° 11' Deck (3.04 m.)	90° 11' Deck (3.04 m.)
<b>King Pin Setback</b>	16" (40 cm.)	16" (40 cm.)	16" (40 cm.)
<b>Cylinders</b>	(2) 6" x 24" Tilt Cylinders	(2) 6" x 24" Tilt Cylinders	(2) 6" x 24" Tilt Cylinders
<b>Main Frame</b>	Cambered Fab. 1/4" x 14", 3/4" x 6" Flanges	Cambered Fab. 1/4" x 14", 3/4" x 6" Flanges	Cambered Fab. 1/4" x 14", 3/4" x 6" Flanges
<b>Crossmembers</b>	Pierced 4" Jr. I-Beam on 9" Centers	Pierced 4" Jr. I-Beam on 9" Centers	Pierced 4" Jr. I-Beam on 9" Centers
<b>Jack</b>	200,000 lb. Twin 2-Speed Holland Mark V	200,000 lb. Twin 2-Speed Holland Mark V	200,000 lb. Twin 2-Speed Holland Mark V
<b>Tie Downs</b>	Chain Slots with Stake Pockets Every 2'	Chain Slots with Stake Pockets Every 2'	Chain Slots with Stake Pockets Every 2'
<b>Axle Capacity (Oil Bath)</b>	(2) 25K Meritor Oil Bath	25K Meritor Oil Bath (Axle 1 & 2) 30K Meritor Oil Bath (Axle 3)	25K Meritor Oil Bath (Axle 1 & 2) 30K Meritor Oil Bath (Axle 3)
<b>Suspension</b>	49" Spread Air Ride with Dump Valve	55" Spread Air Ride with Dump Valve	55" Spread Air Ride with Dump Valve
<b>Brakes</b>	Air, ABS 2S/1M	Air, ABS 2S/1M	Air, ABS 2S/1M
<b>Tires/Wheels</b>	(8) 235/75R 17.5 H, 8 Bolt Hub Pilot	(12) 235/75R 17.5 H, 8 Bolt Hub Pilot	(12) 235/75R 17.5 H, 8 Bolt Hub Pilot
<b>Electrical DOT/SAE Approved</b>	Sealed Beam LED Lights, Sealed Wiring Harness, Mid Turn LED Lights	Sealed Beam LED Lights, Sealed Wiring Harness, Mid Turn LED Lights	Sealed Beam LED Lights, Sealed Wiring Harness, Mid Turn LED Lights
<b>Paint - 3 Year Warranty</b>	Completed trailer is fully grit-blasted for superior paint adhesion, primed with 2-coats of a rust prohibitive primer, and then painted with 3-coats of high gloss urethane topcoat, electrostatically applied.		

Measurements are approximate • Some models may be shown with optional equipment • All specifications are subject to change.

# The **FELLING** Style Quality - Craftsmanship - Pride

**FELLING** Trailers, Inc. has grown from a small shop in 1974 to a factory and office complex that today covers over 132,000 square feet. **FELLING** Trailers currently manufactures over 3,000 trailers a year and its standard trailer line includes over 220 models. **FELLING** Trailers' current capabilities allows them to provide a high quality product that is distributed across North America and internationally. We hold a strong commitment to quality craftsmanship and customer satisfaction. We put our reputation on the line with every **FELLING** Trailer that is manufactured and we stand behind each trailer with our 5-year structural warranty and a 3-year paint warranty. That's our style and that's why so many people throughout North America and internationally have made the **FELLING** Style their own.



To learn more about us, have us mail you a specific full color brochure, or locate our nearest Felling Dealer, go to [www.felling.com](http://www.felling.com) or give us a call at 1-800-245-2809



Your **FELLING TRAILERS** Dealer:

# **FELLING** **TRAILERS**

Manufactured & Distributed by: **Felling Trailers, Inc.**  
1525 Main St. S. • Sauk Centre, MN 56378  
(320) 352-5239 • (320) 352-5230 FAX

Visit us online at [www.felling.com](http://www.felling.com)

E-mail us at: [trailers@felling.com](mailto:trailers@felling.com)

Call **1-800-245-2809** for your nearest dealer.