
R 992 Litronic

LIEBHERR

Crawler excavator

**Generation**

6.2

Engine

420 kW / 563 HP

Tier 4 Final

Operating weight

Backhoe: 96,500 kg / 212,750 lb

Shovel: 93,300 kg / 205,690 lb

Bucket capacity

Backhoe: 2.00–6.80 m³ / 2.62–8.89 yd³

Shovel: 5.10–6.00 m³ / 6.67–7.85 yd³

Experience progress: R 992

Equipment

- Wide choice of backhoe front boom and stick configurations
- Welded structure with cast steel components for improved stress-resistance and longer service life
- Safety check valves to prevent boom and stick cylinder pipes from bursting, with integrated regeneration system for lower fuel consumption

Buckets

- Different levels of protection to suit different areas of application:
 - Standard for loose, non-abrasive materials
 - HD for hard-to-break, moderately abrasive materials
 - HDV for highly abrasive materials
- Different blade designs:
 - straight (for earth-moving and grading)
 - semi-delta (for hard-to-break, hard-to-extract materials)
 - delta (for compacted or slightly cracked materials)

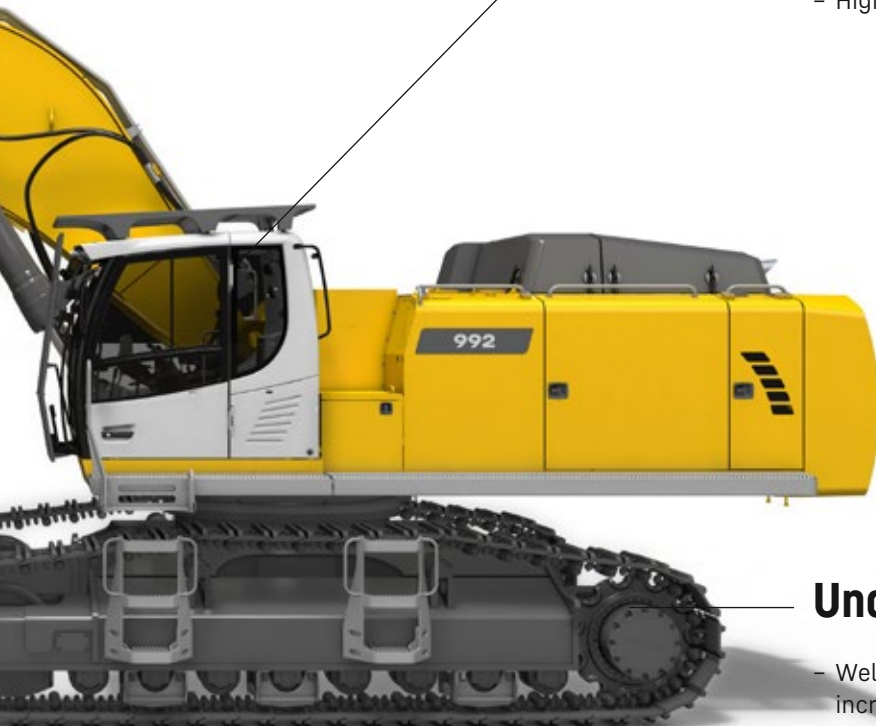


New functions / options

- **Liebherr Power Efficiency – Engine Control**
Up to 10% lower fuel consumption
- **Bucket Fill Assist**
Automatic bucket-filling cycle for increased productivity
- **Modetronic**
Customizable operating modes for optimum adjustment of work cycles to each type of application

Comfort

- Quiet, comfortable cab, the largest and most spacious in its category
- Seat with heater and pneumatic multi-directional shock absorption (air conditioning optional)
- High-resolution 9" color touchscreen



Undercarriage

- Welded undercarriage with rigid X profile for increased robustness
- Chamfered rack pads with double grouser for more maneuverability on difficult terrain
- Moulded two-tooth sprocket for longer service life
- Track rollers on double bearings for increased reliability and durability over time
- Stronger travel motor housing protection for improved resistance to wear and tear from hard, abrasive rocks

Experience progress: R 992 Shovel

Safety

- Completely unobstructed panoramic view, plus rear-view and side-view monitoring cameras for increased safety
- Retractable console for safe and easy access to the cab
- Impact-resistant windscreen and roof glass panel
- Cab riser for the best possible view of the loading area (optional)

Equipment

- Cast steel parts
- Shovel attachment with parallel drivetrain for powerful, even penetration
- Bucket cylinders positioned under the equipment for better protection against the elements
- Safety valves on boom cylinder for pipe burst protection

Buckets

- The front shovel is the perfect shape for digging deep into the material and for a high filling rate
- Several levels of protection for the front shovel, depending on requirements:
 - Type I: Non-abrasive materials, such as limestone without flint
 - Type II: Shot material, or easily breakable rock (classification 3 to 4 according to DIN 18300)
 - Type III: Highly abrasive materials, such as rocks with a high silica content, sandstone, granite, etc.
- Different design of blades: straight blade (loading), semi-delta (compacted materials), delta (direct excavation)
- Front shovel with semi-automatic flap closure, ideally shaped for optimum material penetration and high filling rate





Cab

- Comfortable and ergonomic design
- 9" high-resolution colour touch screen
- Wider for more comfort
- Impact resistant windows at the front and in the roof as standard
- Optional FOPS and FGPS protection guards
- Operator's cab with a fixed riser for a full view over the work area

Maintenance

- Access platform for engine and hydraulic control block compartments to enable safe, ergonomic maintenance work
- Left and right catwalks as standard; wide catwalks with hand rail optional
- Automatic central lubrication system as standard
- Shut-off valve on hydraulic tank outlet as standard

Technical data



Engine

Rating	
per SAE J1349	563 HP (420 kW) at 1,800 rpm
per ISO 9249	571 HP (420 kW) at 1,800 rpm
Torque	2,939 Nm at 1,300 rpm / 2,170 lbf ft at 1,300 rpm
Model	Liebherr D9508 A7 SCR
Type	8 cylinder V engine
Bore	128 mm / 5.0 in
Stroke	157 mm / 6.2 in
Displacement	16.16 l / 986 in³
Engine operation	4-stroke diesel Common-Rail
Exhaust gas treatment	Tier 4 Final SCR Filter Passive regeneration by thermo management
Cooling system	Water-cooled and integrated motor oil cooler, after-cooled and fuel cooled
Air cleaner	Dry-type air cleaner with pre-cleaner, primary and safety elements
Fuel tank	1,498 l / 396 gal
Urea tank	180 l / 48 gal
Electrical system	
Voltage	24 V
Batteries	2 x 180 Ah / 12 V
Starter	24 V / 7.8 kW
Alternator	Three-phase current 28 V / 140 A
Engine idling	Sensor controlled
Motor management	Connection to the integrated excavator system controlling via CAN-BUS to the economical utilisation of the service that is available



Hydraulic controls

Power distribution	Via control valves in single block with integrated safety valves
Flow summation	To boom and stick
Closed-loop circuit	For uppercarriage swing drive
Servo circuit	Electro-hydraulic control
Equipment and swing	Proportional via joystick levers
Travel	- Proportional control via foot pedals or removable levers - Speed pre-selection
Additional functions	Proportional regulation via foot pedals or mini-joystick



Hydraulic system

Hydraulic pumps	
For equipment and travel drive	Two Liebherr variable displacement, swashplate pumps
Max. flow	2 x 498 l/min. / 2 x 131 gpm
Max. pressure	350 bar / 5,076 psi
For swing drive	Reversible, variable displacement, swashplate pump, closed-loop circuit
Max. flow	315 l/min. / 83 gpm
Max. pressure	350 bar / 5,076 psi
Pump regulation	Electro-hydraulic with electronic engine speed sensing regulation, minimum flow adjustment, flow compensation, high flow
Hydraulic tank	536 l / 142 gal
Hydraulic system	1,134 l / 300 gal
Filtration	2 full flow filters in return line with integrated fine filter area (5 µm / 2,500 mesh)
Cooling system	Cooler for transmission pump oil and cooler for oil and condenser of air-conditioning with hydrostatically controlled fan drives
MODE selection	Adjustment of engine and hydraulic performance via a mode pre-selector to match application, e.g. for especially economical and environmentally friendly operation or for maximum digging performance and heavy-duty jobs
RPM adjustment	Stepless adjustment of engine output via RPM at each selected mode
Tool Control	20 pre-adjustable pump flows and pressures for add-on attachments



Swing drive

Drive	Liebherr swashplate motor with integrated brake valve
Transmission	Liebherr compact planetary reduction gears
Swing ring	Liebherr, sealed race ball bearing swing ring, internal teeth
Swing speed	0-5.9 rpm stepless
Swing torque	295 kNm / 217,581 lbf ft
Holding brake	Wet multi-disc (spring applied, pressure released)


Cab

Cab	LED work headlights integrated in the ceiling, a door with a sliding window (can be opened on both sides), large storing box and several stowing possibilities, shock-absorbing suspension, sound damping insulating, tinted laminated safety glass, separate window shades for the sunroof window and windscreen, cigarette lighter and 12V plug, storage bins, lunchbox, cup holder
Operator's seat	Liebherr-Comfort seat, airsprung with automatic weight adjustment, vertical and longitudinal seat damping including consoles and joysticks. Seat and armrests adjustable separately and in combination (adjustable in length, height and inclination), seat heating as standard
Arm consoles	Oscillating consoles with seat, tiltable console left
Operation and displays	Large high-resolution operating unit, intuitive, color display with touchscreen, video-compatible, numerous setting, control and monitoring options, e.g. air conditioning control, fuel consumption, machine and attachment parameters
Air-conditioning	Automatic air-conditioning, recirculated air function, fast de-icing and demisting at the press of a button, air vents can be operated via a menu. Recirculated air and fresh air filters can be easily replaced and are accessible from the outside. Heating-cooling unit, designed for extreme outside temperatures, sensors for solar radiation, inside and outside temperatures
Noise emission	
ISO 6396	72 dB(A) = L_{pA} (inside cab)
2000/14/EC	109 dB(A) = L_{WA} (surround noise)

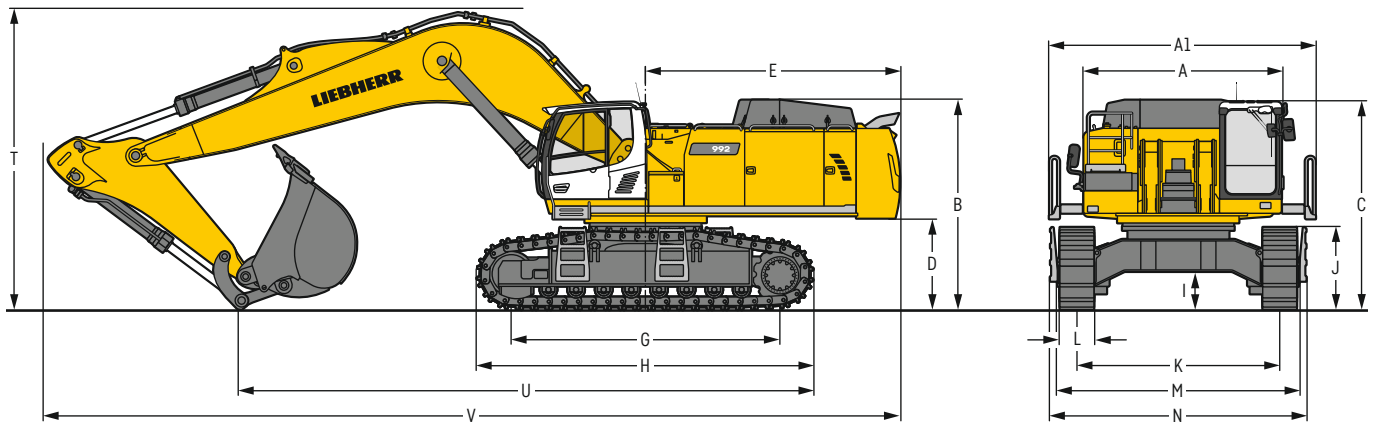
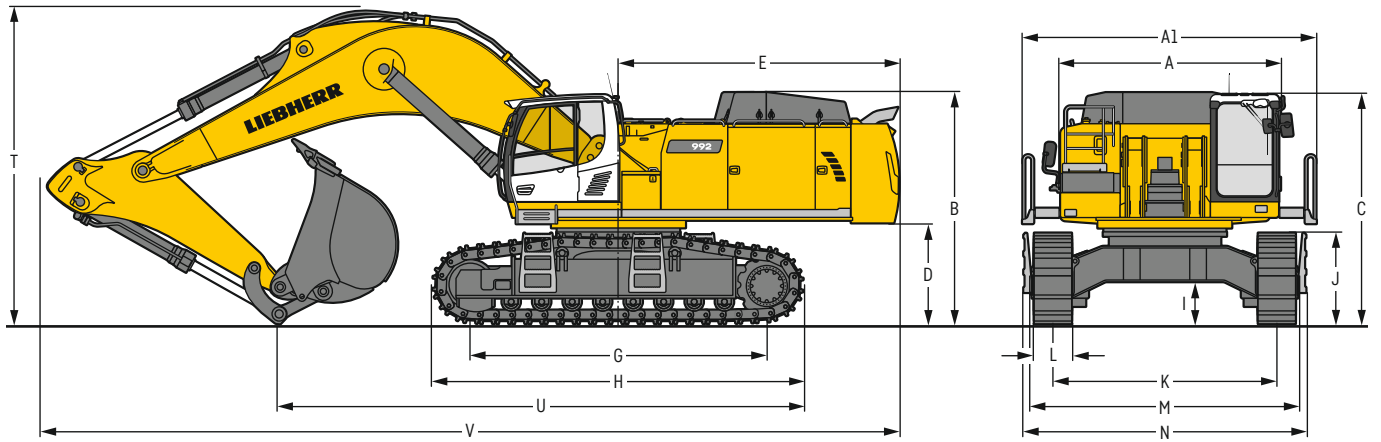

Undercarriage

Versions	
HD	Gauge 3,600 mm / 11'10"
LC-V	Gauge 3,590 mm / 11' 9"
Drive	Liebherr swashplate motor with brake valves on both sides
Transmission	Liebherr compact planetary reduction gear
Maximum travel speed	4.3 km/h / 2.7 mph
Drawbar pull on crawler	568 kN / 127,692 lbf
Track components	D9G, maintenance-free
Track rollers / Carrier rollers	8 / 2 (HD) 9 / 3 (LC-V)
Tracks	Sealed and greased
Track pads	Double grouser
Holding brake	Wet multi-disc (spring applied, pressure released)
Brake valves	Outside the travel motor
Lashing eyes	Integrated


Equipment

Type	Combination of resistant steel plates and cast steel components
Hydraulic cylinders	Liebherr cylinders with seal and guidance systems
Bearings	Sealed, low maintenance
Lubrication	Automatic central lubrication system (except link and tilt geometry)
Hydraulic connections	Pipes and hoses equipped with SAE split-flange connections
Buckets	Standard equipped with Liebherr tooth system

Dimensions



		HD			mm / ft in			LC-V			mm / ft in		
A	Uppercarriage width				3,565 / 11' 8"						3,565 / 11' 8"		
AI	Uppercarriage width with catwalks				4,730 / 15' 6"						4,730 / 15' 6"		
B	Uppercarriage height				3,725 / 12' 3"						3,865 / 12' 8"		
C	Cab height				3,695 / 12' 1"						3,835 / 12' 7"		
D	Counterweight ground clearance				1,620 / 5' 4"						1,755 / 5' 9"		
E	Rear-end length				4,515 / 14' 10"						4,515 / 14' 10"		
G	Wheelbase				4,770 / 15' 8"						5,160 / 16' 11"		
H	Undercarriage length				5,960 / 19' 7"						6,335 / 20' 9"		
I	Undercarriage ground clearance				690 / 2' 3"						950 / 3' 1"		
J	Track height				1,460 / 4' 9"						1,495 / 4' 11"		
K	Track gauge				3,600 / 11' 10"						2,750 / 3,590* / 9' / 11' 9"		
L	Track pad width	500 / 20"	600 / 24"	750 / 30"	500 / 20"	600 / 24"	750 / 30"	500 / 20"	600 / 24"	750 / 30"	500 / 20"	600 / 24"	750 / 30"
M	Width over tracks	4,380 / 14' 4"	4,380 / 14' 4"	4,380 / 14' 4"	3,490 / 4,330* / 11' 5" / 14' 2"	3,490 / 4,330* / 11' 5" / 14' 2"	3,490 / 4,330* / 11' 5" / 14' 2"	3,490 / 4,330* / 11' 5" / 14' 2"	3,490 / 4,330* / 11' 5" / 14' 2"	3,490 / 4,330* / 11' 5" / 14' 2"	3,500 / 4,340* / 11' 6" / 14' 3"	3,500 / 4,340* / 11' 6" / 14' 3"	3,500 / 4,340* / 11' 6" / 14' 3"
N	Width over steps	5,010 / 16' 5"	5,010 / 16' 5"	5,010 / 16' 5"	4,045 / 4,885* / 13' 3" / 16"	4,045 / 4,885* / 13' 3" / 16"	4,045 / 4,885* / 13' 3" / 16"	4,045 / 4,885* / 13' 3" / 16"	4,045 / 4,885* / 13' 3" / 16"	4,045 / 4,885* / 13' 3" / 16"	4,045 / 4,885* / 13' 3" / 16"	4,045 / 4,885* / 13' 3" / 16"	4,045 / 4,885* / 13' 3" / 16"

* work position

		Stick length m / ft in	Mono boom 7.20 m / 23' 7" direct mounting		Mono boom 8.60 m / 28' 3" direct mounting		Mono boom 10.50 m / 34' 5" direct mounting	
			HD	LC-V	HD	LC-V	HD	LC-V
T	Boom height	2.90 / 9' 6"	5,100 / 16' 9"	5,150 / 16' 11"	-	-	-	-
		3.30 / 10' 10"	5,250 / 17' 3"	5,350 / 17' 7"	5,450 / 17' 11"	5,500 / 18' 1"	-	-
		3.80 / 12' 6"	5,550 / 18' 3"	5,600 / 18' 4"	5,600 / 18' 4"	5,700 / 18' 8"	5,900 / 19' 4"	6,000 / 19' 8"
		4.70 / 15' 5"	6,050 / 19' 10"	6,150 / 20' 2"	6,000 / 19' 8"	6,000 / 19' 8"	6,100 / 20'	6,200 / 20' 4"
		5.80 / 19'	-	-	6,800 / 22' 4"	6,750 / 22' 2"	6,800 / 22' 4"	6,800 / 22' 4"
U	Length on ground	2.90 / 9' 6"	8,450 / 27' 9"	8,600 / 28' 3"	-	-	-	-
		3.30 / 10' 10"	8,200 / 26' 11"	8,350 / 27' 5"	9,950 / 32' 8"	10,100 / 33' 2"	-	-
		3.80 / 12' 6"	8,100 / 26' 7"	8,200 / 26' 11"	9,850 / 32' 4"	10,000 / 32' 10"	11,900 / 39' 1"	12,050 / 39' 6"
		4.70 / 15' 5"	7,950 / 26' 1"	8,050 / 26' 5"	9,650 / 31' 8"	9,800 / 32' 2"	11,700 / 38' 5"	11,850 / 39' 11"
		5.80 / 19'	-	-	9,650 / 31' 8"	9,750 / 32'	11,550 / 37' 11"	11,700 / 38' 5"
V	Overall length	2.90 / 9' 6"	13,800 / 45' 3"	13,800 / 45' 3"	-	-	-	-
		3.30 / 10' 10"	13,500 / 44' 3"	13,500 / 44' 3"	14,900 / 48' 11"	14,900 / 48' 11"	-	-
		3.80 / 12' 6"	13,400 / 44'	13,450 / 44' 2"	14,750 / 48' 5"	14,750 / 48' 5"	16,650 / 54' 8"	16,650 / 54' 8"
		4.70 / 15' 5"	13,150 / 43' 2"	13,250 / 43' 6"	14,550 / 47' 9"	14,550 / 47' 9"	16,450 / 54'	16,500 / 54' 2"
		5.80 / 19'	-	-	14,150 / 46' 5"	14,250 / 46' 9"	16,150 / 53'	16,250 / 53' 4"
Bucket		5.20 m ³ / 6.80 yd ³		3.60 m ³ / 4.71 yd ³		2.60 m ³ / 3.40 yd ³		

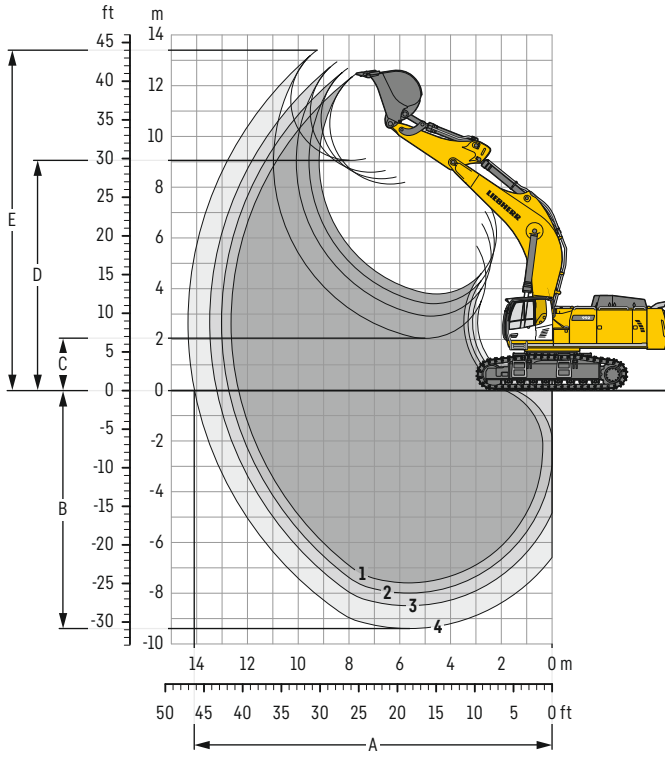
Transport dimensions

removable elements disassembled

		Mono boom 7.20 m / 23' 7"		Mono boom 8.60 m / 28' 3"		Mono boom 10.50 m / 34' 5"	
		HD	LC-V	HD	LC-V	HD	LC-V
Transport width		4,730 / 15' 6"		4,730 / 15' 6"		4,730 / 15' 6"	
Transport length	Undercarriage / Stick m / ft in	mm / ft in		mm / ft in		mm / ft in	
	2.90 / 9' 6"	13,800 / 45' 3"	13,800 / 45' 3"	-	-	-	-
	3.30 / 10' 10"	13,500 / 44' 3"	13,500 / 44' 3"	14,900 / 48' 11"	14,900 / 48' 11"	-	-
	3.80 / 12' 6"	13,400 / 44'	13,450 / 44' 2"	14,750 / 48' 5"	14,750 / 48' 5"	16,650 / 54' 8"	16,650 / 54' 8"
	4.70 / 15' 5"	13,150 / 43' 2"	13,250 / 43' 6"	14,550 / 47' 9"	14,550 / 47' 9"	16,450 / 54'	16,500 / 54' 2"
Transport height	5.80 / 19'	-	-	14,150 / 46' 5"	14,250 / 46' 9"	16,150 / 53'	16,250 / 53' 4"
	2.90 / 9' 6"	5,100 / 16' 9"	5,150 / 16' 11"	-	-	-	-
	3.30 / 10' 10"	5,250 / 17' 3"	5,350 / 17' 7"	5,450 / 17' 11"	5,500 / 18' 1"	-	-
	3.80 / 12' 6"	5,550 / 18' 3"	5,600 / 18' 4"	5,600 / 18' 4"	5,700 / 18' 8"	5,900 / 19' 4"	6,000 / 19' 8"
	4.70 / 15' 5"	6,050 / 19' 10"	6,150 / 20' 2"	6,000 / 19' 8"	6,000 / 19' 8"	6,100 / 20'	6,200 / 20' 4"
5.80 / 19'	-	-	6,800 / 22' 4"	6,750 / 22' 2"	6,800 / 22' 4"	6,800 / 22' 4"	
Bucket		5.20 m ³ / 6.80 yd ³		3.60 m ³ / 4.71 yd ³		2.60 m ³ / 3.40 yd ³	

Backhoe bucket

with mono boom 7.20 m / 23'7"



Digging envelope

without quick coupler	1	2	3	4	
Stick length	m / ft in	2.90 / 9'6"	3.30 / 10'10"	3.80 / 12'6"	4.70 / 15'5"
A Max. reach at ground level	m / ft in	12.30 / 40'4"	12.70 / 41' 8"	13.20 / 43'4"	14.05 / 46'1"
B Max. digging depth	m / ft in	7.45 / 24'5"	7.85 / 25' 9"	8.35 / 27'5"	9.25 / 30'4"
C Min. dumping height	m / ft in	3.80 / 12'6"	3.40 / 11' 2"	2.90 / 9'6"	2.05 / 6'9"
D Max. dumping height	m / ft in	8.25 / 27'1"	8.50 / 27'11"	8.75 / 28'8"	9.20 / 30'2"
E Max. cutting height	m / ft in	12.60 / 41'4"	12.85 / 42' 2"	13.10 / 43'	13.55 / 44'5"

Forces

without quick coupler	1	2	3	4	
Stick digging force (ISO 6015)	kN / lbf	390 / 87,680	361 / 81,160	329 / 73,960	284 / 63,850
Bucket digging force (ISO 6015)	kN / lbf	485 / 109,030	485 / 109,030	485 / 109,030	485 / 109,030
Stick digging force (SAE J1179)	kN / lbf	374 / 84,080	347 / 78,010	317 / 71,270	276 / 62,050
Bucket digging force (SAE J1179)	kN / lbf	437 / 98,240	437 / 98,240	437 / 98,240	437 / 98,240

Operating weight and ground pressure

The operating weight includes the basic machine with counterweight 14.1t / 31,090 lb, mono boom 7.20 m / 23'7", stick 2.90 m / 9'6" and bucket 5.20 m³ / 6.80 yd³ (4,650 kg / 10,140 lb).

Undercarriage		HD		
Pad width	mm / in	500 / 20"	600 / 24"	750 / 30"
Weight	kg / lb	85,800 / 189,160	86,600 / 190,920	87,700 / 193,350
Ground pressure	kg/cm ² / psi	1.64 / 23.5	1.39 / 19.8	1.13 / 16.1

Undercarriage		LC-V		
Pad width	mm / in	500 / 20"	600 / 24"	750 / 30"
Weight	kg / lb	91,200 / 201,060	92,000 / 202,830	93,100 / 205,250
Ground pressure	kg/cm ² / psi	1.64 / 23.3	1.38 / 19.6	1.12 / 15.9

The operating weight includes the basic machine with counterweight 16.0t / 35,270 lb, mono boom 7.20 m / 23'7", stick 2.90 m / 9'6" and bucket 5.20 m³ / 6.80 yd³ (4,650 kg / 10,140 lb).

Undercarriage		HD		
Pad width	mm / in	500 / 20"	600 / 24"	750 / 30"
Weight	kg / lb	87,700 / 193,350	88,500 / 195,110	89,600 / 197,540
Ground pressure	kg/cm ² / psi	1.69 / 24.1	1.43 / 20.4	1.17 / 16.7

Undercarriage		LC-V		
Pad width	mm / in	500 / 20"	600 / 24"	750 / 30"
Weight	kg / lb	93,100 / 205,250	93,900 / 207,020	95,000 / 209,440
Ground pressure	kg/cm ² / psi	1.68 / 23.9	1.42 / 20.2	1.16 / 16.5

Buckets Machine stability per ISO 10567* (75% of tipping capacity)

	Cutting width mm ft in	Capacity ISO 7451 m ³ yd ³	Weight kg lb	HD undercarriage (with track pads 750 mm/30")				LC-V undercarriage (with track pads 750 mm/30")			
				Stick length (m/ft in)				Stick length (m/ft in)			
				2.90 9'6"	3.30 10'10"	3.80 12'6"	4.70 15'5"	2.90 9'6"	3.30 10'10"	3.80 12'6"	4.70 15'5"
with counterweight 14.1t/31,090 lb											
STD ¹⁾	2,200 7'3"	5.20 6.80	4,650 10,251	▲	▲	▲	▲	▲	▲	■	
	2,300 7'7"	5.60 7.32	4,850 10,692	▲	▲	■	■	▲	▲	▲	
	2,300 7'7"	6.20 8.11	5,050 11,133	■	■	▲	△	▲	■	■	
	2,500 8'2"	6.80 8.89	5,400 11,905	▲	▲	△	△	■	▲	△	
	2,200 7'3"	4.60 6.02	5,100 11,244	▲	▲	▲	■	▲	▲	■	
	2,200 7'3"	5.20 6.80	5,300 11,684	▲	▲	■	■	▲	▲	▲	
HD ²⁾	2,300 7'7"	5.60 7.32	5,550 12,236	▲	■	▲	△	▲	▲	■	
	2,300 7'7"	6.20 8.11	5,800 12,787	■	▲	■	△	▲	■	△	
	2,000 6'7"	4.20 5.49	5,600 12,346	▲	▲	▲	■	▲	▲	▲	
	2,200 7'3"	4.70 6.15	5,850 12,897	▲	▲	▲	▲	▲	▲	■	
HDV ³⁾	2,200 7'3"	5.20 6.80	6,250 13,779	▲	▲	■	△	▲	▲	■	
	2,300 7'7"	5.70 7.45	6,500 14,330	■	■	■	△	▲	■	△	
	2,200 7'3"	5.20 6.80	4,650 10,251	▲	▲	▲	■	▲	▲	■	
	2,300 7'7"	5.60 7.32	4,850 10,692	▲	▲	▲	▲	▲	▲	■	
STD ¹⁾	2,300 7'7"	6.20 8.11	5,050 11,133	▲	▲	■	■	▲	▲	■	
	2,500 8'2"	6.80 8.89	5,400 11,905	■	■	■	△	▲	■	△	
	2,200 7'3"	4.60 6.02	5,100 11,244	▲	▲	▲	▲	▲	▲	▲	
	2,200 7'3"	5.20 6.80	5,300 11,684	▲	▲	▲	▲	▲	▲	■	
	2,300 7'7"	5.60 7.32	5,550 12,236	▲	▲	■	■	▲	▲	▲	
	2,300 7'7"	6.20 8.11	5,800 12,787	▲	■	▲	△	▲	▲	■	
HD ²⁾	2,000 6'7"	4.20 5.49	5,600 12,346	▲	▲	▲	▲	▲	▲	▲	
	2,200 7'3"	4.70 6.15	5,850 12,897	▲	▲	▲	■	▲	▲	■	
	2,200 7'3"	5.20 6.80	6,250 13,779	▲	▲	▲	■	▲	▲	▲	
	2,300 7'7"	5.70 7.45	6,500 14,330	▲	■	▲	△	▲	■	■	

* Indicated loads are based on ISO 10567, at maximum reach, and may be swung 360° on firm and even ground

¹⁾ Standard bucket with Liebherr teeth Z 70

²⁾ HD bucket with Liebherr teeth Z 90

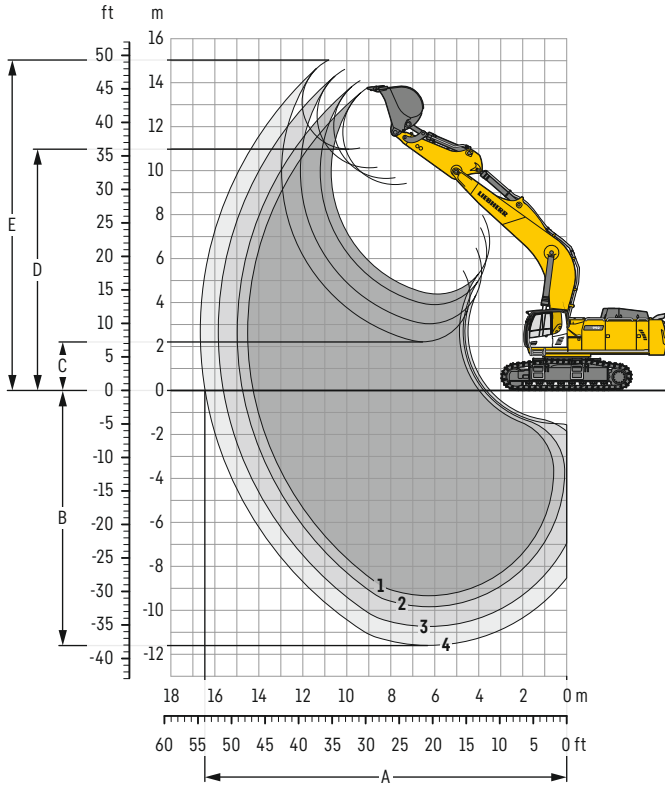
³⁾ HDV bucket with Liebherr teeth Z 90

Other buckets available upon request

Max. material weight ▲ = ≤ 2.0 t/m³/3,400 lb/yd³, ■ = ≤ 1.8 t/m³/3,000 lb/yd³, ▲ = ≤ 1.65 t/m³/2,800 lb/yd³, ■ = ≤ 1.5 t/m³/2,500 lb/yd³, △ = ≤ 1.2 t/m³/2,000 lb/yd³

Backhoe bucket

with mono boom 8.60 m / 28'3"



Digging envelope

without quick coupler		1	2	3	4
Stick length	m / ft in	3.30 / 10'10"	3.80 / 12' 6"	4.70 / 15' 5"	5.80 / 19'
A Max. reach at ground level	m / ft in	14.20 / 46' 7"	14.70 / 48' 3"	15.60 / 51' 2"	16.40 / 53'10"
B Max. digging depth	m / ft in	9.20 / 30' 2"	9.70 / 31'10"	10.60 / 34' 9"	11.45 / 37' 7"
C Min. dumping height	m / ft in	4.40 / 14' 5"	3.90 / 12'10"	3.05 / 10'	2.20 / 7' 3"
D Max. dumping height	m / ft in	9.50 / 31' 2"	9.80 / 32' 2"	10.30 / 33'10"	11.10 / 36' 5"
E Max. cutting height	m / ft in	13.90 / 45' 7"	14.20 / 46' 7"	14.75 / 48' 5"	15.15 / 49' 8"

Forces

without quick coupler		1	2	3	4
Stick digging force (ISO 6015)	kN / lbf	361 / 81,160	329 / 73,960	284 / 63,850	249 / 55,980
Bucket digging force (ISO 6015)	kN / lbf	485 / 109,030	485 / 109,030	485 / 109,030	356 / 80,030
Stick digging force (SAE J1179)	kN / lbf	347 / 78,010	317 / 71,270	276 / 62,050	237 / 53,280
Bucket digging force (SAE J1179)	kN / lbf	437 / 98,240	437 / 98,240	437 / 98,240	315 / 70,820

Operating weight and ground pressure

The operating weight includes the basic machine with counterweight 14.1t / 31,090 lb, mono boom 8.60 m / 28'3", stick 3.80 / 12'6" and bucket 3.60 m³ / 4.71 yd³ (3,900 kg / 8,600 lb).

Undercarriage		HD		
Pad width	mm / in	500 / 20"	600 / 24"	750 / 30"
Weight	kg / lb	86,400 / 190,480	87,100 / 192,020	88,200 / 194,450
Ground pressure	kg/cm ² / psi	1.67 / 23.8	1.40 / 19.9	1.14 / 16.2

Undercarriage		LC-V		
Pad width	mm / in	500 / 20"	600 / 24"	750 / 30"
Weight	kg / lb	91,700 / 202,160	92,500 / 203,930	93,600 / 206,350
Ground pressure	kg/cm ² / psi	1.65 / 23.5	1.39 / 19.8	1.12 / 15.9

The operating weight includes the basic machine with counterweight 16.0t / 35,270 lb, mono boom 8.60 m / 28'3", stick 3.80 / 12'6" and bucket 3.60 m³ / 4.71 yd³ (3,900 kg / 8,600 lb).

Undercarriage		HD		
Pad width	mm / in	500 / 20"	600 / 24"	750 / 30"
Weight	kg / lb	88,300 / 194,670	89,000 / 196,210	90,100 / 198,640
Ground pressure	kg/cm ² / psi	1.71 / 24.4	1.44 / 20.5	1.18 / 16.8

Undercarriage		LC-V		
Pad width	mm / in	500 / 20"	600 / 24"	750 / 30"
Weight	kg / lb	93,600 / 206,350	94,400 / 208,120	95,500 / 210,540
Ground pressure	kg/cm ² / psi	1.69 / 24.1	1.43 / 20.4	1.16 / 16.5

Buckets Machine stability per ISO 10567* (75% of tipping capacity)

	Cutting width mm ft in	Capacity ISO 7451 m³ yd³	Weight kg lb	HD undercarriage (with track pads 750 mm/30")				LC-V undercarriage (with track pads 750 mm/30")			
				Stick length (m / ft in)				Stick length (m / ft in)			
				3.30 10'10"	3.80 12'6"	4.70 15'5"	5.80 19'	3.30 10'10"	3.80 12'6"	4.70 15'5"	5.80 19'
with counterweight 14.1t/31,090 lb											
STD ¹⁾	2,300 7'7"	5.60 7.32	4,850 10,690	△	△	-	-	■	△	-	-
	2,300 7'7"	6.20 8.11	5,050 11,130	△	-	-	-	△	△	-	-
	2,500 8'2"	6.80 8.89	5,400 11,910	-	-	-	-	△	-	-	-
HD ²⁾	2,200 7'3"	5.20 6.80	5,300 11,680	△	△	-	-	■	△	-	-
	2,300 7'7"	5.60 7.32	5,550 12,240	△	-	-	-	△	△	-	-
	2,300 7'7"	6.20 8.11	5,800 12,790	-	-	-	-	△	-	-	-
HDV ³⁾	2,200 7'3"	4.70 6.15	5,850 12,900	■	△	-	-	▲	△	△	-
	2,200 7'3"	5.20 6.80	6,250 13,780	△	-	-	-	△	△	-	-
	2,300 7'7"	5.70 7.45	6,500 14,330	-	-	-	-	△	-	-	-
STD ⁴⁾	1,950 6'5"	4.00 5.23	3,600 7,940	-	-	-	△	-	-	-	■
	2,150 7'1"	4.50 5.88	3,800 8,380	-	-	-	△	-	-	-	△
	2,250 7'5"	5.00 6.54	3,950 8,710	-	-	-	-	-	-	-	△
HD ⁵⁾	2,000 6'7"	4.00 5.23	4,500 9,920	-	-	-	△	-	-	-	△
	2,200 7'3"	4.50 5.88	4,850 10,690	-	-	-	-	-	-	-	△
with counterweight 16.0t/35,270 lb											
STD ¹⁾	2,300 7'7"	5.60 7.32	4,850 10,690	■	△	-	-	▲	■	△	-
	2,300 7'7"	6.20 8.11	5,050 11,130	△	△	-	-	■	△	-	-
	2,500 8'2"	6.80 8.89	5,400 11,910	△	-	-	-	△	△	-	-
HD ²⁾	2,200 7'3"	5.20 6.80	5,300 11,680	■	△	△	-	▲	■	△	-
	2,300 7'7"	5.60 7.32	5,550 12,240	△	△	-	-	■	△	△	-
	2,300 7'7"	6.20 8.11	5,800 12,790	△	-	-	-	△	△	-	-
HDV ³⁾	2,200 7'3"	4.70 6.15	5,850 12,900	▲	■	△	-	■	▲	△	-
	2,200 7'3"	5.20 6.80	6,250 13,780	△	△	-	-	■	△	-	-
	2,300 7'7"	5.70 7.45	6,500 14,330	△	-	-	-	△	△	-	-
STD ⁴⁾	2,150 7'1"	4.50 5.88	3,800 8,380	-	-	-	△	-	-	-	■
	2,250 7'5"	5.00 6.54	3,950 8,710	-	-	-	△	-	-	-	△
	2,450 8'	5.50 7.19	4,200 9,260	-	-	-	-	-	-	-	△
HD ⁵⁾	2,000 6'7"	4.00 5.23	4,500 9,920	-	-	-	■	-	-	-	■
	2,200 7'3"	4.50 5.88	4,850 10,690	-	-	-	△	-	-	-	△
	2,300 7'7"	5.00 6.54	5,050 11,130	-	-	-	-	-	-	-	△

* Indicated loads are based on ISO 10567, at maximum reach, and may be swung 360° on firm and even ground

¹⁾ Standard bucket with Liebherr teeth Z 90

²⁾ HD bucket with Liebherr teeth Z 90

³⁾ HDV bucket with Liebherr teeth Z 90

⁴⁾ Standard bucket from R 966 Litronic with Liebherr teeth Z 70

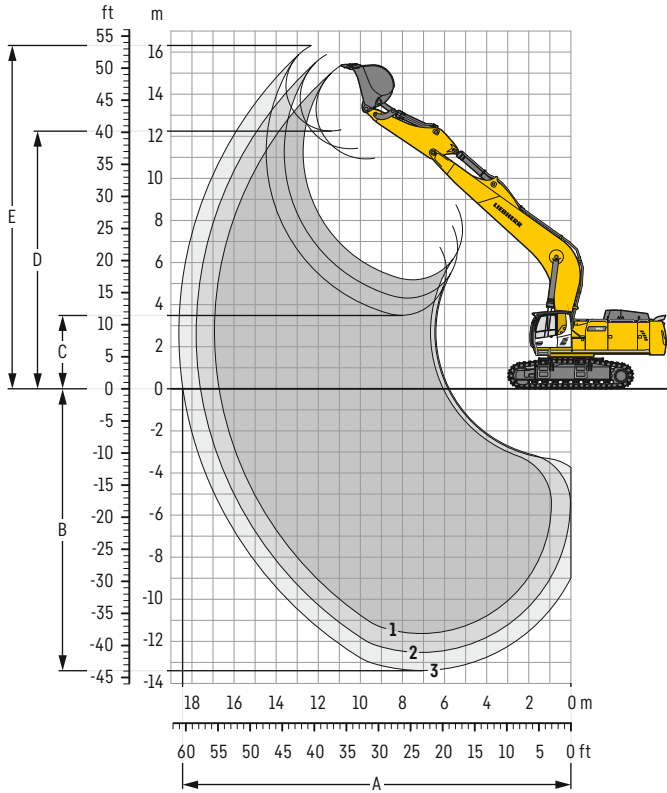
⁵⁾ HD bucket from R 966 Litronic with Liebherr teeth Z 90

Other buckets available upon request

Max. material weight ■ = ≤ 1.8t/m³/3,000lb/yd³, ▲ = ≤ 1.65t/m³/2,800lb/yd³, ■ = ≤ 1.5t/m³/2,500lb/yd³, △ = ≤ 1.2t/m³/2,000lb/yd³, - = not authorized

Backhoe bucket

with mono boom 10.50 m / 34'5"



Digging envelope

without quick coupler		1	2	3
Stick length	m / ft in	3.80 / 12' 6"	4.70 / 15' 5"	5.80 / 19'
A Max. reach at ground level	m / ft in	16.70 / 54' 9"	17.55 / 57' 7"	18.40 / 60' 4"
B Max. digging depth	m / ft in	11.50 / 37' 9"	12.40 / 40' 8"	13.25 / 43' 6"
C Min. dumping height	m / ft in	5.20 / 17' 1"	4.30 / 14' 1"	3.50 / 11' 6"
D Max. dumping height	m / ft in	11.05 / 36' 3"	11.55 / 37' 11"	12.40 / 40' 8"
E Max. cutting height	m / ft in	15.50 / 50' 10"	16.00 / 52' 6"	16.45 / 54'

Forces

without quick coupler		1	2	3
Stick digging force (ISO 6015)	kN / lbf	329 / 73,960	284 / 63,850	249 / 55,980
Bucket digging force (ISO 6015)	kN / lbf	485 / 109,030	485 / 109,030	356 / 80,030
Stick digging force (SAE J1179)	kN / lbf	317 / 71,270	276 / 62,050	237 / 53,280
Bucket digging force (SAE J1179)	kN / lbf	437 / 98,240	437 / 98,240	315 / 70,820

Operating weight and ground pressure

The operating weight includes the basic machine with counterweight 16.0t / 35,270 lb, mono boom 10.50 m / 34'5", stick 4.70 m / 15'5" and bucket 2.60m³ / 3.40 yd³ (3,400 kg / 7,500 lb).

Undercarriage		HD		
Pad width	mm / in	500 / 20"	600 / 24"	750 / 30"
Weight	kg / lb	89,200 / 196,650	90,000 / 198,420	91,100 / 200,840
Ground pressure	kg/cm ² / psi	1.72 / 24.5	1.44 / 20.5	1.17 / 16.6

Undercarriage		LC-V		
Pad width	mm / in	500 / 20"	600 / 24"	750 / 30"
Weight	kg / lb	94,600 / 208,560	95,400 / 210,320	96,500 / 212,750
Ground pressure	kg/cm ² / psi	1.70 / 24.2	1.42 / 20.2	1.15 / 16.4

Buckets Machine stability per ISO 10567* (75% of tipping capacity)

	Cutting width	Capacity ISO 7451	Weight	HD undercarriage (with track pads 750 mm / 30")			LC-V undercarriage (with track pads 750 mm / 30")		
				Stick length (m / ft in)			Stick length (m / ft in)		
				3.80 12'6"	4.70 15'5"	5.80 19'	3.80 12'6"	4.70 15'5"	5.80 19'
with counterweight 16.0t / 35,270 lb									
STD ¹⁾	1,450 4'9"	2.60 3.40	3,400 7,500	▲	▲	-	▲	■	-
	1,800 5'11"	3.60 4.71	3,900 8,600	△	-	-	■	△	-
	2,000 6'7"	4.10 5.36	4,100 9,040	△	-	-	△	-	-
HD ²⁾	1,450 4'9"	2.60 3.40	3,750 8,270	▲	▲	-	▲	■	-
	1,800 5'11"	3.60 4.71	4,350 9,590	△	-	-	■	△	-
	2,000 6'7"	4.10 5.36	4,700 10,360	-	-	-	△	-	-
HDV ³⁾	1,800 5'11"	3.70 4.84	5,200 11,460	-	-	-	△	-	-
	1,400 4'7"	2.00 2.62	2,500 5,510	-	-	▲	-	-	▲
STD ⁴⁾	1,700 5'7"	2.50 3.27	2,850 6,280	-	-	■	-	-	▲
	1,950 6'5"	3.00 3.92	3,100 6,830	-	-	△	-	-	■
	2,150 7'1"	3.50 4.58	3,350 7,390	-	-	△	-	-	△
HD ⁵⁾	1,450 4'9"	2.00 2.62	3,100 6,830	-	-	▲	-	-	▲
	1,750 5'9"	2.50 3.27	3,600 7,940	-	-	■	-	-	▲
	2,000 6'7"	3.00 3.92	3,900 8,600	-	-	△	-	-	△

* Indicated loads are based on ISO 10567, at maximum reach, and may be swung 360° on firm and even ground

¹⁾ Standard bucket with Liebherr teeth Z 90

²⁾ HD bucket with Liebherr teeth Z 90

³⁾ HDV bucket with Liebherr teeth Z 90

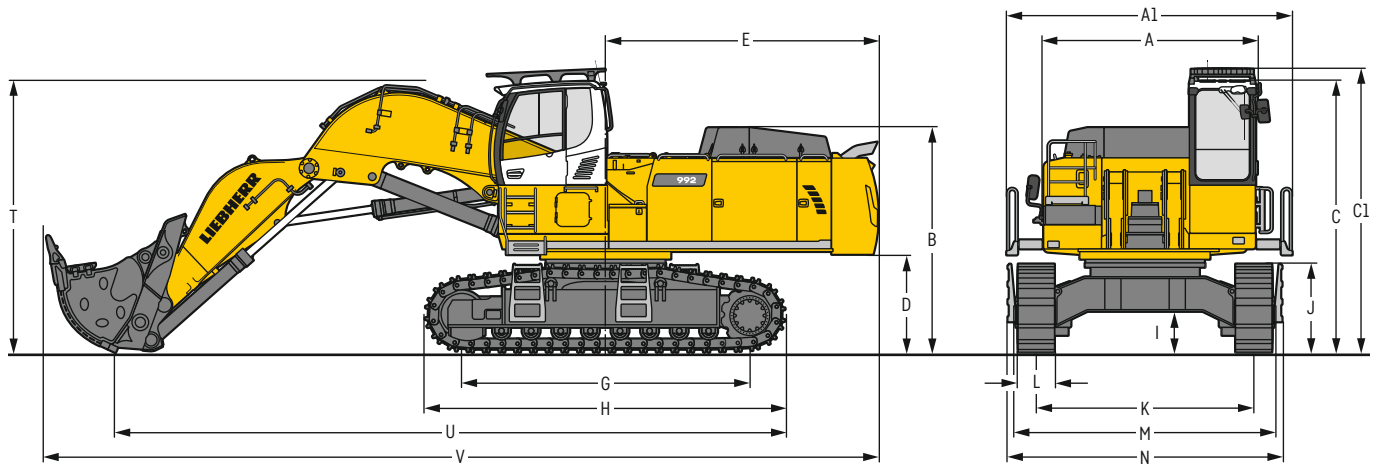
⁴⁾ Standard bucket from R 966 Litronic with Liebherr teeth Z 70

⁵⁾ HD bucket from R 966 Litronic with Liebherr teeth Z 90

Other buckets available upon request

Max. material weight ▲ = ≤ 2.0t/m³ / 3,400 lb/yd³, ■ = ≤ 1.8t/m³ / 3,000 lb/yd³, ▲ = ≤ 1.65t/m³ / 2,800 lb/yd³, ■ = ≤ 1.5t/m³ / 2,500 lb/yd³, △ = ≤ 1.2t/m³ / 2,000 lb/yd³, - = not authorized

Dimensions front shovel



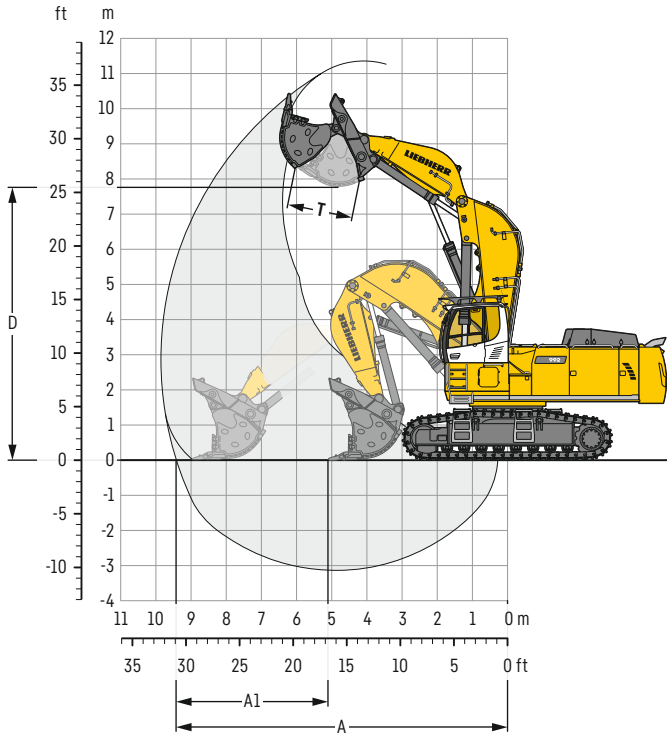
	HD	mm / ft in		HD	mm / ft in
A	Uppercarriage width	3,565 / 11' 8"	I	Undercarriage ground clearance	690 / 2' 3"
A1	Uppercarriage width with catwalks	4,730 / 15' 6"	J	Track height	1,460 / 4' 9"
B	Uppercarriage height	3,725 / 12' 3"	K	Track gauge	3,600 / 11' 10"
C	Cab height	4,495 / 14' 9"	L	Track pad width	500 / 20" 600 / 24" 750 / 30"
C1	Cab height with FOPS top guard	4,690 / 15' 5"	M	Width over tracks	4,380 / 14' 4" 4,380 / 14' 4" 4,380 / 14' 4"
D	Counterweight ground clearance	1,620 / 5' 4"	N	Width over steps	5,010 / 16' 5" 5,010 / 16' 5" 5,010 / 16' 5"
E	Rear-end length	4,515 / 14' 10"	T	Boom height	4,500 / 14' 9"
G	Wheelbase	4,770 / 15' 8"	U	Length on ground	11,100 / 36' 5"
H	Undercarriage length	5,960 / 19' 7"	V	Overall length	13,850 / 45' 5"

Transport dimensions

removable elements disassembled

	Shovel equipment
	mm / ft in
Transport width	4,730 / 15' 6"
Transport length	13,850 / 45' 5"
Transport height	4,690 / 15' 5"
Shovel	5.10 m ³ / 6.67 yd ³

Front shovel



Digging envelope

A	Max. reach at ground level	m / ft in	9.40 / 30'10"
A1	Max. crowd length	m / ft in	3.90 / 12'10"
D	Max. dumping height	m / ft in	7.80 / 25' 7"
T	Bucket opening width	mm / ft in	1,825 / 6'

Forces

Max. crowd force	kn / lbf	690 / 155,120
Max. crowd force at ground level	kn / lbf	490 / 110,160
Max. breakout force	kn / lbf	500 / 112,410

Operating weight and ground pressure

The operating weight includes the basic machine with cab elevation 800 mm / 27", shovel equipment and front shovel 5.10 m³ / 6.67 yd³ (9,200 kg / 20,280 lb), level II.

Undercarriage	HD			
Pad width	mm / in	500 / 20"	600 / 24"	750 / 30"
Weight	kg / lb	91,500 / 201,720	92,200 / 203,270	93,300 / 205,690
Ground pressure	kg/cm ² / psi	1.76 / 25.0	1.48 / 21.1	1.20 / 17.1

Front shovels

Cutting width	Capacity ISO 7451	Weight	Wear kit level		
				HD undercarriage	Shovel equipment
mm	m ³	kg			
ft in	yd ³	lb			
2,700	5.10	8,450	I	▲	
8'10"	6.67	18,630			
2,700	5.10	9,200	II	▲	
8'10"	6.67	20,280			
2,700	5.10	10,150	III	■	
8'10"	6.67	22,380			
2,700	5.40	10,600	III	■	
8'10"	7.06	23,370			
2,700	5.60	8,750	I	■	
8'10"	7.32	19,290			
2,700	5.60	9,500	II	■	
8'10"	7.32	20,940			
2,700	6.00	9,950	I	▲	
8'10"	7.85	21,940			
2,700	6.00	10,700	II	■	
8'10"	7.85	23,590			

Level I: For non-abrasive materials, such as limestone without flint inclusion, shot material or easily breakable rock, i.e., deteriorated rock, soft limestone, shale, etc.

Level II: For pre-blasted heavy rock, or deteriorated, cracked material (classification 3 to 4, according to DIN 18300)

Level III: For highly-abrasive materials such as rock with a high silica content, sandstone etc.

Max. material weight ▲ = ≤ 2.0 t/m³ / 3,400 lb/yd³, ■ = ≤ 1.8 t/m³ / 3,000 lb/yd³, ▲ = ≤ 1.65 t/m³ / 2,800 lb/yd³, ■ = ≤ 1.5 t/m³ / 2,500 lb/yd³

Lift capacities

with mono boom 7.20 m / 23'7", counterweight 14.1 t / 31,090 lb and track pads 750 mm / 30"

Stick 2.90 m / 9'6"

Under-carriage	3.0m 10ft		4.5m 15ft		6.0m 20ft		7.5m 25ft		9.0m 30ft		10.5m 35ft		m ft in		
10.5m t													23.7*	23.7*	6.4
35ft lb															
9.0m t							21.6*	21.6*					21.3*	21.3*	8.0
30ft lb							48.6*	48.6*					47.3*	47.3*	25.8*
7.5m t							21.8*	21.8*	19.5	20.3*			19.4	20.2*	9.0
25ft lb							48.3*	48.3*					44.1	44.7*	29.4*
6.0m t							23.2*	23.2*	19.2	20.9*			16.9	19.9*	9.7
20ft lb							51.2*	51.2*	41.9	46.6*			38.0	43.9*	31.8*
4.5m t							31.3*	31.3*	24.6	25.2*	18.6	21.8*	15.4	19.9	10.1
15ft lb							68.6*	68.6*	53.8	55.5*	40.7	48.3*	34.7	44.5*	33.1*
3.0m t							32.1	34.9*	23.3	27.1*	17.9	22.8*	14.7	19.0	10.3
10ft lb							70.4	76.5*	51.1	59.7*	39.2	50.3*	32.9	42.5	33.8*
1.5m t							30.7	36.6*	22.3	28.4*	17.3	22.7	14.5	18.9	10.2
5ft lb							67.2	80.5*	49.0	62.5*	38.0	49.5	32.5	42.2	33.6*
0m t							30.0	36.4*	21.7	28.6*	16.9	22.3	14.9	19.5	9.9
0ft lb							65.6	80.2*	47.7	63.0*	37.2	48.6	33.4	43.5	32.6*
-1.5m t			38.5*	38.5*	29.9	34.6*	21.5	27.6*	16.9	22.0*			16.1	20.7*	9.3
-5ft lb			88.7*	88.7*	65.2	76.2*	47.2	60.6*	37.0	48.1*			36.1	46.5*	30.7*
-3.0m t	40.5*	40.5*	38.4*	38.4*	30.2	30.9*	21.8	24.6*					18.6	20.4*	8.5
-10ft lb	91.9*	91.9*	84.5*	84.5*	65.8	67.9*	47.6	53.6*					41.8	45.6*	27.7*
-4.5m t			30.0*	30.0*	24.2*	24.2*							18.9*	18.9*	7.1
-15ft lb			65.4*	65.4*	52.4*	52.4*							42.0*	42.0*	23.2*
-6.0m t															
-20ft lb															

Stick 3.30 m / 10'10"

Under-carriage	3.0m 10ft		4.5m 15ft		6.0m 20ft		7.5m 25ft		9.0m 30ft		10.5m 35ft		m ft in		
10.5m t													20.1*	20.1*	7.0
35ft lb													45.1*	45.1*	22.4*
9.0m t								20.3*	20.3*				18.2*	18.2*	8.4
30ft lb								45.4*	45.4*				40.4*	40.4*	27.4*
7.5m t								20.7*	20.7*	19.7*	19.7*		17.3*	17.3*	9.4
25ft lb								45.9*	45.9*	42.9	44.0*		38.3*	38.3*	30.8*
6.0m t								25.9*	25.9*	22.3*	22.3*	19.4	15.9	17.1*	10.1
20ft lb								56.8*	56.8*	49.1*	49.1*	42.2	35.7*	37.7*	33*
4.5m t								30.1*	30.1*	24.4*	24.4*	18.7	14.6	17.3*	10.5
15ft lb								65.9*	65.9*	53.7*	53.7*	40.9	32.7	38.1*	34.4*
3.0m t								32.6	34.0*	23.5	26.5*	18.0	13.9	17.9*	10.6
10ft lb								71.4	74.4*	51.5	58.3*	39.4	31.1	39.5*	34.11*
1.5m t								31.0	36.3*	22.5	28.1*	17.3	13.7	17.9	10.6
5ft lb								67.8	79.6*	49.3	61.7*	38.0	30.7	39.8	34.8*
0m t								30.1	36.6*	21.8	28.6*	16.9	14.1	18.4	10.3
0ft lb								65.8	80.5*	47.7	62.9*	37.0	31.5	41.0	33.8*
-1.5m t								36.7*	36.7*	29.8	35.3*	21.5	15.1	19.8	9.7
-5ft lb								84.5*	84.5*	65.1	77.5*	47.0	33.8	44.1	31.11*
-3.0m t	36.6*	36.6*	40.8*	40.8*	30.0	32.2*	21.6	25.5*					17.2	19.8*	8.9
-10ft lb	82.8*	82.8*	89.6*	89.6*	65.4	70.5*	47.1	55.7*					38.5	44.2*	29.1*
-4.5m t			33.1*	33.1*	26.4*	26.4*	19.8*	19.8*					18.8*	18.8*	7.7
-15ft lb			72.2*	72.2*	57.3*	57.3*							41.9*	41.9*	25*
-6.0m t															
-20ft lb															

Height Can be slewed through 360° In longitudinal position of undercarriage Max. reach * Limited by hydr. capacity

The load values are quoted in tons (t) / lb x 1,000 at stick end (without bucket), and may be swung 360° on firm and even ground. Adjacent values are valid for the undercarriage when in the longitudinal position. Capacities are valid for 750 mm / 30" wide track pads. Indicated loads are based on ISO 10567 standard and do not exceed 75% of tipping or 87% of hydraulic capacity (indicated via *). Without bucket cylinder, link and lever the lift capacities will increase by 1,320 kg / 2,910 lb. Lifting capacity of the excavator is limited by machine stability and hydraulic capacity.

Determine maximum load lift from load lift chart displayed in the operator's cab or from load lift chart detailed in the operator's manual supplied with the machine.

Stick 3.80 m / 12'6"

Under-carriage	Height	3.0m	4.5m	6.0m	7.5m	9.0m	10.5m	Max. reach	m	
		10ft	15ft	20ft	25ft	30ft	35ft			ft in
10.5m t					18.2*	18.2*		16.7*	16.7*	7.7
35ft lb								37.4*	37.4*	24'8"
9.0m t						15.7*	15.7*	15.3*	15.3*	9.0
30ft lb								34.0*	34.0*	29'4"
7.5m t				19.4*	19.4*	18.5*	18.5*	14.6*	14.6*	10.0
25ft lb				43.0*	43.0*	41.2*	41.2*	32.4*	32.4*	32'6"
6.0m t				21.1*	21.1*	19.2*	19.2*	15.0	15.6*	10.6
20ft lb				46.5*	46.5*	42.5*	42.5*	31.9*	31.9*	34'7"
4.5m t			28.4*	28.4*	23.3*	23.3*	18.9	14.7	18.5*	11.0
15ft lb			62.3*	62.3*	51.3*	51.3*	41.3	32.0	40.3*	30.6
3.0m t			32.7*	32.7*	23.8	25.6*	18.1	14.3	18.5	11.1
10ft lb			71.5*	71.5*	52.1	56.4*	39.6	31.2	40.2	29.2
1.5m t			31.3	35.5*	22.7	27.5*	17.4	13.9	18.0	11.0
5ft lb			68.6	78.0*	49.6	60.4*	38.1	28.7	35.4*	36'2"
0m t			30.2	36.6*	21.9	28.4*	16.9	13.6	17.7	10.8
0ft lb			66.1	80.3*	47.9	62.4*	37.0	29.3	38.2	35'4"
-1.5m t			34.9*	34.9*	29.8	35.8*	21.4	16.6	21.9	10.3
-5ft lb			80.1*	80.1*	64.9	78.7*	46.9	36.3	47.8	31.2
-3.0m t		32.7*	32.7*	43.2*	43.2*	29.8	33.4*	21.4	26.4*	15.6
-10ft lb		73.9*	73.9*	94.9*	94.9*	64.9	73.2*	46.7	57.8*	35.0
-4.5m t		47.5*	47.5*	36.5*	36.5*	28.6*	28.6*	21.8	22.3*	18.5*
-15ft lb		103.7*	103.7*	79.6*	79.6*	62.3*	62.3*	47.5	48.0*	41.2*
-6.0m t				19.5*	19.5*			17.0*	17.0*	6.5
-20ft lb								42.9*	42.9*	19'2"
10.5m t				18.9*	18.9*			16.5*	16.5*	7.7
35ft lb								37.0*	37.0*	24'8"
9.0m t						16.5*	16.5*	15.2*	15.2*	9.0
30ft lb								33.8*	33.8*	29'4"
7.5m t				19.5*	19.5*	18.5*	18.5*	14.6*	14.6*	10.0
25ft lb				43.2*	43.2*	41.2*	41.2*	32.3*	32.3*	32'6"
6.0m t				21.2*	21.2*	19.3*	19.3*	14.4*	14.4*	10.6
20ft lb				46.9*	46.9*	42.7*	42.7*	31.9*	31.9*	34'7"
4.5m t			28.8*	28.8*	23.5*	23.5*	19.7	15.4	18.6*	11.0
15ft lb			63.1*	63.1*	51.8*	51.8*	43.1	33.6	41.0*	32.0
3.0m t			33.0*	33.0*	24.9	25.8*	19.0	15.0	19.2*	11.1
10ft lb			72.2*	72.2*	54.4	56.8*	41.5	32.7	42.4*	30.7
1.5m t			32.7	35.7*	23.7	27.6*	18.3	14.6	19.6*	11.0
5ft lb			71.6	78.3*	51.9	60.7*	40.0	31.9	43.1*	30.3
0m t			31.7	36.6*	22.9	28.4*	17.8	14.3	19.4*	13.9
0ft lb			69.2	80.3*	50.2	62.5*	38.9	31.3	42.5*	31.1
-1.5m t			36.1*	36.1*	31.3	35.7*	22.6	17.5	22.7*	14.8
-5ft lb			82.7*	82.7*	68.2	78.4*	49.3	38.3	49.8*	33.2
-3.0m t		33.9*	33.9*	42.8*	42.8*	31.3	33.1*	22.5	26.2*	17.6
-10ft lb		76.7*	76.7*	93.8*	93.8*	68.2	72.5*	49.2	57.2*	38.5
-4.5m t		46.4*	46.4*	35.7*	35.7*	28.1*	28.1*	21.7*	21.7*	18.4*
-15ft lb		101.2*	101.2*	77.9*	77.9*	61.1*	61.1*	46.6*	46.6*	41.0*
-6.0m t										
-20ft lb										

Stick 4.70 m / 15'5"

Under-carriage	Height	3.0m	4.5m	6.0m	7.5m	9.0m	10.5m	Max. reach	m	
		10ft	15ft	20ft	25ft	30ft	35ft			ft in
10.5m t								12.5*	12.5*	8.9
35ft lb								28.0*	28.0*	28'8"
9.0m t						15.7*	15.7*	11.6*	11.6*	10.1
30ft lb								25.9*	25.9*	32'8"
7.5m t						16.3*	16.3*	13.9*	13.9*	10.9
25ft lb						36.6*	36.6*	28.0*	28.0*	35'7"
6.0m t						17.3*	17.3*	15.3	16.3*	11.0
20ft lb						40.4*	40.4*	38.6*	38.6*	37'6"
4.5m t				25.1*	25.1*	21.1*	21.1*	18.7*	18.7*	11.8
15ft lb				55.2*	55.2*	46.7*	46.7*	41.5*	41.5*	32.6
3.0m t				29.8*	29.8*	23.7*	23.7*	18.3	20.2*	14.3
10ft lb				65.5*	65.5*	52.5*	52.5*	40.3	44.8*	31.5
1.5m t				32.0	33.6*	23.0	26.0*	17.5	21.6*	13.8
5ft lb				70.3	73.9*	50.5	57.5*	38.5	47.8*	30.5
0m t				30.5	35.7*	21.9	27.5*	16.8	22.2	13.4
0ft lb				59.2*	59.2*	48.2	60.9*	37.1	48.6	29.6
-1.5m t		18.1*	18.1*	32.4*	32.4*	29.6	36.0*	21.3	28.0*	16.4
-5ft lb		40.9*	40.9*	74.3*	74.3*	65.0	79.5*	46.8	61.9*	36.1
-3.0m t		27.3*	27.3*	43.4*	43.4*	29.3	34.7*	21.0	27.2*	16.2
-10ft lb		61.9*	61.9*	99.6*	99.6*	64.2	76.5*	46.1	60.0*	35.7
-4.5m t		39.2*	39.2*	41.2*	41.2*	29.5	31.5*	21.1	24.7*	16.4
-15ft lb		89.1*	89.1*	90.5*	90.5*	64.6	69.1*	46.3	54.1*	36.1
-6.0m t		44.1*	44.1*	32.9*	32.9*	25.4*	25.4*	19.0*	19.0*	11.9
-20ft lb		95.7*	95.7*	71.3*	71.3*	54.9*	54.9*	40.2*	40.2*	37.1*
10.5m t								12.5*	12.5*	8.9
35ft lb								27.7*	27.7*	28'8"
9.0m t						15.8*	15.8*	11.5*	11.5*	10.1
30ft lb								25.7*	25.7*	32'8"
7.5m t						16.4*	16.4*	14.2*	14.2*	10.9
25ft lb						36.7*	36.7*	28.9*	28.9*	35'7"
6.0m t						17.4*	17.4*	16.0	16.4*	11.0
20ft lb						41.0*	41.0*	38.8*	38.8*	35.0
4.5m t				25.5*	25.5*	21.3*	21.3*	18.8*	18.8*	11.8
15ft lb				56.1*	56.1*	47.2*	47.2*	41.8*	41.8*	34.1
3.0m t				30.2*	30.2*	23.9*	23.9*	19.2	20.3*	15.1
10ft lb				66.4*	66.4*	52.9*	52.9*	42.1	45.1*	33.1
1.5m t				33.4	33.8*	24.0	26.2*	18.4	21.7*	14.6
5ft lb				73.2	74.5*	52.7	57.9*	40.4	48.1*	32.0
0m t				31.9	35.8*	23.0	27.6*	17.7	22.6*	14.1
0ft lb				60.1*	60.1*	70.0	78.9*	50.6	61.0*	31.2
-1.5m t		18.8*	18.8*	33.2*	33.2*	31.1	36.0*	22.4	28.0*	17.3
-5ft lb		42.6*	42.6*	76.1*	76.1*	68.2	79.4*	49.2	61.8*	38.0
-3.0m t		28.2*	28.2*	44.6*	44.6*	30.9	34.5*	22.1	27.1*	17.1
-10ft lb		63.9*	63.9*	101.4*	101.4*	67.6	76.0*	48.6	59.6*	37.7
-4.5m t		40.5*	40.5*	40.6*	40.6*	31.1*	31.1*	22.3	24.4*	17.3
-15ft lb		91.9*	91.9*	89.2*	89.2*	68.0	68.2*	48.9	53.3*	38.2
-6.0m t		42.7*	42.7*	31.9*	31.9*	24.6*	24.6*	18.2*	18.2*	11.6
-20ft lb										

Height
 Can be slewed through 360°
 In longitudinal position of undercarriage
 Max. reach
 * Limited by hydr. capacity

The load values are quoted in tons (t) / lb x 1,000 at stick end (without bucket), and may be swung 360° on firm and even ground. Adjacent values are valid for the undercarriage when in the longitudinal position. Capacities are valid for 750 mm / 30" wide track pads. Indicated loads are based on ISO 10567 standard and do not exceed 75% of tipping or 87% of hydraulic capacity (indicated via *). Without bucket cylinder, link and lever the lift capacities will increase by 1,320 kg / 2,910 lb. Lifting capacity of the excavator is limited by machine stability and hydraulic capacity.

Determine maximum load lift from load lift chart displayed in the operator's cab or from load lift chart detailed in the operator's manual supplied with the machine.

Lift capacities

with mono boom 7.20 m / 23'7", counterweight 16.0 t / 35,270 lb and track pads 750 mm / 30"

Stick 2.90 m / 9'6"

Under-carriage	3.0m 10ft		4.5m 15ft		6.0m 20ft		7.5m 25ft		9.0m 30ft		10.5m 35ft		m ft in
10.5m t 35ft lb													23.7* 23.7* 6.4
9.0m t 30ft lb							21.6* 21.6*						21.3* 21.3* 8.0
7.5m t 25ft lb							21.8* 21.8*		20.3* 20.3*				20.2* 20.2* 9.0
6.0m t 20ft lb					27.2* 27.2*	23.2* 23.2*	20.4 20.9*						18.0 19.9* 9.7
4.5m t 15ft lb					31.3* 31.3*	25.2* 25.2*	19.8 21.8*						16.4 20.2* 10.1
3.0m t 10ft lb					34.2 34.9*	24.9 27.1*	19.1 22.8*						15.7 20.2 10.3
1.5m t 5ft lb					32.1 36.4*	23.3 28.6*	18.1 23.4*						16.0 20.7* 9.9
0m t 0ft lb					70.2 80.2*	51.0 63.0*	39.8 51.4*						35.8 46.2 32'6"
-1.5m t -5ft lb			38.5* 38.5*		32.0 34.6*	23.1 27.6*	18.1 22.0*						17.3 20.7* 9.3
-3.0m t -10ft lb		40.5* 40.5*	38.4* 38.4*		69.8 80.5*	51.2* 51.2*	40.6 51.7*						34.8 44.8 33'6"
-4.5m t -15ft lb		40.5* 40.5*	38.4* 38.4*		30.9* 30.9*	23.3 24.6*							16.0 20.7* 9.9
-6.0m t -20ft lb		40.5* 40.5*	38.4* 38.4*		30.9* 30.9*	23.3 24.6*							16.0 20.7* 9.9
10.5m t 35ft lb													23.4* 23.4* 6.4
9.0m t 30ft lb							21.5* 21.5*						21.1* 21.1* 8.0
7.5m t 25ft lb							21.8* 21.8*		20.7* 20.7*				20.1* 20.1* 9.0
6.0m t 20ft lb					27.6* 27.6*	23.3* 23.3*	21.0* 21.0*						18.6 19.9* 9.7
4.5m t 15ft lb					31.7* 31.7*	25.4* 25.4*	20.6 21.9*						17.1 20.2* 10.1
3.0m t 10ft lb					35.1* 35.1*	25.9 27.3*	20.0 22.9*						16.4 20.4* 10.3
1.5m t 5ft lb					34.2 36.7*	25.0 28.5*	19.4 23.5*						16.3 20.6* 10.2
0m t 0ft lb					74.8 80.6*	54.7 62.7*	42.5 51.7*						36.6 46.1* 33'6"
-1.5m t -5ft lb			40.3* 40.3*		33.5 34.4*	24.2 27.4*	19.0 21.8*						18.3 20.7* 9.3
-3.0m t -10ft lb		42.5* 42.5*	37.8* 37.8*		73.1 75.7*	53.0 60.2*	41.6 47.5*						41.0 46.4* 30'7"
-4.5m t -15ft lb		42.5* 42.5*	37.8* 37.8*		30.5* 30.5*	24.2* 24.2*							20.3* 20.3* 8.5
-6.0m t -20ft lb		42.5* 42.5*	37.8* 37.8*		29.0* 29.0*	23.4* 23.4*							18.6* 18.6* 7.1

Stick 3.30 m / 10'10"

Under-carriage	3.0m 10ft		4.5m 15ft		6.0m 20ft		7.5m 25ft		9.0m 30ft		10.5m 35ft		m ft in
10.5m t 35ft lb													20.1* 20.1* 7.0
9.0m t 30ft lb							20.3* 20.3*						18.2* 18.2* 8.4
7.5m t 25ft lb							20.7* 20.7*		19.7* 19.7*				17.3* 17.3* 9.4
6.0m t 20ft lb					25.9* 25.9*	22.3* 22.3*	20.1* 20.1*						16.9 17.1* 10.1
4.5m t 15ft lb					30.1* 30.1*	24.4* 24.4*	19.9 21.2*						15.6 17.3* 10.5
3.0m t 10ft lb					34.0* 34.0*	25.1 26.5*	19.2 22.3*				15.2 19.5		14.9 17.9* 10.6
1.5m t 5ft lb					32.2 36.6*	23.3 28.6*	18.1 23.4*				14.9 19.2		15.1 19.5 10.3
0m t 0ft lb					70.4 80.5*	51.1 62.9*	39.6 51.4*						33.8 43.6 33'8"
-1.5m t -5ft lb			36.7* 36.7*		32.0 35.3*	23.0 27.9*	17.9 22.5*						16.2 20.0* 9.7
-3.0m t -10ft lb		36.6* 36.6*	40.8* 40.8*		69.6 77.5*	50.3 61.3*	39.2 49.2*						36.2 44.6* 31'11"
-4.5m t -15ft lb		36.6* 36.6*	40.8* 40.8*		32.1 32.2*	23.1 25.5*							18.4 19.8* 8.9
-6.0m t -20ft lb		36.6* 36.6*	40.8* 40.8*		33.1* 33.1*	26.4* 26.4*	19.8* 19.8*						18.8* 18.8* 7.7
10.5m t 35ft lb													19.9* 19.9* 7.0
9.0m t 30ft lb							20.2* 20.2*						18.1* 18.1* 8.4
7.5m t 25ft lb							20.8* 20.8*		19.7* 19.7*				17.3* 17.3* 9.4
6.0m t 20ft lb					26.2* 26.2*	22.4* 22.4*	20.2* 20.2*						17.1* 17.1* 10.1
4.5m t 15ft lb					30.5* 30.5*	24.6* 24.6*	20.8 21.3*				16.2 17.3*		16.2 17.3* 10.5
3.0m t 10ft lb					34.3* 34.3*	26.1 26.7*	20.0 22.4*				15.9 19.7*		15.6 18.0* 10.6
1.5m t 5ft lb					34.5 36.4*	25.1 28.2*	19.4 23.2*				15.6 19.8*		15.5 19.2* 10.6
0m t 0ft lb					75.4 79.8*	54.9 61.9*	42.5 51.1*						34.6 42.4* 34'8"
-1.5m t -5ft lb			38.3* 38.3*		33.5 35.1*	24.2 27.8*	18.8 22.4*						17.2 20.0* 9.7
-3.0m t -10ft lb		38.1* 38.1*	40.2* 40.2*		72.9 77.1*	52.8 61.0*	41.2 48.9*						38.3 44.6* 31'11"
-4.5m t -15ft lb		38.1* 38.1*	40.2* 40.2*		31.8* 31.8*	24.3 25.2*							19.6 19.8* 8.9
-6.0m t -20ft lb		38.1* 38.1*	40.2* 40.2*		32.3* 32.3*	25.7* 25.7*	18.9* 18.9*						43.9 44.2* 29'1"

Height Can be slewed through 360° In longitudinal position of undercarriage Max. reach * Limited by hydr. capacity

The load values are quoted in tons (t) / lb x 1,000 at stick end (without bucket), and may be swung 360° on firm and even ground. Adjacent values are valid for the undercarriage when in the longitudinal position. Capacities are valid for 750 mm / 30" wide track pads. Indicated loads are based on ISO 10567 standard and do not exceed 75% of tipping or 87% of hydraulic capacity (indicated via *). Without bucket cylinder, link and lever the lift capacities will increase by 1,320 kg / 2,910 lb. Lifting capacity of the excavator is limited by machine stability and hydraulic capacity.

Determine maximum load lift from load lift chart displayed in the operator's cab or from load lift chart detailed in the operator's manual supplied with the machine.

Lift capacities

with mono boom 8.60 m / 28'3", counterweight 14.1 t / 31,090 lb and track pads 750 mm / 30"

Stick 3.30 m / 10'10"

Under-carriage	3.0m 10ft		4.5m 15ft		6.0m 20ft		7.5m 25ft		9.0m 30ft		10.5m 35ft		12.0m 40ft		13.5m 45ft		m ft in			
HD	12.0m t																			
	40ft lb																			
	10.5m t								16.3*	16.3*							16.4*	16.4*	9.1	
	35ft lb																36.6*	36.6*	29'5"	
	9.0m t								15.9*	15.9*								15.5*	15.8*	10.3
	30ft lb								35.1*	35.1*								34.9	35.2*	33'5"
	7.5m t						18.3*	18.3*	16.5*	16.5*	14.9	15.6*						13.3	15.5*	11.1
	25ft lb						39.8*	39.8*	36.2*	36.2*	31.9	34.5*						29.8	34.5*	36'2"
	6.0m t						20.4*	20.4*	17.6*	17.6*	14.5	16.0*						12.0	15.5*	11.6
	20ft lb						44.3*	44.3*	38.5*	38.5*	31.2	35.2*						26.7	34.4*	38'1"
4.5m t						22.8*	22.8*	17.6	19.0*	13.9	16.7*						11.1	14.6	12.0	
15ft lb						49.5*	49.5*	38.2	41.5*	30.2	36.7*						24.8	32.4	39'4"	
3.0m t						21.5	24.9*	16.7	20.3*	13.4	17.5*	10.9	14.3				10.7	14.0	12.1	
10ft lb						46.7	54.1*	36.3	44.3*	29.0	38.0						23.7	31.1	39'10"	
1.5m t						20.5	26.3*	16.0	21.3*	12.9	17.1	10.6	14.0				10.5	13.9	12.1	
5ft lb						44.5	57.2*	34.8	46.2	28.0	37.0						23.4	30.9	39'7"	
0m t						19.9	26.7*	15.5	20.8	12.6	16.7						10.7	14.2	11.8	
0ft lb						43.3	58.4*	33.8	45.1	27.4	36.3						23.8	31.5	38'10"	
-1.5m t					27.6	31.7*	19.7	26.3*	15.3	20.6	12.4	16.6					11.3	15.0	11.4	
-5ft lb					59.8	71.8*	42.8	57.6*	33.3	44.6	27.1	36.0					25.1	33.3	37'2"	
-3.0m t			27.4*	27.4*	27.9	30.7*	19.8	25.1*	15.3	20.6	12.6	16.7					12.4	16.3*	10.7	
-10ft lb			63.2*	63.2*	60.4	67.4*	43.0	54.9*	33.4	44.7							27.7	36.3*	34'11"	
-4.5m t			33.3*	33.3*	27.6*	27.6*	20.2	22.7*	15.7	18.3*							14.5	16.1*	9.7	
-15ft lb			73.1*	73.1*	60.4*	60.4*	43.9	49.5*	34.3	39.5*							32.5	35.9*	31'6"	
-6.0m t			26.9*	26.9*	22.6*	22.6*	18.1*	18.1*									15.2*	15.2*	8.3	
-20ft lb			58.7*	58.7*	48.9*	48.9*	38.6*	38.6*									33.8*	33.8*	26'8"	
-7.5m t																				
-25ft lb																				
-9.0m t																				
-30ft lb																				
LC-V	12.0m t																			
	40ft lb																			
	10.5m t								16.2*	16.2*							16.4*	16.4*	9.1	
	35ft lb																36.5*	36.5*	29'5"	
	9.0m t								15.9*	15.9*								15.8*	15.8*	10.3
	30ft lb								35.2*	35.2*								35.1*	35.1*	33'5"
	7.5m t						18.5*	18.5*	16.6*	16.6*	15.6*	15.6*						13.9	15.5*	11.1
	25ft lb						40.2*	40.2*	36.4*	36.4*	33.5	34.5*						31.1	34.5*	36'2"
	6.0m t						20.6*	20.6*	17.8*	17.8*	15.2	16.1*						12.6	15.5*	11.6
	20ft lb						44.7*	44.7*	38.8*	38.8*	32.8	35.4*						28.0	34.4*	38'1"
4.5m t						23.0*	23.0*	18.5	19.1*	14.6	16.8*	11.7	15.5*				11.7	15.5*	12.0	
15ft lb						49.9*	49.9*	40.0	41.7*	31.7	36.9*						26.1	34.5*	39'4"	
3.0m t						22.6	25.0*	17.6	20.4*	14.1	17.6*	11.5	15.8*				11.3	15.6*	12.1	
10ft lb						49.0	54.5*	38.1	44.5*	30.6	38.5*						25.1	34.8*	39'10"	
1.5m t						21.6	26.3*	16.9	21.3*	13.6	18.1*	11.3	15.9*				11.2	15.8*	12.1	
5ft lb						46.9	57.4*	36.7	46.6*	29.6	39.7*						24.9	35.2*	39'7"	
0m t						21.0	26.7*	16.4	21.8*	13.3	18.4*						11.4	16.0*	11.8	
0ft lb						45.7	58.4*	35.7	47.6*	29.0	40.2*						25.4	35.7*	38'10"	
-1.5m t					29.2	32.6*	20.9	26.3*	16.2	21.6*	13.2	18.0*					12.0	16.2*	11.4	
-5ft lb					63.2	71.5*	45.3	57.5*	35.3	47.2*	28.8	39.4*					26.8	36.2*	37'2"	
-3.0m t			28.9*	28.9*	29.4	30.5*	21.0	24.9*	16.3	20.5*	13.4	16.6*					13.3	16.3*	10.7	
-10ft lb			66.5*	66.5*	63.8	66.9*	45.6	54.6*	35.4	44.8*							29.7	36.3*	34'11"	
-4.5m t			32.8*	32.8*	27.3*	27.3*	21.4	22.4*	16.7	18.0*							15.6	16.1*	9.7	
-15ft lb			72.1*	72.1*	59.6*	59.6*	46.5	48.8*	36.5	38.8*							34.9	35.8*	31'6"	
-6.0m t			26.2*	26.2*	22.0*	22.0*	17.5*	17.5*									15.1*	15.1*	8.3	
-20ft lb			57.1*	57.1*	47.5*	47.5*	37.0*	37.0*									33.4*	33.4*	26'8"	
-7.5m t																				
-25ft lb																				
-9.0m t																				
-30ft lb																				

Height Can be slewed through 360° In longitudinal position of undercarriage Max. reach * Limited by hydr. capacity

The load values are quoted in tons (t) / lb x 1,000 at stick end (without bucket), and may be swung 360° on firm and even ground. Adjacent values are valid for the undercarriage when in the longitudinal position. Capacities are valid for 750 mm / 30" wide track pads. Indicated loads are based on ISO 10567 standard and do not exceed 75% of tipping or 87% of hydraulic capacity (indicated via *). Without bucket cylinder, link and lever the lift capacities will increase by 1,320 kg / 2,910 lb. Lifting capacity of the excavator is limited by machine stability and hydraulic capacity.

Determine maximum load lift from load lift chart displayed in the operator's cab or from load lift chart detailed in the operator's manual supplied with the machine.

Stick 3.80 m / 12'6"

Under-carriage	3.0m 10ft		4.5m 15ft		6.0m 20ft		7.5m 25ft		9.0m 30ft		10.5m 35ft		12.0m 40ft		13.5m 45ft		m ft in		
12.0m t 40ft lb																	16.3*	16.3*	8.3
10.5m t 35ft lb									15.0*	15.0*							15.3*	15.3*	9.8
9.0m t 30ft lb									15.0*	15.0*	14.7*	14.7*					14.2	14.8*	10.8
7.5m t 25ft lb									15.7*	15.7*	14.8*	14.8*					12.4	14.6*	11.6
6.0m t 20ft lb							19.4*	19.4*	16.9*	16.9*	14.6	15.3*	11.5	14.6*			11.2	14.5*	12.1
4.5m t 15ft lb							21.8*	21.8*	17.9	18.3*	14.0	16.2*	11.2	14.7			10.4	13.7	12.5
3.0m t 10ft lb							21.8	24.1*	16.9	19.7*	13.4	17.0*	10.9	14.3			10.0	13.2	12.6
1.5m t 5ft lb							20.7	25.7*	16.1	20.8*	12.9	17.1	10.6	14.0			9.9	13.1	12.5
0m t 0ft lb							19.9	26.5*	15.5	20.8	12.5	16.7	10.4	13.8			10.0	13.3	12.3
-1.5m t -5ft lb					27.4	31.2*	19.6	26.4*	15.2	20.5	12.3	16.5					10.5	13.9	11.9
-3.0m t -10ft lb			25.7*	25.7*	27.5	31.6*	19.6	25.5*	15.1	20.4	12.3	16.5					11.4	15.2	11.2
-4.5m t -15ft lb	29.5*	29.5*	35.8*	35.8*	28.0	28.9*	19.9	23.5*	15.4	19.2*							13.1	15.5*	10.3
-6.0m t -20ft lb	67.1*	67.1*	78.6*	78.6*	60.7	63.2*	43.2	51.3*	33.6	41.7*							29.4	34.6*	33.6*
-7.5m t -25ft lb			65.4*	65.4*	53.3*	53.3*	42.8*	42.8*									25.0*	15.0*	9.0
-9.0m t -30ft lb																	33.4*	33.4*	29*
12.0m t 40ft lb																	16.1*	16.1*	8.3
10.5m t 35ft lb									15.0*	15.0*							15.2*	15.2*	9.8
9.0m t 30ft lb									15.0*	15.0*	14.6*	14.6*					14.8*	14.8*	10.8
7.5m t 25ft lb									15.8*	15.8*	14.8*	14.8*					12.9	14.6*	11.6
6.0m t 20ft lb							19.6*	19.6*	17.0*	17.0*	15.3	15.4*	12.1	14.6*			11.8	14.5*	12.1
4.5m t 15ft lb							22.0*	22.0*	18.4*	18.4*	14.8	16.2*	11.8	14.9*			11.0	14.6*	12.5
3.0m t 10ft lb							21.7	25.8*	16.9	20.9*	13.6	17.8*	11.2	15.6*			10.5	15.0*	12.5
1.5m t 5ft lb							22.9	24.3*	17.7	19.8*	14.2	17.1*	11.5	15.3*			10.6	14.8*	12.6
0m t 0ft lb							21.1	26.5*	16.4	21.5*	13.3	18.2*	11.0	15.7*			10.7	15.2*	12.3
-1.5m t -5ft lb					28.9	32.3*	20.8	26.4*	16.1	21.6*	13.1	18.1*					11.2	15.4*	11.9
-3.0m t -10ft lb			26.9*	26.9*	29.1	31.5*	20.8	25.4*	16.1	20.8*	13.1	17.2*					12.2	15.5*	11.2
-4.5m t -15ft lb	30.7*	30.7*	35.4*	35.4*	28.6*	28.6*	21.1	23.3*	16.3	19.0*							14.1	15.5*	10.3
-6.0m t -20ft lb	69.7*	69.7*	77.6*	77.6*	62.5*	62.5*	45.8	50.8*	35.6	41.1*							31.6	34.6*	33.6*
-7.5m t -25ft lb			63.9*	63.9*	52.2*	52.2*	41.8*	41.8*									14.9*	14.9*	9.0
-9.0m t -30ft lb																	33.2*	33.2*	29*

Height Can be slewed through 360° In longitudinal position of undercarriage Max. reach * Limited by hydr. capacity

The load values are quoted in tons (t) / lb x 1,000 at stick end (without bucket), and may be swung 360° on firm and even ground. Adjacent values are valid for the undercarriage when in the longitudinal position. Capacities are valid for 750 mm / 30" wide track pads. Indicated loads are based on ISO 10567 standard and do not exceed 75% of tipping or 87% of hydraulic capacity (indicated via *). Without bucket cylinder, link and lever the lift capacities will increase by 1,320 kg / 2,910 lb. Lifting capacity of the excavator is limited by machine stability and hydraulic capacity.

Determine maximum load lift from load lift chart displayed in the operator's cab or from load lift chart detailed in the operator's manual supplied with the machine.

Lift capacities

with mono boom 8.60 m / 28'3", counterweight 14.1 t / 31,090 lb and track pads 750 mm / 30"

Stick 4.70 m / 15'5"

Under-carriage	3.0m 10ft		4.5m 15ft		6.0m 20ft		7.5m 25ft		9.0m 30ft		10.5m 35ft		12.0m 40ft		13.5m 45ft		m ft in			
12.0m t																	13.2*	13.2*	9.5	
40ft lb																	29.7*	29.7*	30'7"	
10.5m t											13.2*	13.2*					12.1*	12.1*	10.9	
35ft lb											28.1*	28.1*					27.0*	27.0*	35'2"	
9.0m t											12.9*	12.9*					11.4*	11.4*	11.8	
30ft lb											28.8*	28.8*					25.5*	25.5*	38'7"	
7.5m t											13.3*	13.3*	11.9	12.9*			10.8	11.1*	12.5	
25ft lb										30.9*	30.9*	29.4*	29.4*	25.7	28.9*		24.3	24.8*	41'	
6.0m t										15.3*	15.3*	14.0*	14.0*	11.7	13.2*		9.8	11.0*	13.0	
20ft lb										33.6*	33.6*	30.9*	30.9*	25.3	29.4*		22.1	24.5*	42'8"	
4.5m t							19.8*	19.8*		16.8*	16.8*	14.2	14.9*	11.3	13.7*		9.2	11.1*	13.3	
15ft lb							43.3*	43.3*		36.9*	36.9*	30.8	32.9*	24.6	30.4*		20.7	24.7*	43'8"	
3.0m t							22.3*	22.3*		17.1	18.4*	13.5	15.9*	10.9	14.3*		8.8	11.4*	13.5	
10ft lb							48.7	48.9*		37.3	40.4*	29.5	35.1*	23.7	31.1		19.9	25.2*	44'2"	
1.5m t							20.9	24.4*		16.2	19.8*	12.9	16.8*	10.5	13.9		8.7	11.6	13.4	
5ft lb							45.7	53.4*		35.3	43.4*	28.2	37.1*	22.9	30.3		19.6	26.0	44'	
0m t							20.0	25.7*		15.5	20.7*	12.4	16.6	10.2	13.6		8.8	11.8	13.2	
0ft lb							43.6	56.3*		33.8	45.2	27.1	36.1	22.3	29.6		19.8	26.3	43'4"	
-1.5m t						27.0	30.3*		19.4	26.1*	15.0	20.3	12.1	16.2	10.0	13.4		9.1	12.2	12.8
-5ft lb						58.9	70.7*		42.4	57.4*	32.8	44.2	26.4	35.3	21.9	29.2		20.6	27.4	41'11"
-3.0m t																				
-10ft lb																				
-4.5m t	24.2*	24.2*																		
-15ft lb	55.0*	55.0*	22.8*	22.8*	26.9	32.6*	19.2	25.7*	14.8	20.1	11.9	16.1	10.0	13.4						
-6.0m t	35.2*	35.2*	52.4*	52.4*	58.7	71.7*	42.0	56.6*	32.4	43.7	26.2	35.1								
-20ft lb	80.3*	80.3*	33.4*	33.4*	27.2	30.6*	19.3	24.5*	14.8	20.0*	12.0	16.2								
-7.5m t			34.5*	34.5*	27.2*	27.2*	19.7	21.9*	15.2	17.6*										
-25ft lb			75.7*	75.7*	59.6*	59.6*	43.2	47.9*	33.5	38.2*										
-9.0m t			27.2*	27.2*	21.7*	21.7*	17.1*	17.1*												
-30ft lb			58.9*	58.9*	47.0*	47.0*	36.3*	36.3*												
12.0m t																	13.1*	13.1*	9.5	
40ft lb																	29.4*	29.4*	30'7"	
10.5m t												13.1*	13.1*				12.0*	12.0*	10.9	
35ft lb												29.5*	29.5*				26.8*	26.8*	35'2"	
9.0m t												12.9*	12.9*				11.4*	11.4*	11.8	
30ft lb												28.8*	28.8*				25.4*	25.4*	38'7"	
7.5m t												14.1*	14.1*	12.6	12.9*		11.1*	11.1*	12.5	
25ft lb												31.1*	31.1*	29.5*	29.5*	27.1	28.9*		41'	
6.0m t												15.4*	15.4*	14.1*	14.1*	12.3	13.2*		13.0	
20ft lb												38.2*	38.2*	33.9*	33.9*	31.1*	31.1*	26.6	29.4*	
4.5m t												17.5*	17.5*	15.4*	15.4*	14.1*	14.1*	10.4	11.0*	
15ft lb												20.1*	20.1*	17.0*	17.0*	14.9	15.0*	11.9	13.8*	
3.0m t												43.8*	43.8*	37.2*	37.2*	32.4	33.1*	25.9	30.5*	
10ft lb												22.6*	22.6*	17.9	18.5*	14.2	16.0*	11.5	14.3*	
1.5m t												49.3*	49.3*	39.1	40.7*	31.0	35.3*	25.1	31.7*	
5ft lb												22.0	24.5*	17.0	19.9*	13.6	16.9*	11.1	14.9*	
0m t												48.0	53.7*	37.1	43.6*	29.7	37.2*	24.3	32.9*	
0ft lb												21.1	25.7*	16.3	20.8*	13.1	17.5*	10.8	15.2*	
-1.5m t												46.0	56.5*	35.7	45.7*	28.7	38.6*	23.6	33.5*	
-5ft lb												28.5	31.0*	20.5	26.1*	15.9	21.2*	12.8	17.8*	
-3.0m t																				
-10ft lb																				
-4.5m t																				
-15ft lb	25.0*	25.0*	23.7*	23.7*	28.5	32.4*	20.3	25.7*	15.7	20.9*	12.7	17.4*								
-6.0m t	36.4*	36.4*	54.2*	54.2*	62.1	71.4*	44.5	56.4*	34.4	46.0*	27.8	38.3*								
-20ft lb	82.9*	82.9*	34.5*	34.5*	28.8	30.3*	20.5	24.3*	15.8	19.8*	12.8	16.2*								
-7.5m t			34.0*	34.0*	26.8*	26.8*	20.9	21.6*	16.2	17.3*										
-25ft lb			74.5*	74.5*	58.8*	58.8*	45.8	47.2*	35.6	37.4*										
-9.0m t			26.3*	26.3*	21.1*	21.1*	16.4*	16.4*												
-30ft lb			57.0*	57.0*	45.5*	45.5*	34.8*	34.8*												

Height Can be slewed through 360° In longitudinal position of undercarriage Max. reach * Limited by hydr. capacity

The load values are quoted in tons (t) / lb x 1,000 at stick end (without bucket), and may be swung 360° on firm and even ground. Adjacent values are valid for the undercarriage when in the longitudinal position. Capacities are valid for 750 mm / 30" wide track pads. Indicated loads are based on ISO 10567 standard and do not exceed 75% of tipping or 87% of hydraulic capacity (indicated via *). Without bucket cylinder, link and lever the lift capacities will increase by 1,320 kg / 2,910 lb. Lifting capacity of the excavator is limited by machine stability and hydraulic capacity.

Determine maximum load lift from load lift chart displayed in the operator's cab or from load lift chart detailed in the operator's manual supplied with the machine.

Stick 5.80 m / 19'

Under-carriage	3.0m 10ft		4.5m 15ft		6.0m 20ft		7.5m 25ft		9.0m 30ft		10.5m 35ft		12.0m 40ft		13.5m 45ft		m ft in			
12.0m t											11.8*	11.8*					9.9*	9.9*	11.0	
40ft lb											23.8*	23.8*					22.1*	22.1*	35'6"	
10.5m t													10.1*	10.1*			9.2*	9.2*	12.2	
35ft lb																	20.4*	20.4*	39'6"	
9.0m t														11.6*	11.6*		8.8*	8.8*	13.0	
30ft lb														25.6*	25.6*		19.5*	19.5*	42'6"	
7.5m t											12.1*	12.1*		11.8*	11.8*	9.8*	9.8*	13.7		
25ft lb							18.0*	18.0*	15.6*	15.6*	26.4*	26.4*	25.9*	25.9*			19.0*	19.0*	44'8"	
6.0m t							20.8*	20.8*	17.4*	17.4*	30.5*	30.5*	25.7	28.3*	20.6	26.9	18.6	18.9*	47'2"	
20ft lb							44.9*	44.9*	37.7*	37.7*	44.9*	44.9*	37.7*	37.7*	30.7	33.1*	24.7	29.9*	47'7"	
4.5m t							22.3	23.3*	17.1	19.0*	14.3	15.2*	11.5	13.7*	9.4	12.3	8.1	8.8*	14.5	
15ft lb							48.0	50.5*	36.8	41.3*	29.2	35.5*	23.7	31.1	19.5	25.7	17.6	20.0*	47'6"	
3.0m t							21.0	25.2*	16.2	20.4*	13.0	17.2	10.6	14.1	8.8	11.7	8.0	9.6*	14.3	
10ft lb							45.3	54.6*	35.0	44.2*	28.0	36.9	22.8	30.2	18.9	25.2	17.8	21.1*	46'10"	
1.5m t							27.9	30.2*	20.2	26.3*	15.6	20.9	12.5	16.7	10.3	13.7	8.6	11.5	13.9	
5ft lb							60.1	70.2*	43.5	57.0*	33.6	45.0	27.0	35.9	22.2	29.5	18.6	24.8	45'6"	
0m t																				
0ft lb																				
-1.5m t																				
-5ft lb																				
-3.0m t			20.4*	20.4*	27.5	34.1*	19.7	26.5*	15.2	20.5	12.2	16.4	10.1	13.5			8.8	11.3*	13.3	
-10ft lb			46.5*	46.5*	59.2	74.0*	42.5	57.6*	32.8	44.1	26.4	35.3	21.9	29.2			19.4	24.9*	43'8"	
-4.5m t	19.9*	19.9*	27.8*	27.8*	27.5	32.9*	19.6	25.9*	15.1	20.4	12.1	16.3	10.1	13.5			9.6	12.7*	12.6	
-15ft lb	45.0*	45.0*	63.5*	63.5*	59.2	71.5*	42.2	56.3*	32.5	43.8	26.2	35.1	22.0	29.3			21.3	28.3*	41'1"	
-6.0m t	27.7*	27.7*	37.9*	37.9*	27.8	30.6*	19.7	24.4*	15.2	19.8*	12.3	16.2*					11.0	13.5*	11.5	
-20ft lb	62.9*	62.9*	86.8*	86.8*	59.9	66.3*	42.6	52.7*	32.8	42.8*	26.7	34.6*					24.5	29.9*	37'7"	
-7.5m t	38.2*	38.2*	34.4*	34.4*	26.7*	26.7*	20.2	21.3*	15.6	17.0*							13.3*	13.3*	10.2	
-25ft lb	87.3*	87.3*	74.0*	74.0*	57.4*	57.4*	43.8	45.7*	34.0	35.9*							29.4*	29.4*	32'11"	
-9.0m t			25.7*	25.7*	20.1*	20.1*	15.3*	15.3*									12.3*	12.3*	8.3	
-30ft lb			54.0*	54.0*	42.1*	42.1*	31.1*	31.1*									27.1*	27.1*	26'6"	
12.0m t											24.7*	24.7*					9.8*	9.8*	11.0	
40ft lb																	21.9*	21.9*	35'6"	
10.5m t													10.5*	10.5*			9.2*	9.2*	12.2	
35ft lb																	20.3*	20.3*	39'6"	
9.0m t														11.6*	11.6*		8.8*	8.8*	13.0	
30ft lb														25.6*	25.6*		19.4*	19.4*	42'6"	
7.5m t											12.1*	12.1*		11.8*	11.8*	10.0*	10.0*	13.7		
25ft lb											26.5*	26.5*		26.0*	26.0*		18.9*	18.9*	44'8"	
6.0m t											13.0*	13.0*		12.4*	12.4*	10.4	11.9*	14.1		
20ft lb											28.4*	28.4*		27.0*	27.0*		22.3	24.4*	46'4"	
4.5m t							18.2*	18.2*	15.7*	15.7*	14.1*	14.1*		12.6	13.0*	10.2	12.3*	14.4		
15ft lb							39.3*	39.3*	34.1*	34.1*	30.7*	30.7*		27.0	28.5*	21.8	27.0*	18.9*	47'2"	
3.0m t							21.0*	21.0*	17.5*	17.5*	15.0	15.3*		12.1	13.8*	9.9	12.8*	14.5		
10ft lb							45.4*	45.4*	38.0*	38.0*	32.2	33.3*		26.0	30.1*	21.2	27.9*	19.1	19.4*	47'7"
1.5m t							23.3	23.5*	18.0	19.2*	14.3	16.4*		11.7	14.5*	9.6	13.2*	14.5		
5ft lb							50.2	50.9*	38.6	41.6*	30.8	35.7*		25.0	31.7*	20.6	28.7*	18.8	20.1*	47'6"
0m t							22.1	25.3*	17.1	20.5*	13.7	17.3*		11.3	15.1*	9.4	13.5*	14.3		
0ft lb							47.6	54.9*	36.8	44.4*	29.5	37.6*		24.2	32.9*	20.2	29.3*	19.0	21.2*	46'10"
-1.5m t							29.4	30.5*	21.3	26.3*	16.5	21.3*		10.9	15.4*	9.2	13.4*	13.9		
-5ft lb							63.4	71.0*	45.9	57.1*	35.5	46.3*		23.6	38.9*	23.6	33.6*	19.6	22.8*	45'6"
-3.0m t	14.1*	14.1*	21.0*	21.0*	29.0	34.0*	20.9	26.5*	16.1	21.5*	13.0	18.0*		10.8	15.4*		9.4	11.4*	13.3	
-10ft lb	31.8*	31.8*	47.8*	47.8*	62.5	73.9*	45.0	57.6*	34.8	46.8*	28.0	39.2*		23.3	33.3*		20.8	25.1*	43'8"	
-4.5m t	20.5*	20.5*	28.6*	28.6*	29.0	32.7*	20.7	25.9*	16.0	21.1*	12.9	17.5*		10.8	14.5*		10.3	12.9*	12.6	
-15ft lb	46.4*	46.4*	65.2*	65.2*	62.5	71.1*	44.7	56.1*	34.5	45.7*	27.9	37.9*		23.4	31.0*		22.9	28.6*	41'1"	
-6.0m t	28.5*	28.5*	39.0*	39.0*	29.4	30.3*	20.9	24.2*	16.1	19.7*	13.1	16.0*					11.8	13.5*	11.5	
-20ft lb	64.6*	64.6*	85.9*	85.9*	63.4	65.7*	45.2	52.3*	34.9	42.4*	28.4	34.1*					26.4	29.9*	37'7"	
-7.5m t	39.4*	39.4*	33.8*	33.8*	26.2*	26.2*	20.9*	20.9*	16.6*	16.6*							13.3*	13.3*	10.2	
-25ft lb	89.9*	89.9*	72.6*	72.6*	56.4*	56.4*	44.9*	44.9*	35.0*	35.0*							29.3*	29.3*	32'11"	
-9.0m t			24.7*	24.7*	19.3*	19.3*	14.5*	14.5*									12.2*	12.2*	8.3	
-30ft lb					40.3*	40.3*	29.0*	29.0*									28.6*	28.6*	26'6"	

Height Can be slewed through 360° In longitudinal position of undercarriage Max. reach * Limited by hydr. capacity

The load values are quoted in tons (t) / lb x 1,000 at stick end (without bucket), and may be swung 360° on firm and even ground. Adjacent values are valid for the undercarriage when in the longitudinal position. Capacities are valid for 750 mm / 30" wide track pads. Indicated loads are based on ISO 10567 standard and do not exceed 75% of tipping or 87% of hydraulic capacity (indicated via *). Without bucket cylinder, link and lever the lift capacities will increase by 1,320 kg / 2,910 lb. Lifting capacity of the excavator is limited by machine stability and hydraulic capacity. Determine maximum load lift from load lift chart displayed in the operator's cab or from load lift chart detailed in the operator's manual supplied with the machine.

Lift capacities

with mono boom 8.60 m / 28'3", counterweight 16.0 t / 35,270 lb and track pads 750 mm / 30"

Stick 3.30 m / 10'10"

Under-carriage	3.0m 10ft		4.5m 15ft		6.0m 20ft		7.5m 25ft		9.0m 30ft		10.5m 35ft		12.0m 40ft		13.5m 45ft		m ft in	
12.0m t																		
40ft lb																		
10.5m t									16.3*	16.3*						16.4*	16.4*	9.1
35ft lb																36.6*	36.6*	29'5"
9.0m t									15.9*	15.9*						15.8*	15.8*	10.3
30ft lb									35.1*	35.1*						35.2*	35.2*	33'5"
7.5m t							18.3*	18.3*	16.5*	16.5*	15.6*	15.6*				14.3	15.5*	11.1
25ft lb							39.8*	39.8*	36.2*	36.2*	34.1	34.5*				31.9	34.5*	36'2"
6.0m t							20.4*	20.4*	17.6*	17.6*	15.5	16.0*				12.9	15.5*	11.6
20ft lb							44.3*	44.3*	38.5*	38.5*	33.4	35.2*				28.7	34.4*	38'1"
4.5m t							22.8*	22.8*	18.9	19.0*	14.9	16.7*				12.0	15.5*	12.0
15ft lb							49.5*	49.5*	40.8	41.5*	32.3	36.7*				26.7	34.5*	39'4"
3.0m t							23.1	24.9*	17.9	20.3*	14.4	17.5*	11.7	15.2		11.5	15.0	12.1
10ft lb							50.1	54.1*	38.9	44.3*	31.2	38.3*				25.6	33.2	39'10"
1.5m t							22.0	26.3*	17.2	21.3*	13.9	18.1*	11.5	15.0		11.4	14.9	12.1
5ft lb							47.9	57.2*	37.4	46.5*	30.2	39.4				25.3	33.0	39'7"
0m t							21.5	26.7*	16.7	21.8*	13.6	17.9				11.6	15.2	11.8
0ft lb							46.6	58.4*	36.4	47.6*	29.5	38.7				25.7	33.6	38'10"
-1.5m t					29.7	31.7*	21.3	26.3*	16.5	21.6*	13.4	17.7				12.2	16.0	11.4
-5ft lb					64.3	71.8*	46.2	57.6*	35.9	47.3*	29.3	38.5				27.1	35.5	37'2"
-3.0m t			27.4*	27.4*	30.0	30.7*	21.3	25.1*	16.5	20.7*	13.6	16.8*				13.4	16.3*	10.7
-10ft lb			63.2*	63.2*	64.9	67.4*	46.4	54.9*	36.0	45.1*						29.9	36.3*	34'11"
-4.5m t			33.3*	33.3*	27.6*	27.6*	21.7	22.7*	16.9	18.3*						15.6	16.1*	9.7
-15ft lb			73.1*	73.1*	60.4*	60.4*	47.2	49.5*	36.9	39.5*						34.9	35.9*	31'6"
-6.0m t			26.9*	26.9*	22.6*	22.6*	18.1*	18.1*								15.2*	15.2*	8.3
-20ft lb			58.7*	58.7*	48.9*	48.9*	38.6*	38.6*								33.8*	33.8*	26'8"
-7.5m t																		
-25ft lb																		
-9.0m t																		
-30ft lb																		
12.0m t																		
40ft lb																		
10.5m t									16.2*	16.2*						16.4*	16.4*	9.1
35ft lb																36.5*	36.5*	29'5"
9.0m t									15.9*	15.9*						15.8*	15.8*	10.3
30ft lb									35.2*	35.2*						35.1*	35.1*	33'5"
7.5m t							18.5*	18.5*	16.6*	16.6*	15.6*	15.6*				14.8	15.5*	11.1
25ft lb							40.2*	40.2*	36.4*	36.4*	34.5*	34.5*				33.1	34.5*	36'2"
6.0m t							20.6*	20.6*	17.8*	17.8*	16.1*	16.1*				13.4	15.5*	11.6
20ft lb							44.7*	44.7*	38.8*	38.8*	35.0	35.4*				29.9	34.4*	38'1"
4.5m t							23.0*	23.0*	19.1*	19.1*	15.6	16.8*	12.6	15.5*		12.6	15.5*	12.0
15ft lb							49.9*	49.9*	41.7*	41.7*	33.9	36.9*				28.0	34.5*	39'4"
3.0m t							24.1	25.0*	18.8	20.4*	15.1	17.6*	12.3	15.8*		12.1	15.6*	12.1
10ft lb							52.3	54.5*	40.8	44.5*	32.7	38.5*				27.0	34.8*	39'10"
1.5m t							23.1	26.3*	18.1	21.3*	14.6	18.1*	12.1	15.9*		12.0	15.8*	12.1
5ft lb							50.2	57.4*	39.3	46.6*	31.8	39.7*				26.7	35.2*	39'7"
0m t							22.6	26.7*	17.6	21.8*	14.3	18.4*				12.3	16.0*	11.8
0ft lb							49.0	58.4*	38.3	47.6*	31.1	40.2*				27.3	35.7*	38'10"
-1.5m t					31.2	32.6*	22.4	26.3*	17.4	21.6*	14.2	18.0*				13.0	16.2*	11.4
-5ft lb					67.7	71.5*	48.6	57.5*	37.9	47.2*	30.9	39.4*				28.9	36.2*	37'2"
-3.0m t			28.9*	28.9*	30.5*	30.5*	22.5	24.9*	17.5	20.5*	14.4	16.6*				14.3	16.3*	10.7
-10ft lb			66.5*	66.5*	66.9*	66.9*	48.9	54.6*	38.0	44.8*						31.9	36.3*	34'11"
-4.5m t			32.8*	32.8*	27.3*	27.3*	22.4*	22.4*	17.9	18.0*						16.1*	16.1*	9.7
-15ft lb			72.1*	72.1*	59.6*	59.6*	48.8*	48.8*	38.8*	38.8*						35.8*	35.8*	31'6"
-6.0m t			26.2*	26.2*	22.0*	22.0*	17.5*	17.5*								15.1*	15.1*	8.3
-20ft lb			57.1*	57.1*	47.5*	47.5*	37.0*	37.0*								33.4*	33.4*	26'8"
-7.5m t																		
-25ft lb																		
-9.0m t																		
-30ft lb																		

Height Can be slewed through 360° In longitudinal position of undercarriage Max. reach * Limited by hydr. capacity

The load values are quoted in tons (t) / lb x 1,000 at stick end (without bucket), and may be swung 360° on firm and even ground. Adjacent values are valid for the undercarriage when in the longitudinal position. Capacities are valid for 750 mm / 30" wide track pads. Indicated loads are based on ISO 10567 standard and do not exceed 75% of tipping or 87% of hydraulic capacity (indicated via *). Without bucket cylinder, link and lever the lift capacities will increase by 1,320 kg / 2,910 lb. Lifting capacity of the excavator is limited by machine stability and hydraulic capacity.

Determine maximum load lift from load lift chart displayed in the operator's cab or from load lift chart detailed in the operator's manual supplied with the machine.

Stick 3.80 m / 12'6"

Under-carriage	3.0m 10ft		4.5m 15ft		6.0m 20ft		7.5m 25ft		9.0m 30ft		10.5m 35ft		12.0m 40ft		13.5m 45ft		m ft in		
12.0m t 40ft lb																	16.3*	16.3*	8.3
10.5m t 35ft lb									15.0*	15.0*							15.3*	15.3*	9.8
9.0m t 30ft lb									15.0*	15.0*	14.7*	14.7*					14.8*	14.8*	10.8
7.5m t 25ft lb									15.7*	15.7*	14.8*	14.8*					13.3	14.6*	11.6
6.0m t 20ft lb							19.4*	19.4*	16.9*	16.9*	15.3*	15.3*	12.3	14.6*			12.0	14.5*	12.1
4.5m t 15ft lb							21.8*	21.8*	18.3*	18.3*	15.0*	16.2*	12.1	14.8*			11.2	14.6*	12.5
3.0m t 10ft lb							23.4*	24.1*	18.1*	19.7*	14.4*	17.0*	11.7	15.3*			10.8	14.1	12.6
1.5m t 5ft lb							22.2	25.7*	17.3	20.8*	13.9	17.7*	11.4	15.0			10.7	14.0	12.5
0m t 0ft lb							21.5	26.5*	16.7	21.5*	13.5	17.8	11.2	14.7			10.8	14.2	12.3
-1.5m t -5ft lb					29.5	31.2*	21.2	26.4*	16.4	21.6*	13.3	17.6					11.3	14.9	11.9
-3.0m t -10ft lb			25.7*	25.7*	29.7	31.6*	21.1	25.5*	16.4	20.9*	13.3	17.3*					12.3	15.5*	11.2
-4.5m t -15ft lb	29.5*	29.5*	35.8*	35.8*	28.9*	28.9*	21.4	23.5*	16.6	19.2*	13.3	17.3*					14.1	15.5*	10.3
-6.0m t -20ft lb	67.1*	67.1*	78.6*	78.6*	63.2*	63.2*	46.6	51.3*	36.2	41.7*	29.1	37.6*					31.7	34.6*	33.6*
-7.5m t -25ft lb			65.4*	65.4*	53.3*	53.3*	42.8*	42.8*									33.4*	33.4*	29*
-9.0m t -30ft lb																			
12.0m t 40ft lb																	16.1*	16.1*	8.3
10.5m t 35ft lb									15.0*	15.0*							15.2*	15.2*	9.8
9.0m t 30ft lb									15.0*	15.0*	14.6*	14.6*					14.8*	14.8*	10.8
7.5m t 25ft lb									15.8*	15.8*	14.8*	14.8*					13.8	14.6*	11.6
6.0m t 20ft lb							19.6*	19.6*	17.0*	17.0*	15.4*	15.4*	13.0	14.6*			12.6	14.5*	12.1
4.5m t 15ft lb							22.0*	22.0*	18.4*	18.4*	15.7	16.2*	12.7	14.9*			11.8	14.6*	12.5
3.0m t 10ft lb							23.3	25.8*	18.2	20.9*	14.6	17.8*	12.1	15.6*			11.3	15.0*	12.5
1.5m t 5ft lb							22.6	26.5*	17.6	21.5*	14.3	18.2*	11.9	15.7*			11.5	15.2*	12.3
0m t 0ft lb							49.0	57.9*	38.2	47.1*	31.0	39.7*	25.8	34.2*			25.6	33.9*	40.5*
-1.5m t -5ft lb					31.0	32.3*	22.3	26.4*	17.3	21.6*	14.1	18.1*					12.1	15.4*	11.9
-3.0m t -10ft lb			26.9*	26.9*	31.2	31.5*	22.3	25.4*	17.3	20.8*	14.1	17.2*					13.2	15.5*	11.2
-4.5m t -15ft lb	30.7*	30.7*	35.4*	35.4*	28.6*	28.6*	22.6	23.3*	17.5	19.0*	30.8	37.3*					29.4	34.7*	36.7*
-6.0m t -20ft lb	69.7*	69.7*	77.6*	77.6*	62.5*	62.5*	49.1	50.8*	38.3	41.1*							33.9	34.6*	33.6*
-7.5m t -25ft lb			63.9*	63.9*	52.2*	52.2*	41.8*	41.8*									33.2*	33.2*	29*
-9.0m t -30ft lb																			

Height Can be slewed through 360° In longitudinal position of undercarriage Max. reach * Limited by hydr. capacity

The load values are quoted in tons (t) / lb x 1,000 at stick end (without bucket), and may be swung 360° on firm and even ground. Adjacent values are valid for the undercarriage when in the longitudinal position. Capacities are valid for 750 mm / 30" wide track pads. Indicated loads are based on ISO 10567 standard and do not exceed 75% of tipping or 87% of hydraulic capacity (indicated via *). Without bucket cylinder, link and lever the lift capacities will increase by 1,320 kg / 2,910 lb. Lifting capacity of the excavator is limited by machine stability and hydraulic capacity.

Determine maximum load lift from load lift chart displayed in the operator's cab or from load lift chart detailed in the operator's manual supplied with the machine.

Lift capacities

with mono boom 8.60 m / 28'3", counterweight 16.0 t / 35,270 lb and track pads 750 mm / 30"

Stick 4.70 m / 15'5"

Under-carriage	3.0m 10ft		4.5m 15ft		6.0m 20ft		7.5m 25ft		9.0m 30ft		10.5m 35ft		12.0m 40ft		13.5m 45ft		m ft in		
12.0m t																	13.2*	13.2*	9.5
40ft lb																	29.7*	29.7*	30'7"
10.5m t											13.2*	13.2*					12.1*	12.1*	10.9
35ft lb											28.1*	28.1*					27.0*	27.0*	35'2"
9.0m t											12.9*	12.9*					11.4*	11.4*	11.8
30ft lb											28.8*	28.8*					25.5*	25.5*	38'7"
7.5m t											13.3*	13.3*	12.8	12.9*			11.1*	11.1*	12.5
25ft lb											30.9*	30.9*	27.5	28.9*			24.8*	24.8*	41'
6.0m t											15.3*	15.3*	14.0*	14.0*	12.5	13.2*	10.6	11.0*	13.0
20ft lb											33.6*	33.6*	30.9*	30.9*	27.1	29.4*	23.8	24.5*	42'8"
4.5m t							19.8*	19.8*			16.8*	16.8*	14.9*	14.9*	12.1	13.7*	10.0	11.1*	13.3
15ft lb							43.3*	43.3*			36.9*	36.9*	32.9*	32.9*	26.4	30.4*	22.4	24.7*	43'8"
3.0m t							22.3*	22.3*	18.3	18.4*	14.5	15.9*	11.7	14.3*			9.6	11.4*	13.5
10ft lb							48.9*	48.9*	39.9	40.4*	31.6	35.1*	25.6	31.6*			21.5	25.2*	44'2"
1.5m t							22.5	24.4*	17.4	19.8*	13.9	16.8*	11.3	14.8*			9.4	11.8*	13.4
5ft lb							49.0	53.4*	37.9	43.4*	30.3	37.1*	24.8	32.3			21.2	26.2*	44'
0m t							21.5	25.7*	16.7	20.7*	13.4	17.5*	11.0	14.5			9.5	12.5*	13.2
0ft lb							46.9	56.3*	36.4	45.6*	29.3	38.5	24.1	31.7			21.5	27.8*	43'4"
-1.5m t					29.1	30.3*	20.9	26.1*	16.2	21.2*	13.1	17.3	10.8	14.3			9.9	13.1	12.8
-5ft lb					63.4	70.7*	45.7	57.4*	35.4	46.6*	28.6	37.8	23.7	31.3			22.3	29.4	41'11"
-3.0m t			22.8*	22.8*	29.0	32.6*	20.7	25.7*	16.0	21.0*	12.9	17.2	10.8	14.3			10.6	14.1	12.2
-10ft lb			52.4*	52.4*	63.3	71.7*	45.3	56.6*	35.0	46.2*	28.3	37.5					24.0	31.6	39'10"
-4.5m t	24.2*	24.2*	33.4*	33.4*	29.3	30.6*	20.8	24.5*	16.0	20.0*	13.0	16.3*					11.9	14.2*	11.3
-15ft lb	55.0*	55.0*	76.7*	76.7*	63.9	67.2*	45.5	53.7*	35.2	43.8*	28.7	35.6*					26.9	32.0*	36'11"
-6.0m t	35.2*	35.2*	34.5*	34.5*	27.2*	27.2*	21.2	21.9*	16.4	17.6*							14.1*	14.1*	10.1
-20ft lb	80.3*	80.3*	75.7*	75.7*	59.6*	59.6*	46.5	47.9*	36.1	38.2*							31.7*	31.7*	33'
-7.5m t			27.2*	27.2*	21.7*	21.7*	17.1*	17.1*									13.3*	13.3*	8.6
-25ft lb			58.9*	58.9*	47.0*	47.0*	36.3*	36.3*									29.8*	29.8*	27'7"
-9.0m t																			
-30ft lb																			
12.0m t																	13.1*	13.1*	9.5
40ft lb																	29.4*	29.4*	30'7"
10.5m t											13.1*	13.1*					12.0*	12.0*	10.9
35ft lb											29.5*	29.5*					26.8*	26.8*	35'2"
9.0m t											12.9*	12.9*					11.4*	11.4*	11.8
30ft lb											28.8*	28.8*					25.4*	25.4*	38'7"
7.5m t											14.1*	14.1*	13.3*	13.3*	12.9*	12.9*	11.1*	11.1*	12.5
25ft lb											31.1*	31.1*	29.5*	29.5*	28.9*	28.9*	24.7*	24.7*	41'
6.0m t							17.5*	17.5*	15.4*	15.4*	14.1*	14.1*	13.1	13.2*			11.0*	11.0*	13.0
20ft lb							38.2*	38.2*	33.9*	33.9*	31.1*	31.1*	28.5	29.4*			24.5*	24.5*	42'8"
4.5m t							20.1*	20.1*	17.0*	17.0*	15.0*	15.0*	12.8	13.8*			10.5	11.1*	13.3
15ft lb							43.8*	43.8*	37.2*	37.2*	33.1*	33.1*	27.7	30.5*			23.5	24.7*	43'8"
3.0m t							22.6*	22.6*	18.5*	18.5*	15.2	16.0*	12.3	14.3*			10.1	11.4*	13.5
10ft lb							49.3*	49.3*	40.7*	40.7*	33.1	35.3*	26.9	31.7*			22.7	25.3*	44'2"
1.5m t							23.5	24.5*	18.2	19.9*	14.6	16.9*	11.9	14.9*			10.0	11.9*	13.4
5ft lb							51.3	53.7*	39.8	43.6*	31.9	37.2*	26.1	32.9*			22.5	26.4*	44'
0m t							22.6	25.7*	17.5	20.8*	14.1	17.5*	11.6	15.2*			10.2	12.6*	13.2
0ft lb							49.3	56.5*	38.3	45.7*	30.9	38.6*	25.5	33.5*			22.8	28.0*	43'4"
-1.5m t					30.6	31.0*	22.1	26.1*	17.1	21.2*	13.8	17.8*	11.5	15.2*			10.6	13.7*	12.8
-5ft lb					66.7	72.3*	48.2	57.4*	37.4	46.6*	30.2	39.1*	25.1	33.3*			23.8	30.4*	41'11"
-3.0m t			23.7*	23.7*	30.6	32.4*	21.9	25.7*	16.9	20.9*	13.7	17.4*	11.5	14.4*			11.4	14.1*	12.2
-10ft lb			54.2*	54.2*	66.6	71.4*	47.8	56.4*	37.0	46.0*	30.0	38.3*					25.6	31.8*	39'10"
-4.5m t			34.5*	34.5*	30.3*	30.3*	22.0	24.3*	17.0	19.8*	13.8	16.2*					12.8	14.2*	11.3
-15ft lb	56.9*	56.9*	79.2*	79.2*	66.7*	66.7*	48.1	53.3*	37.2	43.5*	30.4	35.2*					28.8	32.0*	36'11"
-6.0m t	36.4*	36.4*	34.0*	34.0*	26.8*	26.8*	21.6*	21.6*	17.3*	17.3*							14.1*	14.1*	10.1
-20ft lb	82.9*	82.9*	74.5*	74.5*	58.8*	58.8*	47.2*	47.2*	37.4*	37.4*							31.6*	31.6*	33'
-7.5m t			26.3*	26.3*	21.1*	21.1*	16.4*	16.4*									13.2*	13.2*	8.6
-25ft lb			57.0*	57.0*	45.5*	45.5*	34.8*	34.8*									29.5*	29.5*	27'7"
-9.0m t																			
-30ft lb																			

Height Can be slewed through 360° In longitudinal position of undercarriage Max. reach * Limited by hydr. capacity

The load values are quoted in tons (t) / lb x 1,000 at stick end (without bucket), and may be swung 360° on firm and even ground. Adjacent values are valid for the undercarriage when in the longitudinal position. Capacities are valid for 750 mm / 30" wide track pads. Indicated loads are based on ISO 10567 standard and do not exceed 75% of tipping or 87% of hydraulic capacity (indicated via *). Without bucket cylinder, link and lever the lift capacities will increase by 1,320 kg / 2,910 lb. Lifting capacity of the excavator is limited by machine stability and hydraulic capacity.

Determine maximum load lift from load lift chart displayed in the operator's cab or from load lift chart detailed in the operator's manual supplied with the machine.

Stick 5.80 m / 19'

Under-carriage	3.0m 10ft		4.5m 15ft		6.0m 20ft		7.5m 25ft		9.0m 30ft		10.5m 35ft		12.0m 40ft		13.5m 45ft		m ft in		
12.0m t											11.8*	11.8*					9.9*	9.9*	11.0
40ft lb											23.8*	23.8*					22.1*	22.1*	35'6"
10.5m t													10.1*	10.1*			9.2*	9.2*	12.2
35ft lb																	20.4*	20.4*	39'6"
9.0m t													11.6*	11.6*			8.8*	8.8*	13.0
30ft lb													25.6*	25.6*			19.5*	19.5*	42'6"
7.5m t											12.1*	12.1*			9.8*	9.8*	8.6*	8.6*	13.7
25ft lb											26.4*	26.4*					19.0*	19.0*	44'8"
6.0m t											12.9*	12.9*			10.6	11.8*	8.5*	8.5*	14.1
20ft lb											28.2*	28.2*			22.7	24.1*	18.8*	18.8*	46'4"
4.5m t							18.0*	18.0*	15.6*	15.6*	14.0*	14.0*			12.8	13.0*	8.6*	8.6*	14.4
15ft lb							38.7*	38.7*	33.8*	33.8*	30.5*	30.5*			27.5	28.3*	18.9*	18.9*	47'2"
3.0m t							20.8*	20.8*	17.4*	17.4*	15.2*	15.2*			12.4	13.7*	8.8*	8.8*	14.5
10ft lb							44.9*	44.9*	37.7*	37.7*	32.9	33.1*			26.5	29.9*	19.3*	19.3*	47'7"
1.5m t							23.3*	23.3*	18.3	19.0*	14.6	16.3*			11.9	14.5*	8.7	9.1*	14.5
5ft lb							50.5*	50.5*	39.5	41.3*	31.4	35.5*			25.5	31.5*	21.1	27.5	47'6"
0m t							22.6	25.2*	17.5	20.4*	14.0	17.3*			11.5	15.0	8.7	9.6*	14.3
0ft lb							48.6	54.6*	37.6	44.2*	30.1	37.5*			24.7	32.3	19.3	21.1*	46'10"
-1.5m t					30.1	30.2*	21.7	26.3*	16.8	21.2*	13.5	17.8			11.2	14.7	9.4	12.4	13.9
-5ft lb					64.7	70.2*	46.8	57.0*	36.2	46.2*	29.2	38.4			24.1	31.6	20.2	26.6	45'6"
-3.0m t			20.4*	20.4*	29.6	34.1*	21.3	26.5*	16.4	21.5*	13.2	17.5			11.0	14.5	9.5	11.3*	13.3
-10ft lb			46.5*	46.5*	63.8	74.0*	45.8	57.6*	35.4	46.8*	28.6	37.8			23.7	31.2	21.1	24.9*	43'8"
-4.5m t	19.9*	19.9*	27.8*	27.8*	29.6	32.9*	21.1	25.9*	16.3	21.2*	13.1	17.4			11.0	14.5	10.4	12.7*	12.6
-15ft lb	45.0*	45.0*	63.5*	63.5*	63.7	71.5*	45.6	56.3*	35.2	45.9*	28.4	37.6			23.8	31.3*	23.1	28.3*	41'1"
-6.0m t	27.7*	27.7*	37.9*	37.9*	29.9	30.6*	21.3	24.4*	16.4	19.8*	13.3	16.2*					11.9	13.5*	11.5
-20ft lb	62.9*	62.9*	86.8*	86.8*	64.5	66.3*	46.0	52.7*	35.5	42.8*	28.8	34.6*					26.5	29.9*	37'7"
-7.5m t	38.2*	38.2*	34.4*	34.4*	26.7*	26.7*	21.3*	21.3*	16.8	17.0*							13.3*	13.3*	10.2
-25ft lb	87.3*	87.3*	74.0*	74.0*	57.4*	57.4*	45.7*	45.7*	35.9*	35.9*							29.4*	29.4*	32'11"
-9.0m t			25.7*	25.7*	20.1*	20.1*	15.3*	15.3*									12.3*	12.3*	8.3
-30ft lb			54.0*	54.0*	42.1*	42.1*	31.1*	31.1*									27.1*	27.1*	26'6"
12.0m t											24.7*	24.7*					9.8*	9.8*	11.0
40ft lb																	21.9*	21.9*	35'6"
10.5m t													10.5*	10.5*			9.2*	9.2*	12.2
35ft lb																	20.3*	20.3*	39'6"
9.0m t													11.6*	11.6*			8.8*	8.8*	13.0
30ft lb													25.6*	25.6*			19.4*	19.4*	42'6"
7.5m t											12.1*	12.1*			10.0*	10.0*	8.6*	8.6*	13.7
25ft lb											26.5*	26.5*					18.9*	18.9*	44'8"
6.0m t											13.0*	13.0*			11.2	11.9*	8.5*	8.5*	14.1
20ft lb											28.4*	28.4*			27.0*	27.0*	23.9	24.4*	46'4"
4.5m t							18.2*	18.2*	15.7*	15.7*	14.1*	14.1*			13.0*	13.0*	8.6*	8.6*	14.4
15ft lb							39.3*	39.3*	34.1*	34.1*	30.7*	30.7*			28.5*	28.5*	23.4	27.0*	47'2"
3.0m t							21.0*	21.0*	17.5*	17.5*	15.3*	15.3*			13.0	13.8*	8.8*	8.8*	14.5
10ft lb							45.4*	45.4*	38.0*	38.0*	33.3*	33.3*			27.8	30.1*	22.8	27.9*	47'7"
1.5m t							23.5*	23.5*	19.2	19.2*	15.3	16.4*			12.5	14.5*	10.4	13.2*	14.5
5ft lb							50.9*	50.9*	41.3	41.6*	32.9	35.7*			26.9	31.7*	22.2	28.7*	47'6"
0m t							23.6	25.3*	18.3	20.5*	14.7	17.3*			12.1	15.1*	10.1	13.5*	14.3
0ft lb							50.9	54.9*	39.4	44.4*	31.7	37.6*			26.0	32.9*	21.7	29.3*	46'10"
-1.5m t					30.5*	30.5*	22.8	26.3*	17.7	21.3*	14.3	17.9*			11.8	15.4*	9.9	13.4*	13.9
-5ft lb					67.9	71.0*	49.2	57.1*	38.1	46.3*	30.7	38.9*			25.4	33.6*	21.5	26.2*	45'6"
-3.0m t	14.1*	14.1*	21.0*	21.0*	31.1	34.0*	22.4	26.5*	17.3	21.5*	14.0	18.0*			11.6	15.4*	10.2	11.4*	13.3
-10ft lb	31.8*	31.8*	47.8*	47.8*	67.0	73.9*	48.3	57.6*	37.4	46.8*	30.2	39.2*			25.1	33.3*	22.5	25.1*	43'8"
-4.5m t	20.5*	20.5*	28.6*	28.6*	31.1	32.7*	22.3	25.9*	17.2	21.1*	13.9	17.5*			11.7	14.5*	11.1	12.9*	12.6
-15ft lb	46.4*	46.4*	65.2*	65.2*	67.1	71.1*	48.0	56.1*	37.1	45.7*	30.1	37.9*			25.3	31.0*	24.7	28.6*	41'1"
-6.0m t	28.5*	28.5*	39.0*	39.0*	30.3*	30.3*	22.4	24.2*	17.3	19.7*	14.1	16.0*					12.7	13.5*	11.5
-20ft lb	64.6*	64.6*	85.9*	85.9*	65.7*	65.7*	48.5	52.3*	37.5	42.4*	30.6	34.1*					28.4	29.9*	37'7"
-7.5m t	39.4*	39.4*	33.8*	33.8*	26.2*	26.2*	20.9*	20.9*	16.6*	16.6*							13.3*	13.3*	10.2
-25ft lb	89.9*	89.9*	72.6*	72.6*	56.4*	56.4*	44.9*	44.9*	35.0*	35.0*							29.3*	29.3*	32'11"
-9.0m t			24.7*	24.7*	19.3*	19.3*	14.5*	14.5*									12.2*	12.2*	8.3
-30ft lb					40.3*	40.3*	29.0*	29.0*									28.6*	28.6*	26'6"

Height Can be slewed through 360° In longitudinal position of undercarriage Max. reach * Limited by hydr. capacity

The load values are quoted in tons (t) / lb x 1,000 at stick end (without bucket), and may be swung 360° on firm and even ground. Adjacent values are valid for the undercarriage when in the longitudinal position. Capacities are valid for 750 mm / 30" wide track pads. Indicated loads are based on ISO 10567 standard and do not exceed 75% of tipping or 87% of hydraulic capacity (indicated via *). Without bucket cylinder, link and lever the lift capacities will increase by 1,320 kg / 2,910 lb. Lifting capacity of the excavator is limited by machine stability and hydraulic capacity.

Determine maximum load lift from load lift chart displayed in the operator's cab or from load lift chart detailed in the operator's manual supplied with the machine.

Lift capacities

with mono boom 10.50 m / 34'5", counterweight 16.0 t / 35,270 lb and track pads 750 mm / 30"

Stick 3.80 m / 12'6"

Under-carriage	3.0m 10ft		4.5m 15ft		6.0m 20ft		7.5m 25ft		9.0m 30ft		10.5m 35ft		12.0m 40ft		13.5m 45ft		15.0m 50ft		16.5m 55ft		m ft in			
13.5m t 45ft lb																								
12.0m t 40ft lb																						11.4*	11.4*	11.1
10.5m t 35ft lb																						25.6*	25.6*	35'10"
9.0m t 30ft lb																						11.0*	11.0*	12.2
7.5m t 25ft lb																						10.9*	10.9*	12.2
6.0m t 20ft lb																						11.4*	11.4*	13.1
4.5m t 15ft lb																						25.1*	25.1*	42'8"
3.0m t 10ft lb																						24.1*	24.1*	42'8"
1.5m t 5ft lb																						10.8*	10.8*	13.1
0m t 0ft lb																						11.2*	11.2*	13.7
-1.5m t -5ft lb																						9.6	10.8*	14.5
-3.0m t -10ft lb																						20.8	24.2*	44'11"
-4.5m t -15ft lb																						8.5	10.8*	14.2
-6.0m t -20ft lb																						19.1	24.3*	46'5"
-7.5m t -25ft lb																						8.0	10.7	14.5
-9.0m t -30ft lb																						17.9	23.9	47'5"
-10.5m t -35ft lb																						7.7	10.4	14.6
13.5m t 45ft lb																						12.2	15.5*	14.5
12.0m t 40ft lb																						12.2	15.5*	14.5
10.5m t 35ft lb																						17.0	22.9	47'8"
9.0m t 30ft lb																						7.6	10.3	14.5
7.5m t 25ft lb																						17.0	22.9	47'8"
6.0m t 20ft lb																						7.7	10.4	14.3
4.5m t 15ft lb																						17.2	23.2	47'
3.0m t 10ft lb																						7.9	10.8	13.9
1.5m t 5ft lb																						17.8	24.0	45'8"
0m t 0ft lb																						8.4	11.4	13.4
-1.5m t -5ft lb																						19.0	25.6	43'10"
-3.0m t -10ft lb																						9.3	11.9*	12.6
-4.5m t -15ft lb																						21.0	26.9*	41'2"
-6.0m t -20ft lb																						10.8	11.9*	11.6
-7.5m t -25ft lb																						24.4	26.9*	37'10"
-9.0m t -30ft lb																						11.6*	11.6*	10.2
-10.5m t -35ft lb																						26.1*	26.1*	33'2"
13.5m t 45ft lb																						10.4*	10.4*	8.4
12.0m t 40ft lb																						25.0*	25.0*	26'
10.5m t 35ft lb																								
9.0m t 30ft lb																								
7.5m t 25ft lb																								
6.0m t 20ft lb																								
4.5m t 15ft lb																								
3.0m t 10ft lb																								
1.5m t 5ft lb																								
0m t 0ft lb																								
-1.5m t -5ft lb																								
-3.0m t -10ft lb																								
-4.5m t -15ft lb																								
-6.0m t -20ft lb																								
-7.5m t -25ft lb																								
-9.0m t -30ft lb																								
-10.5m t -35ft lb																								

Height Can be slewed through 360° In longitudinal position of undercarriage Max. reach * Limited by hydr. capacity

The load values are quoted in tons (t) / lb x 1,000 at stick end (without bucket), and may be swung 360° on firm and even ground. Adjacent values are valid for the undercarriage when in the longitudinal position. Capacities are valid for 750 mm / 30" wide track pads. Indicated loads are based on ISO 10567 standard and do not exceed 75% of tipping or 87% of hydraulic capacity (indicated via *). Without bucket cylinder, link and lever the lift capacities will increase by 1,320 kg / 2,910 lb. Lifting capacity of the excavator is limited by machine stability and hydraulic capacity.

Determine maximum load lift from load lift chart displayed in the operator's cab or from load lift chart detailed in the operator's manual supplied with the machine.

Stick 4.70 m / 15'5"

Under-carriage	3.0m 10ft		4.5m 15ft		6.0m 20ft		7.5m 25ft		9.0m 30ft		10.5m 35ft		12.0m 40ft		13.5m 45ft		15.0m 50ft		16.5m 55ft		m ft in		
13.5m t 45ft lb																					10.4*	10.4*	10.8
12.0m t 40ft lb														9.9*	9.9*						10.0*	10.0*	12.2
10.5m t 35ft lb														9.5*	9.5*						9.7*	9.7*	13.2
9.0m t 30ft lb														9.7*	9.7*	9.5*	9.5*				9.0	9.6*	14.1
7.5m t 25ft lb											10.9*	10.9*		21.7*	21.7*	21.5	21.6*				20.5	21.8*	45'11"
6.0m t 20ft lb										13.6*	13.6*		10.1*	10.1*	9.6*	9.6*					8.1	9.6*	14.7
4.5m t 15ft lb										15.1*	15.1*		10.7*	10.7*	22.6*	22.6*	21.3	21.7*			18.4	21.8*	47'11"
3.0m t 10ft lb										16.0	16.6*		10.6	12.0*	20.0	23.2*	16.2	21.8			7.5	9.7*	15.1
1.5m t 5ft lb										14.4	18.5*		9.6	13.1*	18.5	24.9	15.5	21.0			17.0	21.9*	49'5"
0m t 0ft lb										31.7	40.9*		21.3	28.8	17.9	24.3					6.7	9.2	15.4
-1.5m t -5ft lb										14.0	18.9*		9.4	12.9	7.9	10.9					15.2	20.6	50'6"
-3.0m t -10ft lb							18.1	23.0*		30.9	41.8*		20.8	28.3	17.6	23.9					15.7	21.5	48'8"
-4.5m t -15ft lb					23.6*	23.6*	18.3	22.2*		39.9	51.1*		24.7	33.8	20.5	28.0	17.5	23.9			7.3	10.0	14.3
-6.0m t -20ft lb	19.5*	19.5*	24.5*	24.5*	54.9*	54.9*	40.3	49.4*		30.6	41.8*		20.5	28.0	17.5	23.9					16.7	22.7	46'11"
-7.5m t -25ft lb	44.7*	44.7*	56.5*	56.5*	56.6*	56.6*	41.1	46.5*		30.8	40.8*		24.8	33.8	20.7	28.1					8.0	10.8*	13.6
-9.0m t -30ft lb	28.8*	28.8*	28.0*	28.0*	56.6*	56.6*	41.1	46.5*		31.4	38.7*		25.3	32.4*	21.3	26.8*					9.0	10.9*	12.7
-10.5m t -35ft lb	65.9*	65.9*	62.0*	62.0*	50.5*	50.5*	41.8*	41.8*		32.5	34.7*		26.5	28.2*							20.7	24.8*	41'5"
										14.7	15.8*		11.9	13.0*							10.8	10.8*	11.5
										12.6*	12.6*		12.6*	12.6*							24.6*	24.6*	37'2"
										26.8*	26.8*										23.4*	23.4*	31'8"
13.5m t 45ft lb												23.4*	23.4*								10.4*	10.4*	10.8
12.0m t 40ft lb														9.8*	9.8*						10.0*	10.0*	12.2
10.5m t 35ft lb														9.5*	9.5*						22.5*	22.5*	39'6"
9.0m t 30ft lb														9.7*	9.7*	9.5*	9.5*				22.0*	22.0*	43'1"
7.5m t 25ft lb														9.7*	9.7*	21.6*	21.6*				21.5	21.8*	45'11"
6.0m t 20ft lb														11.0*	11.0*	9.7*	9.7*				8.6	9.6*	14.7
4.5m t 15ft lb														10.2*	10.2*	9.6	10.4*				19.4	21.8*	47'11"
3.0m t 10ft lb										13.7*	13.7*		10.8*	10.8*	10.0*	10.0*			8.1	9.7*	7.9	9.7*	15.1
1.5m t 5ft lb										30.2*	30.2*		24.0*	24.0*	21.9	22.4*					18.0	21.9*	49'5"
0m t 0ft lb										15.3*	15.3*		24.4*	24.4*	22.7*	22.7*	17.3	22.2*			7.5	9.8*	15.3
-1.5m t -5ft lb										16.7*	16.7*		13.6	13.9*	11.2	12.1*	17.3	23.3*			17.1	22.1*	50'4"
-3.0m t -10ft lb										36.8*	36.8*		24.5	26.9*	20.4	24.3*	16.9	22.6*			7.3	9.9*	15.4
-4.5m t -15ft lb										15.9	17.8*		10.7	12.7*	8.9	11.3*	16.6	23.0*			16.5	22.5*	50'8"
-6.0m t -20ft lb	20.3*	20.3*	25.4*	25.4*	42.8	49.2*	19.9	20.8*		34.9	39.3*		23.5	28.3*	19.7	25.2*	16.6	23.0*			7.2	10.1*	15.4
-7.5m t -25ft lb	46.3*	46.3*	58.4*	58.4*	56.1*	56.1*	43.7	46.2*		32.9	41.8*		22.2	29.9*	18.8	26.2*				16.3	22.8*	50'6"	
-9.0m t -30ft lb	29.7*	29.7*	27.6*	27.6*	22.5*	22.5*	18.7*	18.7*		14.8	18.8*		9.9	13.5*	8.4	11.6*				16.9	23.7*	48'8"	
-10.5m t -35ft lb	68.1*	68.1*	61.2*	61.2*	49.9*	49.9*	41.3*	41.3*		42.4	51.0*		21.9	29.9*	18.8	25.8*				7.9	10.6*	14.3	
										19.5	22.2*		10.0	13.1*	8.6	10.9*					18.0	24.2*	46'11"
										32.8	40.7*		26.4	34.2*	22.1	29.1*					8.6	10.8*	13.6
										15.1	17.3*		12.2	14.6*	10.3	12.1*					9.8	10.9*	12.7
										15.6*	15.6*		12.7	12.7*							22.3	24.8*	41'5"
										34.3*	34.3*		27.7*	27.7*							10.8*	10.8*	11.5
										12.1*	12.1*										24.6*	24.6*	37'2"
										25.7*	25.7*										23.2*	23.2*	31'8"

Height Can be slewed through 360° In longitudinal position of undercarriage Max. reach * Limited by hydr. capacity

The load values are quoted in tons (t) / lb x 1,000 at stick end (without bucket), and may be swung 360° on firm and even ground. Adjacent values are valid for the undercarriage when in the longitudinal position. Capacities are valid for 750 mm / 30" wide track pads. Indicated loads are based on ISO 10567 standard and do not exceed 75% of tipping or 87% of hydraulic capacity (indicated via *). Without bucket cylinder, link and lever the lift capacities will increase by 1,320 kg / 2,910 lb. Lifting capacity of the excavator is limited by machine stability and hydraulic capacity.

Determine maximum load lift from load lift chart displayed in the operator's cab or from load lift chart detailed in the operator's manual supplied with the machine.

Lift capacities

with mono boom 10.50 m / 34'5", counterweight 16.0 t / 35,270 lb and track pads 750 mm / 30"

Stick 5.80 m / 19'

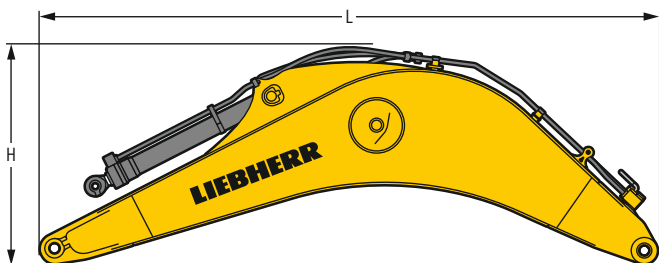
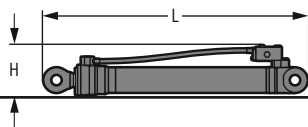
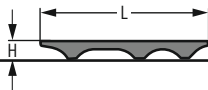
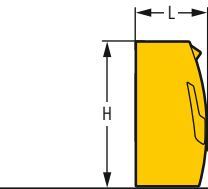
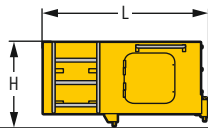
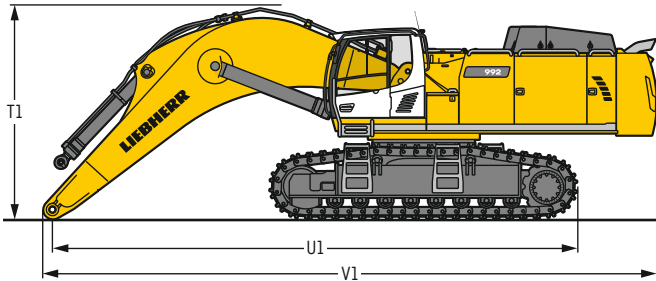
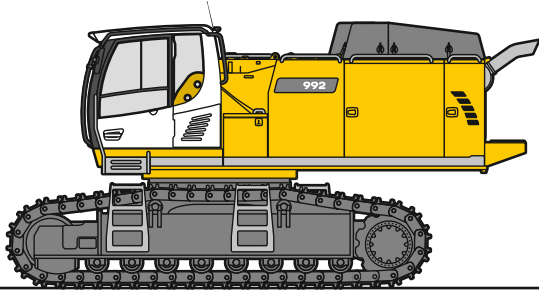
Under-carriage	3.0m 10ft		4.5m 15ft		6.0m 20ft		7.5m 25ft		9.0m 30ft		10.5m 35ft		12.0m 40ft		13.5m 45ft		15.0m 50ft		16.5m 55ft		m ft in			
13.5m t 45ft lb														9.2*	9.2*							9.4*	9.4*	12.3
12.0m t 40ft lb																9.1*	9.1*					9.1*	9.1*	13.5
10.5m t 35ft lb																8.7*	8.7*					9.0*	9.0*	14.5
9.0m t 30ft lb														9.0*	9.0*	8.8*	8.8*					19.9*	19.9*	47.2*
7.5m t 25ft lb														19.7*	19.7*	19.4*	19.4*			8.5	8.9*			15.2
6.0m t 20ft lb														9.5*	9.5*	9.1*	9.1*			8.5	8.9*			15.8
4.5m t 15ft lb														20.8*	20.8*	19.9*	19.9*			8.0	19.7*			51.7*
3.0m t 10ft lb														11.2*	11.2*	10.2*	10.2*			8.3	9.1*			16.2
1.5m t 5ft lb														24.3*	24.3*	22.2*	22.2*			20.8*	20.8*			53*
0m t 0ft lb														14.3*	14.3*	12.3*	12.3*			9.7	10.0*			16.4
-1.5m t -5ft lb														30.9*	30.9*	26.6*	26.6*			20.9	21.9*			53.10*
-3.0m t -10ft lb														15.9*	15.9*	13.4*	13.4*			9.3	10.6*	6.4	8.6	16.5
-4.5m t -15ft lb														34.4*	34.4*	29.1*	29.1*			20.0	23.1*			54.2*
-6.0m t -20ft lb														16.1	17.3*	13.0	14.4*			8.9	11.1*			16.5
-7.5m t -25ft lb														34.7*	37.5*	28.0	31.3*			19.1	24.2*			54'
-9.0m t -30ft lb														15.2	18.3*	12.3	15.2*			8.5	11.5			16.3
-10.5m t -35ft lb														32.9	39.9*	26.7	33.1*			18.4	24.8			53.5*
														14.6	19.0*	11.9	15.8*			9.8	13.3			16.0
														21.3	28.8	17.9	24.2			15.2	20.7			52.4*
														9.6	13.1	8.1	11.1			7.0	9.5			15.5
														20.8	28.3	17.6	23.9			15.1	20.7			50.8*
														9.5	13.0	8.1	11.0							14.8
														30.9	41.9*	24.8	33.9			17.5	23.9			48.6*
														9.6	13.1	8.2	11.2*			8.0	10.4*			14.0
														20.8	28.3	18.0	23.9*			17.8	23.1*			45.7*
														9.9	12.2*					9.2	10.4*			12.9
														21.6	26.0*					20.6	23.3*			41.11*
														12.3	12.6*					10.3*	10.3*			11.5
														26.6*	26.6*					23.0*	23.0*			37.1*
																				9.7*	9.7*			9.6
																				21.5*	21.5*			30.10*
13.5m t 45ft lb														9.1*	9.1*									12.3
12.0m t 40ft lb														20.7*	20.7*									13.5
10.5m t 35ft lb																9.0*	9.0*							14.5
9.0m t 30ft lb																8.8*	8.8*							15.2
7.5m t 25ft lb																19.8*	19.8*			8.8*	8.8*			49.8*
6.0m t 20ft lb																9.6*	9.6*			8.9*	8.9*			15.8
4.5m t 15ft lb																20.9*	20.9*			19.1	19.7*			51.7*
3.0m t 10ft lb																10.2*	10.2*			8.7	9.1*			16.2
1.5m t 5ft lb																27.6*	27.6*			20.9*	20.9*			53*
0m t 0ft lb																14.4*	14.4*			10.1*	10.1*			16.4
-1.5m t -5ft lb																31.2*	31.2*			22.0*	22.0*			53.10*
-3.0m t -10ft lb																16.0*	16.0*			8.2	9.8*	6.8	8.9*	16.5
-4.5m t -15ft lb																34.7*	34.7*			21.1	23.2*			54.2*
-6.0m t -20ft lb																16.9	17.4*			9.4	11.1*			16.5
-7.5m t -25ft lb																36.5	37.8*			20.3	24.3*			54'
-9.0m t -30ft lb																15.2	18.7*			7.7	10.4*			16.3
-10.5m t -35ft lb																34.8	40.1*			16.6	23.8*			53.5*
																15.5	19.1*			8.8	11.9*			16.0
																27.2	34.5*			16.3	23.1*			52.4*
																10.2	13.8*			7.5	10.5*			15.5
																22.2	30.1*			16.3	22.8*			50.8*
																10.1	13.7*			7.8	10.2*			14.8
																22.0	29.9*			17.3	22.8*			48.6*
																10.2	13.2*			8.6	11.8*			14.0
																20.9*	20.9*			19.3	23.6*			45.7*
																9.9	12.0*			9.9	10.4*			12.9
																23.1	25.6*			22.3	23.3*			41.11*
																				10.3*	10.3*			11.5
																				22.9*	22.9*			37.1*
																				9.6*	9.6*			9.6
																				21.2*	21.2*			30.10*

Height Can be slewed through 360° In longitudinal position of undercarriage Max. reach * Limited by hydr. capacity

The load values are quoted in tons (t) / lb x 1,000 at stick end (without bucket), and may be swung 360° on firm and even ground. Adjacent values are valid for the undercarriage when in the longitudinal position. Capacities are valid for 750 mm / 30" wide track pads. Indicated loads are based on ISO 10567 standard and do not exceed 75% of tipping or 87% of hydraulic capacity (indicated via *). Without bucket cylinder, link and lever the lift capacities will increase by 1,320 kg / 2,910 lb. Lifting capacity of the excavator is limited by machine stability and hydraulic capacity.

Determine maximum load lift from load lift chart displayed in the operator's cab or from load lift chart detailed in the operator's manual supplied with the machine.

Dimensions and weights



Basic machine

Track pads	mm/in	500/20"	600/24"	750/30"
Weight with backhoe equipment and HD undercarriage without counterweight	kg/lb	51,050/112,550	51,800/114,200	52,900/116,630
Weight with shovel equipment and HD undercarriage without counterweight	kg/lb	51,150/112,770	51,900/114,420	53,000/116,850
Weight with backhoe equipment and LC-V undercarriage without counterweight	kg/lb	56,400/124,340	57,200/126,100	58,350/128,640

Machine without stick

		HD	LC-V
T1 Mono boom 7.20 m / 23'7"	mm / ft in	4,150 / 13' 7"	4,250 / 13' 11"
Mono boom 8.60 m / 28'3"	mm / ft in	4,500 / 14' 9"	4,550 / 14' 11"
Mono boom 10.50 m / 34'5"	mm / ft in	4,900 / 16' 1"	5,000 / 16' 5"
U1 Mono boom 7.20 m / 23'7"	mm / ft in	10,350 / 33' 11"	10,400 / 34' 1"
Mono boom 8.60 m / 28'3"	mm / ft in	13,450 / 44' 2"	13,400 / 44'
Mono boom 10.50 m / 34'5"	mm / ft in	13,650 / 44' 9"	13,800 / 45' 3"
V1 Mono boom 7.20 m / 23'7"	mm / ft in	11,950 / 39' 2"	11,900 / 39' 1"
Mono boom 8.60 m / 28'3"	mm / ft in	11,700 / 38' 5"	11,850 / 38' 11"
Mono boom 10.50 m / 34'5"	mm / ft in	15,450 / 50' 8"	15,400 / 50' 6"

Cab elevation

		800 mm / 2'7"
L Length	mm / ft in	1,890 / 6'2"
H Height	mm / ft in	925 / 3'
Width	mm / ft in	1,370 / 4'6"
Weight	kg / lb	600 / 1,320

Counterweight

		Std	heavy
L Length	mm / ft in	775 / 2'7"	775 / 2'7"
H Height	mm / ft in	1,595 / 5'3"	1,595 / 5'3"
Width	mm / ft in	3,360 / 11'	3,360 / 11'
Weight	kg / lb	14,100 / 31,090	16,000 / 35,270

Upper protection screen

L Length	mm / ft in	1,960 / 6'5"
H Height	mm / ft in	190 / 7"
Width	mm / ft in	1,110 / 3'8"
Weight	kg / lb	75 / 165

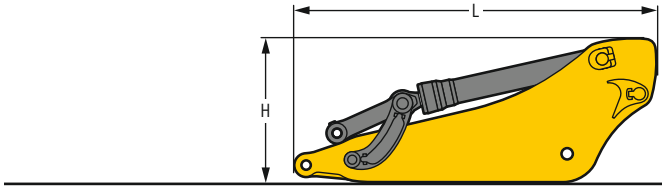
Hoist cylinders (two)

L Length	mm / ft in	2,920 / 9' 7"
H Height	mm / ft in	550 / 1'10"
Width	mm / ft in	400 / 1' 4"
Weight	kg / lb	2 x 1,050 / 2 x 2,320

Mono boom with stick cylinder

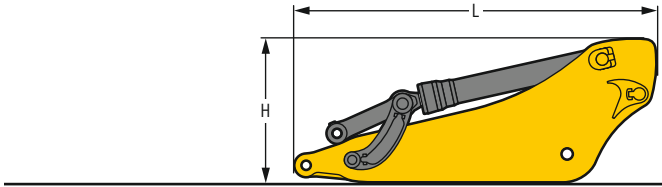
Boom length	m / ft in	7.20 / 23' 7"	8.60 / 28'3"	10.50 / 34'5"
L Length	mm / ft in	7,550 / 24' 9"	8,950 / 29'4"	10,850 / 35'7"
H Height	mm / ft in	2,700 / 8'10"	2,800 / 9'2"	3,050 / 10'
Width	mm / ft in	1,460 / 4' 9"	1,460 / 4'9"	1,460 / 4'9"
Weight	kg / lb	9,500 / 20,940	10,400 / 22,930	11,500 / 25,350

Dimensions and weights



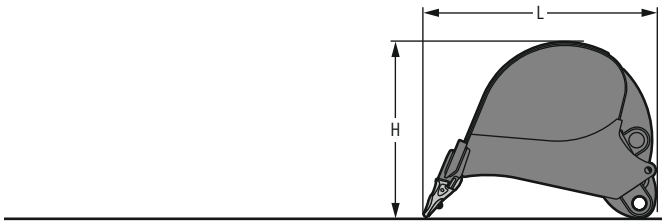
Stick with bucket cylinder

Stick length	m/ft in	2,90/9' 6"	3,30/10'10"	3,80/12' 6"
L Length	mm/ft in	4,050/13' 3"	4,450/14' 7"	4,900/16' 1"
H Height	mm/ft in	1,700/5' 7"	1,650/5' 5"	1,500/4'11"
Width	mm/ft in	900/2'11"	900/2'11"	900/2'11"
Weight	kg/lb	4,450/9,810	4,600/10,140	4,800/10,580



Stick with bucket cylinder

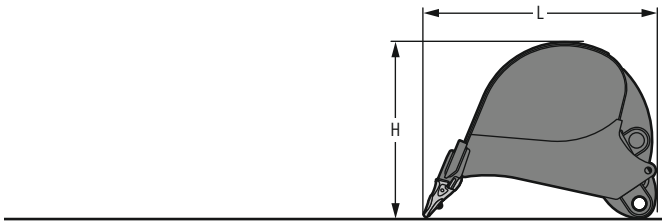
Stick length	m/ft in	4,70/15' 5"	5,80/19'
L Length	mm/ft in	5,800/19'	6,900/22' 8"
H Height	mm/ft in	1,450/4' 9"	1,400/4' 7"
Width	mm/ft in	900/2'11"	900/2'11"
Weight	kg/lb	5,150/11,350	5,100/11,240



Backhoe buckets

Std

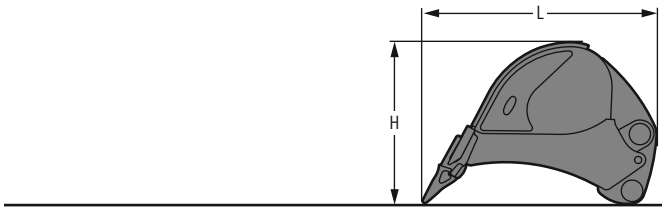
Cutting width	mm/ft in	1,450/4'9"	1,800/5'11"	2,000/6'7"	2,200/7'3"
Capacity	m ³ /yd ³	2,60/3,40	3,60/4,71	4,10/5,36	4,60/6,02
L Length	mm/ft in	2,650/8' 8"	2,650/8' 8"	2,650/8' 8"	2,650/8' 8"
H Height	mm/ft in	2,100/6'11"	2,100/6'11"	2,100/6'11"	2,100/6'11"
Width	mm/ft in	1,500/4'11"	1,850/6' 1"	2,050/6' 9"	2,250/7' 5"
Weight	kg/lb	3,400/7,500	3,900/8,600	4,100/9,040	4,450/9,810



Backhoe buckets

Std

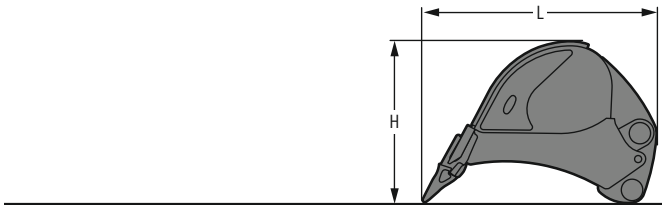
Cutting width	mm/ft in	2,200/7'3"	2,300/7'7"	2,300/7'7"	2,500/8'2"
Capacity	m ³ /yd ³	5,20/6,80	5,60/7,32	6,20/8,11	6,80/8,89
L Length	mm/ft in	2,750/9'	2,750/9'	2,850/9'4"	2,850/9'4"
H Height	mm/ft in	2,150/7'1"	2,150/7'1"	2,150/7'1"	2,150/7'1"
Width	mm/ft in	2,250/7'5"	2,350/7'9"	2,350/7'9"	2,550/8'4"
Weight	kg/lb	4,650/10,250	4,850/10,690	5,050/11,130	5,400/11,910



Backhoe buckets

HD

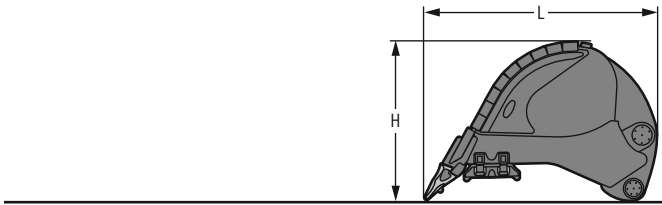
Cutting width	mm/ft in	1,450/4'9"	1,800/5'11"	2,000/6'7"	2,200/7'3"
Capacity	m ³ /yd ³	2,60/3,40	3,60/4,71	4,10/5,36	4,60/6,02
L Length	mm/ft in	2,650/8' 8"	2,650/8' 8"	2,650/8' 8"	2,650/8' 8"
H Height	mm/ft in	2,100/6'11"	2,100/6'11"	2,100/6'11"	2,100/6'11"
Width	mm/ft in	1,500/4'11"	1,850/6' 1"	2,050/6' 9"	2,250/7' 5"
Weight	kg/lb	3,750/8,270	4,350/9,590	4,700/10,360	5,100/11,240



Backhoe buckets

HD

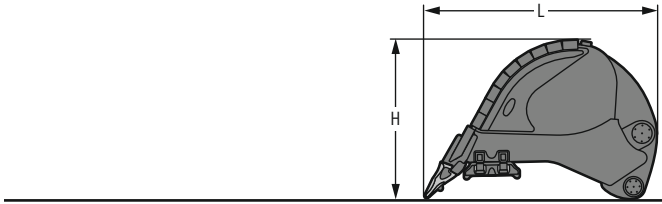
Cutting width	mm/ft in	2,200/7'3"	2,300/7'7"	2,300/7'7"
Capacity	m ³ /yd ³	5,20/6,80	5,60/7,32	6,20/8,11
L Length	mm/ft in	2,750/9'	2,750/9'	2,850/9'4"
H Height	mm/ft in	2,150/7'1"	2,150/7'1"	2,150/7'1"
Width	mm/ft in	2,250/7'5"	2,350/7'9"	2,350/7'9"
Weight	kg/lb	5,300/11,680	5,550/12,240	5,800/12,790



Backhoe buckets

HDV

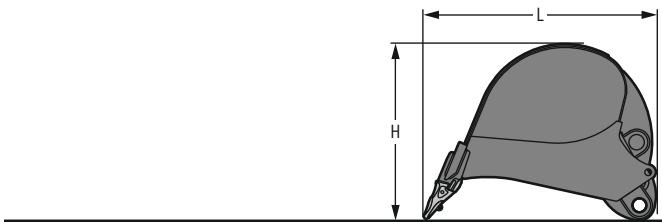
Cutting width	mm / ft in	1,800 / 5'11"	2,000 / 6'7"	2,000 / 6'7"
Capacity	m ³ / yd ³	3.70 / 4.84	4.20 / 5.49	4.70 / 6.15
L Length	mm / ft in	2,650 / 8'8"	2,650 / 8'8"	2,650 / 8'8"
H Height	mm / ft in	2,150 / 7'1"	2,150 / 7'1"	2,150 / 7'1"
Width	mm / ft in	1,850 / 6'1"	2,050 / 6'9"	2,250 / 7'5"
Weight	kg / lb	5,200 / 11,460	5,600 / 12,350	5,850 / 12,900



Backhoe buckets

HDV

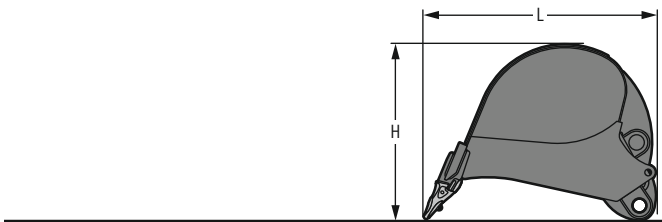
Cutting width	mm / ft in	2,200 / 7'3"	2,300 / 7'7"
Capacity	m ³ / yd ³	5.20 / 6.80	5.70 / 7.45
L Length	mm / ft in	2,750 / 9'	2,750 / 9'
H Height	mm / ft in	2,200 / 7'3"	2,200 / 7'3"
Width	mm / ft in	2,250 / 7'5"	2,350 / 7'9"
Weight	kg / lb	6,250 / 13,780	6,500 / 14,330



Backhoe buckets R 966

Std

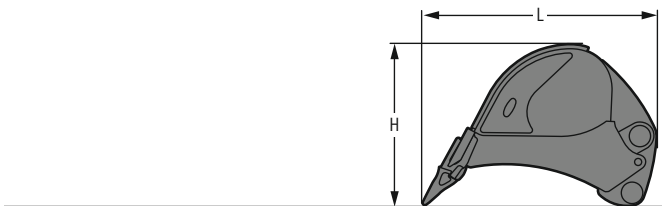
Cutting width	mm / ft in	1,400 / 4'7"	1,700 / 5'7"	1,950 / 6'5"	2,150 / 7'1"
Capacity	m ³ / yd ³	2.00 / 2.62	2.50 / 3.27	3.00 / 3.92	3.50 / 4.58
L Length	mm / ft in	2,300 / 7'7"	2,300 / 7'7"	2,300 / 7'7"	2,300 / 7'7"
H Height	mm / ft in	1,550 / 5'1"	1,550 / 5'1"	1,550 / 5'1"	1,550 / 5'1"
Width	mm / ft in	1,450 / 4'9"	1,750 / 5'9"	2,000 / 6'7"	2,200 / 7'3"
Weight	kg / lb	2,500 / 5,510	2,850 / 6,280	3,100 / 6,830	3,350 / 7,390



Backhoe buckets R 966

Std

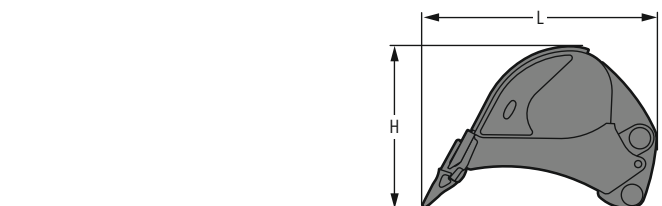
Cutting width	mm / ft in	1,950 / 6'5"	2,150 / 7'1"	2,250 / 7'5"	2,450 / 8'
Capacity	m ³ / yd ³	4.00 / 5.23	4.50 / 5.88	5.00 / 6.54	5.50 / 7.19
L Length	mm / ft in	2,500 / 8' 2"	2,500 / 8' 2"	2,500 / 8' 2"	2,500 / 8' 2"
H Height	mm / ft in	1,800 / 5'11"	1,800 / 5'11"	1,800 / 5'11"	1,800 / 5'11"
Width	mm / ft in	2,000 / 6' 7"	2,200 / 7' 3"	2,300 / 7' 7"	2,500 / 8' 2"
Weight	kg / lb	3,600 / 7,940	3,800 / 8,380	3,950 / 8,710	4,200 / 9,260



Backhoe buckets R 966

HD

Cutting width	mm / ft in	1,450 / 4'9"	1,750 / 5'9"	2,000 / 6'7"	2,200 / 7'3"
Capacity	m ³ / yd ³	2.00 / 2.62	2.50 / 3.27	3.00 / 3.92	3.50 / 4.58
L Length	mm / ft in	2,400 / 7'10"	2,400 / 7'10"	2,400 / 7'10"	2,400 / 7'10"
H Height	mm / ft in	1,600 / 5' 3"	1,600 / 5' 3"	1,600 / 5' 3"	1,600 / 5' 3"
Width	mm / ft in	1,500 / 4'11"	1,800 / 5'11"	2,050 / 6' 9"	2,250 / 7' 5"
Weight	kg / lb	3,100 / 6,830	3,600 / 7,940	3,900 / 8,600	4,300 / 9,480

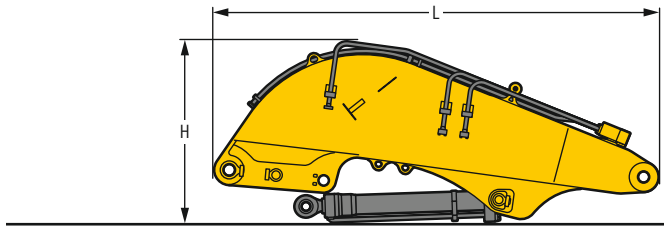


Backhoe buckets R 966

HD

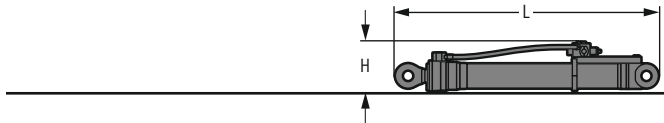
Cutting width	mm / ft in	2,000 / 6'7"	2,200 / 7'3"
Capacity	m ³ / yd ³	4.00 / 5.23	4.50 / 5.88
L Length	mm / ft in	2,650 / 8' 8"	2,650 / 8' 8"
H Height	mm / ft in	1,800 / 5'11"	1,800 / 5'11"
Width	mm / ft in	2,050 / 6' 9"	2,250 / 7' 5"
Weight	kg / lb	4,500 / 9,920	4,850 / 10,690

Dimensions and weights



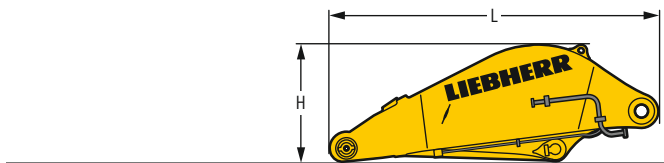
Shovel boom

L	Length	mm / ft in	4,950 / 16'3"
H	Height	mm / ft in	2,050 / 6'9"
	Width	mm / ft in	1,650 / 5'5"
	Weight without crowd cylinder	kg / lb	7,300 / 16,090
	Weight crowd cylinder	kg / lb	2 x 450 / 2 x 990



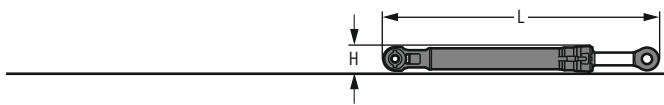
Shovel hoist cylinders (two)

L	Length	mm / ft in	2,920 / 9' 7"
H	Height	mm / ft in	550 / 1'10"
	Width	mm / ft in	450 / 1' 6"
	Weight	kg / lb	2 x 1,100 / 2 x 2,430



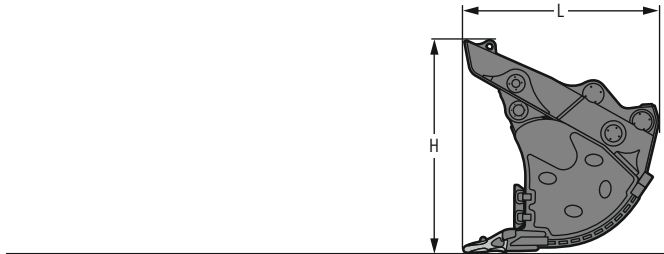
Shovel stick

L	Length	mm / ft in	3,660 / 12'
H	Height	mm / ft in	1,300 / 4' 3"
	Width	mm / ft in	1,800 / 5'11"
	Weight	kg / lb	4,650 / 10,250



Shovel bucket cylinders (two)

L	Length	mm / ft in	3,050 / 10'
H	Height	mm / ft in	450 / 1'6"
	Width	mm / ft in	450 / 1'6"
	Weight	kg / lb	2 x 625 / 2 x 1,380



Front shovels

Cutting width	mm / ft in	2,700 / 8'10"	2,700 / 8'10"	2,700 / 8'10"	2,700 / 8'10"	
Capacity	m ³ / yd ³	5.10 / 6.67	5.40 / 7.06	5.60 / 7.32	6.00 / 7.85	
L	Length	mm / ft in	2,600 / 8' 6"	2,500 / 8' 2"	2,620 / 8' 7"	2,550 / 8' 4"
H	Height	mm / ft in	2,700 / 8'10"	2,440 / 8'	2,470 / 8' 1"	2,465 / 8' 1"
	Width	mm / ft in	2,700 / 8'10"	2,700 / 8'10"	2,700 / 8'10"	2,700 / 8'10"
	Weight					
	Level I	kg / lb	8,450 / 18,630	-	8,750 / 19,290	9,950 / 21,940
	Level II	kg / lb	9,200 / 20,280	-	9,500 / 20,940	10,700 / 23,590
	Level III	kg / lb	10,150 / 22,380	10,600 / 23,370	-	-

Serial equipment

Undercarriage

Lashing eyes
Sprocket with dirt ejector
Track and carrier rollers, sealed and lifetime-lubricated
Travel motor housing protection

Uppercarriage

Access platforms without protruding parts
Anti-skid surfaces
Automatic swing brake lock
Centralized lubrication system (automatic)
DEF tank lockable access hatch
Engine hood with gas spring opening
Extended tool set including tool box
Handrails
Liebherr Power Efficiency - Engine Control
Lockable fuel tank cap with padlock
Lockable service doors
Lockable storage box
Main switch, accessible from ground level
Pre-heating system for fuel
Protection grid on radiator fan
Sound insulation
Swing-out radiators
Windshield washer fluid tank

Hydraulic system

Dedicated swing circuit
Filter with integrated fine filters
Hydraulic pressure measuring ports
Hydraulic tank shut-off valve
Magnetic rod
Pressure accumulator for controlled lowering of equipment with engine turned off

Engine

Air filter with automatic dust ejector
Automatic engine idling / speed increase, controlled via joystick sensors
Common-Rail injection system
Exhaust gas after-treatment system - SCR
Fixed geometry turbocharger
Fuel fine filter
Fuel pre-filter and water separator
Fuel priming pump
Intercooler
Power Pack US EPA Tier 4 Final
Stepless adjustable engine speed

Cab

9" multifunction color touchscreen
Air conditioning, automatic, tri-zone, controlled via display
Armrests adjustable in length, height and inclination
Bottle holder
Cab door sliding windows
Cigarette lighter
Coat hook
DEF consumption on touchscreen
DEF level on touchscreen
Electric socket in cabin (12V)
Electric socket in cabin (24V)
Emergency hammer
Engine oil level on touchscreen
Footrest
Fuel consumption on touchscreen
Fuel level on touchscreen
Impact resistant roof window
Impact resistant two-piece windscreen
Interior lighting
Laminated right hand side window
LiDAT Plus (Liebherr data transfer system)*
Mobile phone storage net
Modetronic
Movement priority between swing and boom, adjustable via touchscreen
Rain hood over front window opening
Rearview mirror
Rear view monitoring camera
Rear view monitoring camera distance gauge
Rear window emergency exit
Right hand side view monitoring camera
Roll-down sun blinds for windscreen and roof window
Rubber floor mat, fixed on floor and removable
Storage box
Storage nets
Storage spaces
Tilttable console left
Tinted windows
Visco-elastic damping
Windscreen wiper and washer
Work mode selector

Equipment

Anti-drift system boom cylinders
Anti-drift system stick cylinder
Boom cylinders regeneration
Pipe fracture safety valve for stick cylinder
Pipe fracture safety valves for boom cylinders
Pivot points made of cast steel
SAE split flanges on high pressure lines
Stick bottom protection
Stick cylinder regeneration

* optionally extendable after one year

Equipment standard / option

Undercarriage

Chain guide 3 pieces	●
Chain guide 4 pieces	+
Chain guide full length	+
Reinforced cover and base plate for undercarriage center section	+
Reinforced cover plate for center section (LC-V undercarriage)	+
Screws protection for sideframe (LC-V undercarriage)	+
Special painting	+
Steps	●
Track pads double grouser 500 mm / 20°, chamfered	+
Track pads double grouser 600 mm / 24°, chamfered	●
Track pads double grouser 750 mm / 30°, chamfered	+
Track pads double grouser 900 mm / 35°, chamfered	+
Travel drive gearbox protection	+
Undercarriage HD	+
Undercarriage LC-V	+
Undercarriage protection plate for drop-ball application	+

Uppercarriage

Air pre-filter with cyclonical dust trap	+
Boxing ring	+
Catwalks left and right	●
Catwalk wide with railing	+
Counterweight heavy 16.0 t / 35,270 lb	+
Counterweight standard 14.1 t / 31,090 lb	●
Electric socket on uppercarriage (24 V)	+
Filter for hydraulic hammer return flow	+
Fixed cab riser 800 mm / 27"	+
Headlight on uppercarriage, lateral right, LED+, 1 piece	+)
Headlights on uppercarriage, front, LED, 2 pieces, protections included	●)
Headlights on uppercarriage, front, LED+, 2 pieces, protections included	+)
Headlights on uppercarriage, rear, LED+, 2 pieces	+)
Lighting for tank area	+)
Lighting for uppercarriage access	+)
Radiator fine mesh protection grid	+
Reversible fan drive	+
Skyview 360°	+
Special painting	+
Swing ring and lubrication hoses protection	+
Tank refilling pump fuel	+
Wiggins coupling for fuel	+

Hydraulic system

Bypass filter for hydraulic oil	+
Liebherr hydraulic oil	●
Liebherr hydraulic oil, adapted for extreme climate conditions	+
Liebherr hydraulic oil, biodegradable	+

Engine

Automatic engine shutdown after idling	+
Engine shut-down with overrun	+
Lighting for engine compartment	+)



Cab

3" seat belt with retractor, orange color	●
4-points seat belt	+
Acoustic travel alarm deactivatable	+
Auxiliary heater programmable	+
Bottom windscreen wiper	+
Coming / Leaving Home	+ ¹⁾
Cool box (12V)	+
Dark tinted windows	+
Electrically adjustable and heated outside rear-view mirrors	+
Electronic immobilizer	+
Emergency stop in cab	+
FGPS front guard tiltable	+
Fire extinguisher	+
First-aid box	+
FOPS top guard	+
Handrests elevated for joysticks	+
Headlights on cab, front, LED, 2 pieces	● ¹⁾
Headlights on cab, front, LED+, 2 pieces	+ ¹⁾
Headlights on cab roof, front, LED+, 2 pieces	+ ¹⁾
High pressure circuit switchable on pedals or mini-joystick	+
High pressure circuit with Tool Control (20 attachment adjustments on display)	+
Lighting for cabin access	+ ¹⁾
Luminosity control (LED+ headlights)	+ ¹⁾
Medium pressure circuit	+
Mini-joysticks proportional	+
Operator seat Comfort	●
Operator seat Premium	+
Overload warning system	+
Radio Comfort	+
Radio pre-installation	●
Roof sun shield	+
Roof window wiper	+
Rotating beacon on cabin, LED, 1 piece	+
Shortcut button on joystick configurable	●
Special painting	+
Sun visor	+



Equipment

Boom bottom protection	+
Boom cylinder rods protection	+
Bucket cylinder rod protection	+
Bucket Fill Assist	+
Centralized lubrication extended for connecting link	+
Floating boom	+
Headlights on boom, LED, 2 pieces, protections included	● ¹⁾
Headlights on boom, LED+, 2 pieces, protections included	+ ¹⁾
Mono boom 7.20 m / 23'7"	+
Mono boom 8.60 m / 28'3"	+
Mono boom 10.50 m / 34'5"	+
Preparation for ripper tooth	+
Quick coupler SWA 92 hydraulic	+
Shovel boom 4.60 m / 15'1"	+
Shovel stick 3.30 m / 10'10"	+
Special painting	+
Stick 2.90 m / 9'6"	+
Stick 3.30 m / 10'10"	+
Stick 3.80 m / 12'6"	+
Stick 4.70 m / 15'5"	+
Stick sealed 5.80 m / 19'	+

● = Standard, + = Option

¹⁾ Equipment not individually available, but only as predefined packages

Non-exhaustive list, please contact us for further information.

Options and / or special equipment, supplied by vendors other than Liebherr, are only to be installed with the knowledge and approval of Liebherr in order to retain warranty.

The Liebherr Group



Global and independent: more than 70 years of success

Liebherr was founded in 1949. With the development of the world's first mobile tower crane, Hans Liebherr laid the foundations of a successful family business which today comprises more than 140 companies on all continent and employs nearly 50,000 people. The parent company of the Group is Liebherr-International AG in Bulle (Switzerland), whose associates are exclusively members of the Liebherr family.

Technology leadership and pioneering spirit

Liebherr regards itself as a pioneer. This spirit has enabled the company to make a decisive contribution to the technological history of many industries. Today, employees around the world still share the courage of the company founder to take new paths. They are all united by a passion for technology and fascinating products and the determination to perform outstanding work for their customers.

Widely diversified product portfolio

Not only is Liebherr one of the biggest construction equipment manufacturers in the world, it also provides high-quality, user-oriented products and services in a wide range of other areas. The product portfolio includes the segments earthmoving, material handling technology, deep foundation machines, mining, mobile and crawler cranes, tower cranes, concrete technology, maritime cranes, aerospace and transportation systems, gear technology and automation systems, refrigeration and freezing, components and hotels.

Customized solutions and maximum customer benefit

Liebherr solutions are characterized by maximum precision, outstanding implementation and exceptional longevity. Its mastery of key technologies enables the company to offer its customers customized solutions. For Liebherr, customer focus does not end with the product; it also encompasses a wide range of services that make a real difference.

www.liebherr.us

WARNING

Breathing diesel engine exhaust exposes you to chemicals known to the State of California to cause cancer and birth defects or other reproductive harm.

- Always start and operate the engine in a well-ventilated area.
- If in an enclosed area, vent the exhaust to the outside.
- Do not modify or tamper with exhaust system.
- Do not idle the engine except as necessary.

For more information go to www.P65warnings.ca.gov/diesel.

WARNING

This product can expose you to chemicals including lead and lead compounds, which are known to the State of California to cause cancer and birth defects or other reproductive harm.

For more information go to www.P65warnings.ca.gov.

Liebherr USA, Co.

Construction Equipment Division • 4800 Chestnut Avenue • Newport News, VA 23607, USA • Phone +1 (757) 240 4250
construction.usa@liebherr.com • www.liebherr.us • www.facebook.com/LiebherrConstruction