

 **HD HYUNDAI**

**HX17Az | HX35Az | HX40A | HX48Az | HX60A | HX85A**

**The New Standard in Compact Equipment**



\* Photo may include optional equipment.

**building a comfortable tomorrow**

# THE NEW STANDARD IN COMPACT EXCAVATORS

The new HX-A series compact excavators feature bigger, better cabs and deliver reliable power and performance with minimal downtime. They set the new standard in what's standard for compact excavators.\*

## Hi MATE telematics

Standard on all models

Five years free. Tracks service intervals, machine location, machine performance, and other data that allows you to run your fleet more intelligently and more efficiently and helps you stay on top of service needs and operating conditions.

## Passcode security

Standard on HX17Az - HX48Az

Helps protect your investment and prevent unauthorized use or theft, which reduces owning and operating costs.

## Adjustable hydraulic flow control

Standard on HX35Az - HX85A

Easily set optimum flow range for multiple attachments and switch between them.

## Two-way diverter valve

Standard on HX17Az - HX60A

Two attachments can be connected to the machine at the same time in order to divert flow from one attachment to the other.

## Cowl and service door

Standard on all models

Designed for easy access for daily service.

## Load-sensing hydraulics

Standard on HX40A, HX48Az and HX85A

Deliver reliable performance and efficiency by simplifying operation, reducing fuel consumption and putting less strain on hydraulic systems over the life of the machine by applying only as much energy as is needed.

## Fuel sight glass at entry

Standard on HX35Az - HX48Az

Lets operators know on entry if they need to add fuel so they can keep working longer.



# HX17Az | HX35Az | HX40A | HX48Az | HX60A | HX85A



See these new standard features in action.  
Scan here for the video play list.



## Boom, arm and bucket cylinder guards

Standard on all models

Protecting the business end of your investment.

## Dozer blade float

Standard on all models

Whether using rigid or angled dozer blades, standard blade float puts automatic down-force on the blade to ensure consistent backfilling and grading performance.

## Hydraulic quick coupler

Standard on all models

Easily swap between buckets and attachments, without getting out of the cab, with no tinkering with pins. Swap the bucket or attachment and get back to work.

## Integrated utility lifting hook

Standard on all models

Make lifting, craning and placing easier with standard integrated lifting hook built right into the quick coupler. No more fumbling for the right place to attach straps or chains.

\* Some standard features on select models only.  
Refer to the specific product spec sheets for details.

# EVERYTHING YOU EXPECT FROM HYUNDAI AND MORE

The HX-A series compact excavators come with Hyundai's industry-leading warranty and automotive-style comfort and convenience features, backed by our expanding dealer network.



## HX17Az

COMING SOON!

**Net power** Kubota D902  
16.0 hp (11.9 kW) at 2,400 rpm  
**Operating weight** canopy  
4,370 lb (1,980 kg)  
**Bucket breakout force**  
3,668 lbf (1,664 kgf)  
**Max dig depth**  
8 ft (2.44 m)



## HX48Az

**Net power** Yanmar 4TNV88C  
37.7 hp (28.1 kW) at 2,200 rpm  
**Operating weight** cab  
11,200 lb (5,080 kg)  
**Bucket breakout force**  
8,409 lbf (3,814 kgf)  
**Max dig depth**  
11 ft 6 in (3.50 m)



## HX35Az

**Net power** Kubota D1703  
24.2 hp (17.8 kW) @ 2,200 rpm  
**Bucket breakout force**  
7,229 lbf (3,279 kgf)

**Operating weight** cab  
8,930 lb (4,050 kg)  
**Max dig depth**  
10 ft 3 in (3.14 m)



# HX17Az | HX35Az | HX40A | HX48Az | HX60A | HX85A

## HX40A



**Net power** Yanmar 4TNV88C  
37.7 hp (28.1 kW) at 2,200 rpm  
**Bucket breakout force**  
9,835 lbf (4,461 kgf)

**Operating weight** cab  
9,680 lb (4,390 kg)  
**Max dig depth**  
11 ft 3 in (3.42 m)



Scan QR codes to download spec sheets for each model

## HX60A



COMING SOON!

**Net power** HDI DM02VB  
63.0 hp (47.0 kW) at 2,400 rpm  
**Bucket breakout force**  
9,461 lbf (4,292 kgf)

**Operating weight** cab  
13,580 lb (6,160 kg)  
**Max dig depth**  
12 ft 4 in (3.77 m)

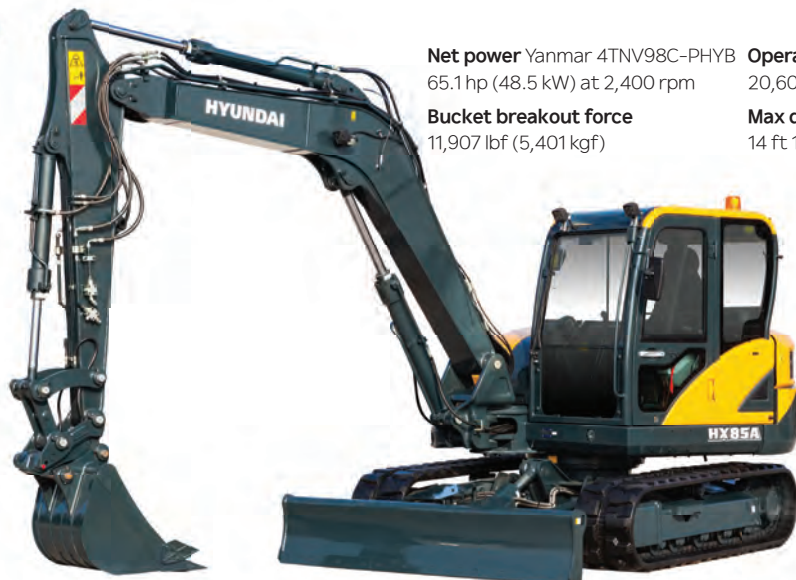


## HX85A



**Net power** Yanmar 4TNV98C-PHYB  
65.1 hp (48.5 kW) at 2,400 rpm  
**Bucket breakout force**  
11,907 lbf (5,401 kgf)

**Operating weight** cab  
20,608 lb (9,346 kg)  
**Max dig depth**  
14 ft 1 in (4.29 m)





# PRODUCTIVITY AND FUEL EFFICIENCY

A host of standard features on the Hyundai HX-A series excavators – even beyond the standard quick coupler and standard dozer blade – will help you put these compact powerhouses to work.



\* Photo may include optional equipment



---

### Reliable, fuel-efficient engines

The Hyundai HX-A series compact excavators are powered by proven engines built by industry leaders to offer the best in reliability and fuel efficiency.

---

### More standard features

From the standard quick coupler and lift hooks on the business end of the machines to the easy-open cowl and service door on the back, and everything in between, you get more standard features from Hyundai – features that will cost you extra from the competition.

---

### Built to last

The robust upper and lower frame structures have been meticulously designed, strenuously engineered, and field-tested to handle the toughest jobsite environments. In addition to carrying over key durability features from previous Hyundai compact excavator models, such as long-life pins and bushings, extended lube intervals, wear-resistant shims and integrated preheating systems, the new HX-A series machines incorporate new protections for hydraulics and even better service access to keep them up and running longer.

---

### Dozer blade float Standard on all models

Dozer blade float automatically applies measured downward force on the blade. This helps the operator grade and backfill more accurately and consistently.

---

### Auto-shift travel speed Standard on all models

Standard auto-shift travel speed provides a seamless transition between high and low travel speeds, increasing efficiency and productivity by allowing the operator to quickly travel from task to task on the worksite.

---

### Auto engine idle Standard on all models

Auto engine idle optimizes fuel efficiency by reducing rpms when the equipment is not in use.



# MODELS AND FEATURES FOR EVERY APPLICATION

Whatever your application or jobsite conditions, there is a Hyundai compact excavator to meet the demands of the work at hand.



\* Photo may include optional equipment.



## HYDRAULICS MADE SMARTER

### Boom, Arm And Bucket Cylinder Guards

Standard boom, arm and bucket cylinder guards shield the hydraulic cylinders from damage caused by debris or other external factors, protecting the business end of your investment and reducing downtime and repair costs.



### Improved Hydraulic Hose Layout

The layout of the hydraulic hoses on the HX-A series compact excavators has been optimized for greater efficiency and easier maintenance access.

### Load-Sensing Hydraulic System

The HX40A, HX48Az and HX85A come standard with a load-sensing hydraulic system that simplifies operation, reducing fuel consumption and putting less strain on hydraulic systems over the life of the machine by delivering only as much flow and pressure as needed.

### Two-Way and Four-Way Auxiliary Line with Proportional Control

Hyundai Construction Equipment's new HX line of compact excavators introduces advanced features like two-way and four-way auxiliary lines with proportional control. These proportional controls offer improved speed control, enhancing operator convenience during time-consuming tasks. Operators can easily switch this function using the pedal valve in the cluster setting menu. The roller switch integrated into both joysticks enables efficient operation of multi-function work tools, streamlining equipment operation.

### ▶ ROPS cabin or canopy

Our larger HX60A and HX85A come with ROPS cabins, and the ultra-compact HX17Az is a canopy machine. Depending on the climate and applications you work in, you can choose enclosed cabin or canopy versions of our other models. The cabin structure of these machines incorporates low-stress, high-strength steel to meet respective ISO ROPS and FOG certifications.



\*HX17Az canopy shown



\*HX85A cab shown

### ▶ Zero tail-swing machine

The HX17Az, HX35Az and HX48Az are true zero tail-swing excavators, which makes them great machines for working in confined or busy spaces.



### ▶ Variable undercarriage

The undercarriage on the HX17Az can be adjusted between 2' 6" and 3' 5" (760 to 1,070 mm) to facilitate working in extra-tight spaces – even allowing passage through a standard doorway.

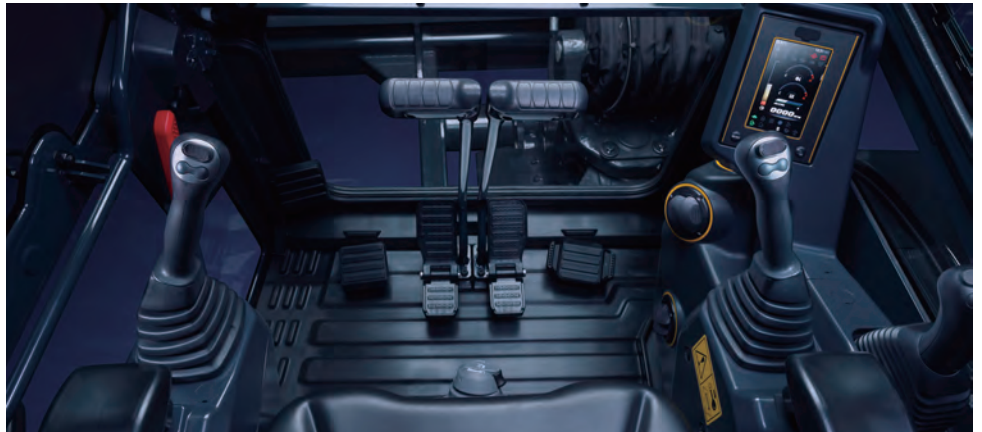






# GREATER COMFORT, GREATER CONTROL

The cabs on the new compact excavators were designed with operator comfort and convenience in mind, with more space and more glass for better visibility to the worksite. Improved ergonomics and advanced features allow operators to work with greater ease and efficiency. The more spacious interior design not only makes operators more comfortable, but also improves safety by ensuring they can work for extended periods with less fatigue.



\* Cab shown is for models HX35Az – HX48Az only

## › Conveniently clustered monitor and switches

The new 5-inch LCD panel on these machines allows you to easily control key excavator settings, such as auxiliary flow rate adjustment. It also lets you monitor and manage component life cycles and daily maintenance. The central layout of the monitor, surrounded by intuitive switches and controls, facilitates quick and easy access to critical functions and operations.



\* Photo shown is for HX17Az – HX48Az

## › Pattern-change valve is now in the cab

Now, it's easier than ever to accommodate the preferences of different operators who use your compact excavators because the valve used to switch between ISO and SAE patterns is now located in the cab. Each new operator can climb in and get right to work.

## › Heat and A/C in the cab

Today's HX-A series compact excavator cabs are equipped from the factory with integrated heating and air conditioning, providing a comfortable operating environment regardless of outside conditions.



# SAFETY FOR YOU AND THE EXCAVATOR

No one wants jobsite accidents. That's why safety – for the machine and the operator – is always a priority. This is evident in new and continuing features on the Hyundai HX-A series compact excavators.



\* Photo may include optional equipment.



### Passcode security

A password-protected ignition key, standard on the HX17Az through the HX48Az, prevents the engine from starting without the correct key. This helps protect your investment and prevent unauthorized use or theft, which reduces owning and operating costs. Additionally, GPS tracking is available in conjunction with Hyundai Hi MATE.



### Emergency engine stop switch

In the event of an emergency, with the push of a button, the engine will immediately shut off, ensuring the safety of the operator and others working near the machine.



### LED work lights and beacon

A safety beacon and powerful LED work lights that provide visibility to the work area are standard on the HX-A series machines. Optional rear LED lighting is also available.



### Travel alarm

A travel alarm alerts workers and pedestrians when the machine is moving.



### Safety belt warning

A warning alarm sounds as a reminder if the operator has not secured their seatbelt.

# EASE OF SERVICE MEANS MORE UPTIME

## ▶ Tilting cabin for easy service access

The tilting cabin allows easy access to internal components, such as the swing motor, reducing the downtime required for maintenance.



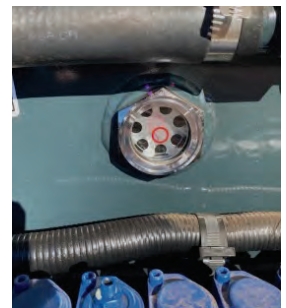
## ▶ Rear cowl and service door

The rear cowl and service door design allows for easier access to speed daily service routines.



## ▶ Hydraulic fluid sight glass

On the HX35Az – HX48Z, the hydraulic fluid level indicator has been relocated for easier viewing.



## ▶ Two-piece dozer blade hose

The HX-A series compact excavators have a two-piece hydraulic hose for the dozer blade. These two hose pieces can be replaced independently, which makes maintenance faster and less costly.



## ▶ Fuel sight glass at entry

New on the HX35Az, HX40A and HX48Az, the fuel sight glass is now located on the outside of the cab, so operators will know at a glance if they need to add fuel. This lets them keep working longer.





# CONVENIENT, EASY AND VALUABLE

Access to the Hi MATE mobile app, HD Hyundai's proprietary GPS-based remote management system, is free for five years for all Hyundai HX-A series compact excavators. Hi MATE enables users to remotely evaluate machine performance, access diagnostic and maintenance schedules and records, and verify machine locations at the touch of a button.



\* Photo may include optional equipment.

# Hi MATE

## BENEFITS



### Boost Productivity

With Hi MATE, you can quickly view critical information such as working hours vs. idling hours, service intervals, machine location and performance data that can help you boost productivity for your fleet.



### Protect from Theft

Hi MATE helps you protect your machines from theft or unauthorized use by alerting you if a machine moves outside the geo-fence boundaries you set.



### Log in from Anywhere

You can log in to the Hi MATE mobile application to check on your machines whenever and wherever you are.

# The New Standard in Compact Equipment



## BACKED BY HYUNDAI

### Built to perform

HX-A series compact excavators, like all Hyundai equipment, are built to perform, day in and day out, to meet our customers' toughest expectations and quality standards.

### North American dealer network

Hyundai construction equipment is sold and serviced through a growing network of more than 80 dealerships operating from nearly 200 locations across the United States and Canada.

### Support

When you purchase a Hyundai machine you know your investment is as solid as the steel on our buckets and booms. You can count on the Hyundai difference.

- Products packed with value – with more standard features on every machine.
- Industry-leading standard warranty of 3 years or 3,000 hours, plus a 5-year, 10,000-hour structural warranty, with the option to add Hyundai Extend, an extended-warranty program.
- Knowledgeable, trained and experienced service personnel, backed by our solutions-focused field support team.
- Parts support, with an average 98-percent fill rate for parts orders submitted by our dealers on behalf of customers like you. Our warehouse in suburban Atlanta carries more than \$43 million in parts inventory.

