

Fx375 Qtv



Fx375 Qtv

Designed for excavators in the 28 to 44 ton range, the Fx375 Qtv is a hard hitting hammer that has no rivals. Incorporating the latest in design technology, the Fx375 Qtv hammer improves day-to-day performance, offering less maintenance and downtime, smoother operation, superior strength and the highest level of reliability.

Operators appreciate performance features that include a new valve design to reduce hydraulic fluid temperatures. A redesigned piston enhances surface contact to working steel, while a larger bushing surface keeps it aligned for greater impact. A replaceable cylinder liner increases tool life and reduces time-consuming maintenance.

The Fx375 Qtv offers improved durability, with features that include a square, mono-block body design for superior strength. The elimination of thru-bolts also reduces maintenance and failure. Excavators equipped with quick couplers can take advantage of our Floating Top-Mount Boss mounting system. This incorporates standard mounting hardware while meeting "OEM Pin Centers" for specific carrier mounting eliminating the need for specific OEM top caps.

All Furukawa hammers come complete with exclusive Pro-Pak for ease of installation. The Pro-Pak includes hose whips, mounting hardware, standard working steel and tool kit with operating manual at no additional charge.

Features and Benefits:

- Increased hydraulic flow range for use on a wider range of carriers
- Mono-block design eliminates a separate cylinder, fronthed and thru-bolts
- Improved Dust Intake Prevention system increases reliability
- Replaceable cylinder liner with concentric porting keeps piston aligned for maximum impact performance
- Improved valve design reduces hydraulic fluid temperatures which increases performance
- Square body design for superior strength
- 3-point sealing system prevents internal contamination
- Redesigned piston increases surface contact to working steel
- Improved dampening system keeps breaker properly secure in cradle to reduce wear
- Qtv cradle for improved protection, sound suppression and dampening
- Increased and improved lubrication to critical components
- Longer thrust bushing for increased internal alignment also insures direct impact with piston

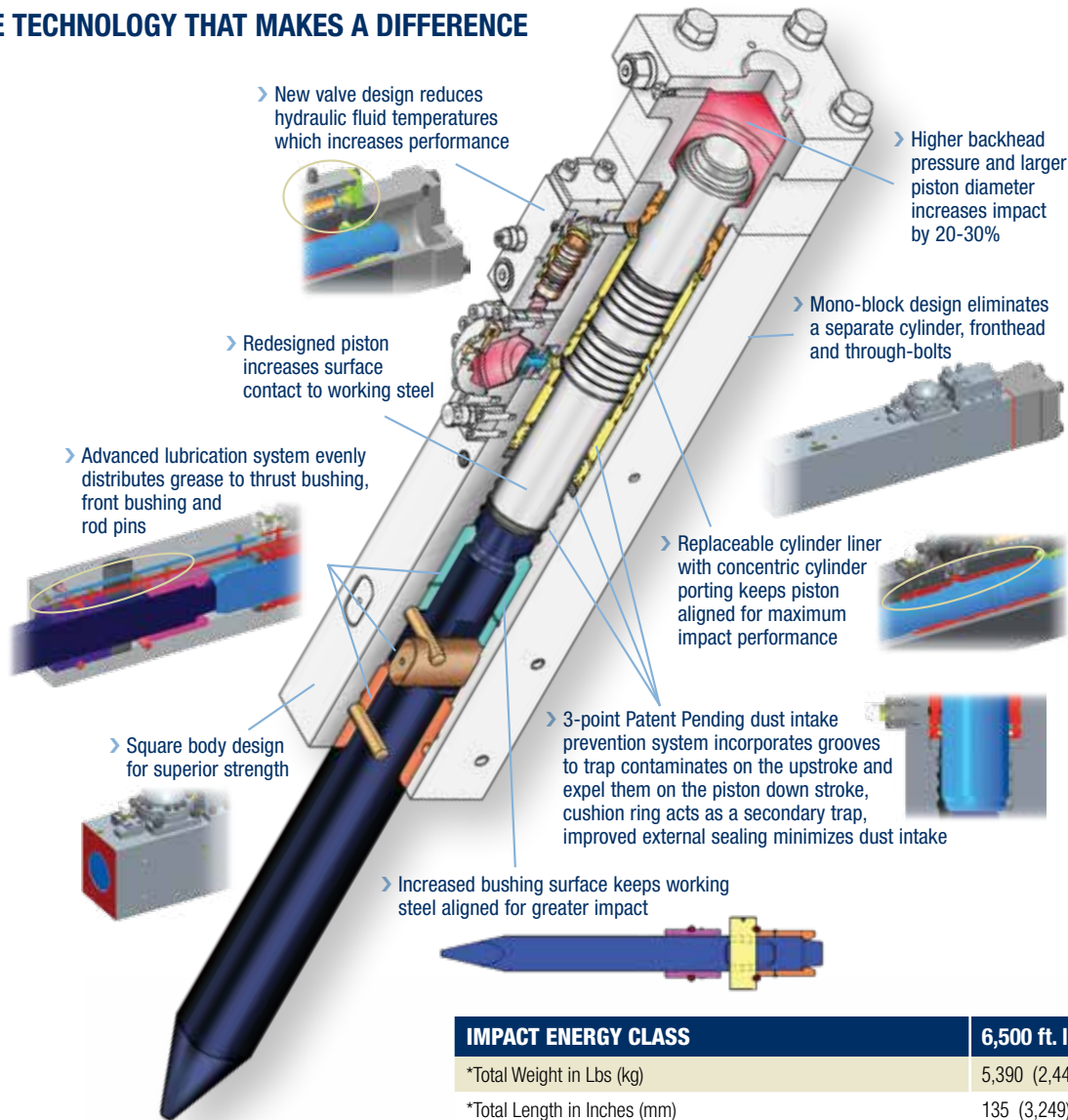
FxSERIES

- NO** torquing of Thru-Bolts.
- NO** broken Thru-Bolts.
- NO** downtime due to Thru-Bolts.

Why? **NO THRU-BOLTS.**

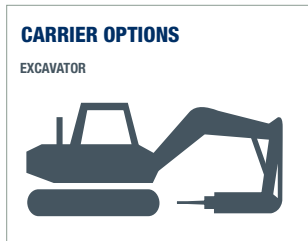


INNOVATIVE TECHNOLOGY THAT MAKES A DIFFERENCE



IMPACT ENERGY CLASS	6,500 ft. lbs.
*Total Weight in Lbs (kg)	5,390 (2,444)
*Total Length in Inches (mm)	135 (3,249)
Working Steel	
Diameter in Inches (mm)	6.10 (155)
New Length of Steel Measured from Front Face in Inches (mm)	31.89 (810)
Replaceable Steel Length, Measured from Front Face in Inches (mm)	19.30 (490)
General Specifications	
Adjustable Blows Per Minute (BPM)	300 ~ 450
Acceptable GPM Range (LPM)	45 ~ 69 (170 ~ 261)
Acceptable PSI Range (Bar)	2,320 ~ 2,610 (160 ~ 180)
85 dB(A) @	~ 19 meters
Recommended Carrier Range in U.S. Tons (tonnes)	28 ~ 44 (25 ~ 40)
Carrier Options	■

***Note:** Total weight and total length include standard working steel and universal top cap less mounting pins and bushings.



www.frdusa.com

CORPORATE HEADQUARTERS
711 Lake Street, Kent, OH 44240
Ph: 330-673-5826
Fax: 330-677-1616
Toll Free: 1-800-527-2282

SOUTHEAST SALES AND SERVICE FACILITY
155 Dexter Road
Spartanburg, SC 29303
Ph: 864-541-0125

WEST COAST SALES AND SERVICE FACILITY
7730 Security Circle
Reno, NV 89506
Ph: 775-260-7366