



Fx275 Qtv

The most popular in the Fx Series line-up, the Fx275 Qtv made for excavators in the 21 to 33 ton range, and is a brute among hammers. Built to take punishment, the Fx275 Qtv hammer can handle road removal, reduction of bridge pylons, foundation demolition, and the extremes of quarry applications. Incorporating the latest in design technology, it also offers less maintenance and downtime and smoother operation.

The new square mono-block body design eliminates thru-bolts increasing durability and reducing maintenance and failure due to broken bolts. An increased hydraulic flow range allows the hammer to be used on a wider range of carriers for greater inventory utilization.

Operators appreciate performance features that include a new valve design to reduce hydraulic fluid temperatures. A redesigned piston enhances surface contact to working steel, while a larger bushing surface keeps it aligned for greater impact. A replaceable cylinder liner increases tool life and reduces time-consuming maintenance. A higher back head pressure and large piston diameter increase the impact energy by up to 20-30% over previous models. The one-piece enclosure reduces noise levels making it a perfect choice for reduced noise applications.

All Furukawa hammers come complete with exclusive Pro-Pak for ease of installation. The Pro-Pak includes hose whips, mounting hardware, standard working steel and tool kit with operating manual at no additional charge.



FxSERIES

- NO** torquing of Thru-Bolts.
- NO** broken Thru-Bolts.
- NO** downtime due to Thru-Bolts.

Why? **NO THRU-BOLTS.**

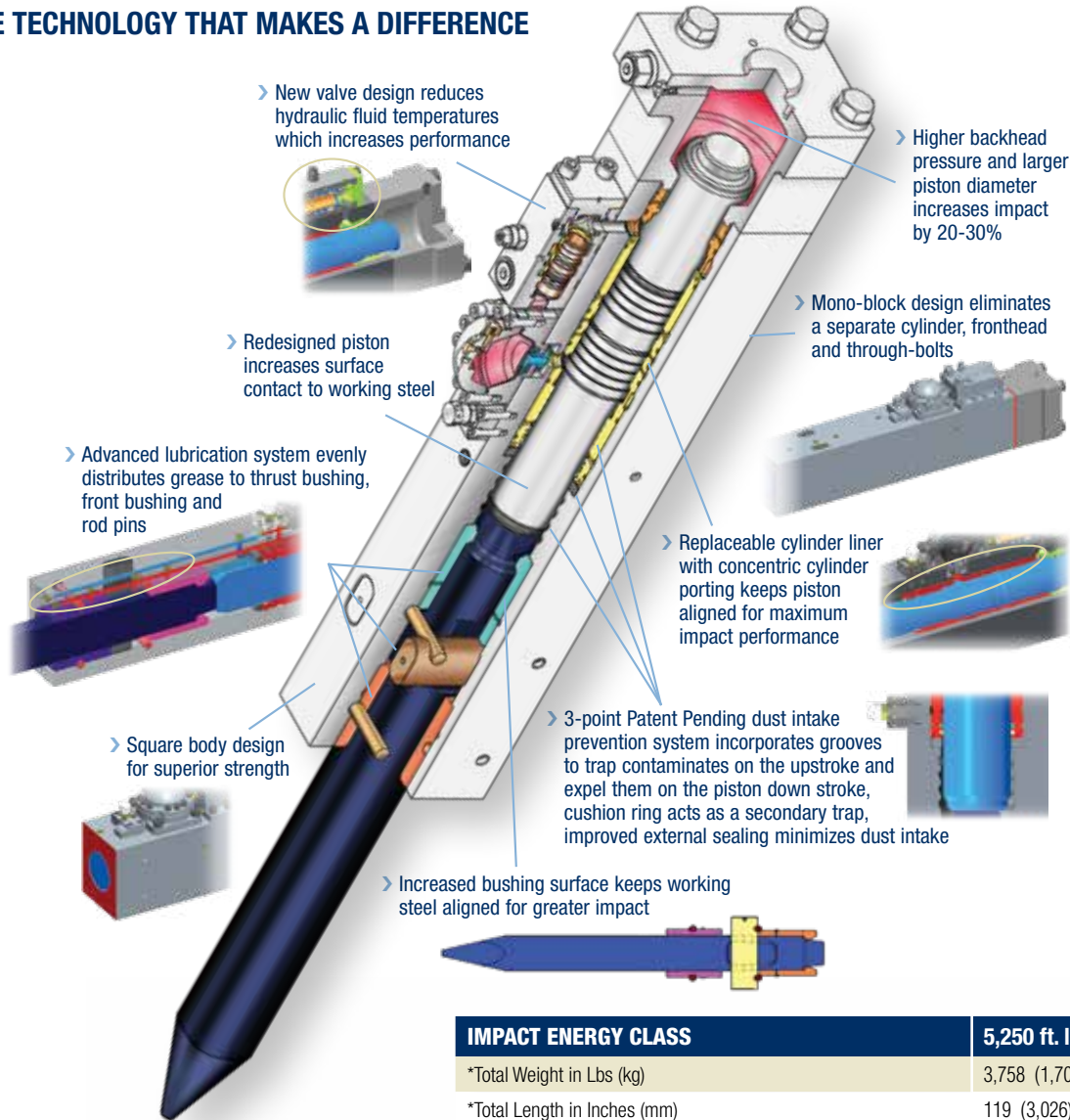
Fx275 Qtv

Features and Benefits:

- Increased hydraulic flow range for use on a wider range of carriers
- Mono-block design eliminates a separate cylinder, fronthead and thru-bolts
- Improved Dust Intake Prevention system increases reliability
- Replaceable cylinder liner with concentric porting keeps piston aligned for maximum impact performance
- Improved valve design reduces hydraulic fluid temperatures which increases performance
- Square body design for superior strength
- 3-point sealing system prevents internal contamination
- Redesigned piston increases surface contact to working steel
- Improved dampening system keeps breaker properly secure in cradle to reduce wear
- Qtv cradle for improved protection, sound suppression and dampening
- Increased and improved lubrication to critical components
- Longer thrust bushing for increased internal alignment also insures direct impact with piston

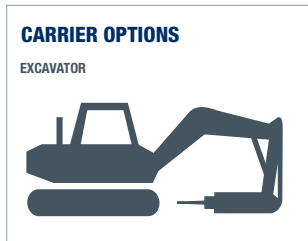


INNOVATIVE TECHNOLOGY THAT MAKES A DIFFERENCE



IMPACT ENERGY CLASS	5,250 ft. lbs.
*Total Weight in Lbs (kg)	3,758 (1,705)
*Total Length in Inches (mm)	119 (3,026)
Working Steel	
Diameter in Inches (mm)	5.51 (140)
New Length of Steel Measured from Front Face in Inches (mm)	30.3 (770)
Replaceable Steel Length, Measured from Front Face in Inches (mm)	17.72 (450)
General Specifications	
Adjustable Blows Per Minute (BPM)	350 ~ 550
Acceptable GPM Range (LPM)	38 ~ 58 (144 ~ 220)
Acceptable PSI Range (Bar)	2,320 ~ 2,610 (160 ~ 180)
85 dB(A) @	~ 14 meters
Recommended Carrier Range in U.S. Tons (tonnes)	21 ~ 33 (19 ~ 30)
Carrier Options	■

***Note:** Total weight and total length include standard working steel and universal top cap less mounting pins and bushings.



www.frdusa.com

CORPORATE HEADQUARTERS
711 Lake Street, Kent, OH 44240
Ph: 330-673-5826
Fax: 330-677-1616
Toll Free: 1-800-527-2282

SOUTHEAST SALES AND SERVICE FACILITY
155 Dexter Road
Spartanburg, SC 29303
Ph: 864-541-0125

WEST COAST SALES AND SERVICE FACILITY
7730 Security Circle
Reno, NV 89506
Ph: 775-260-7366