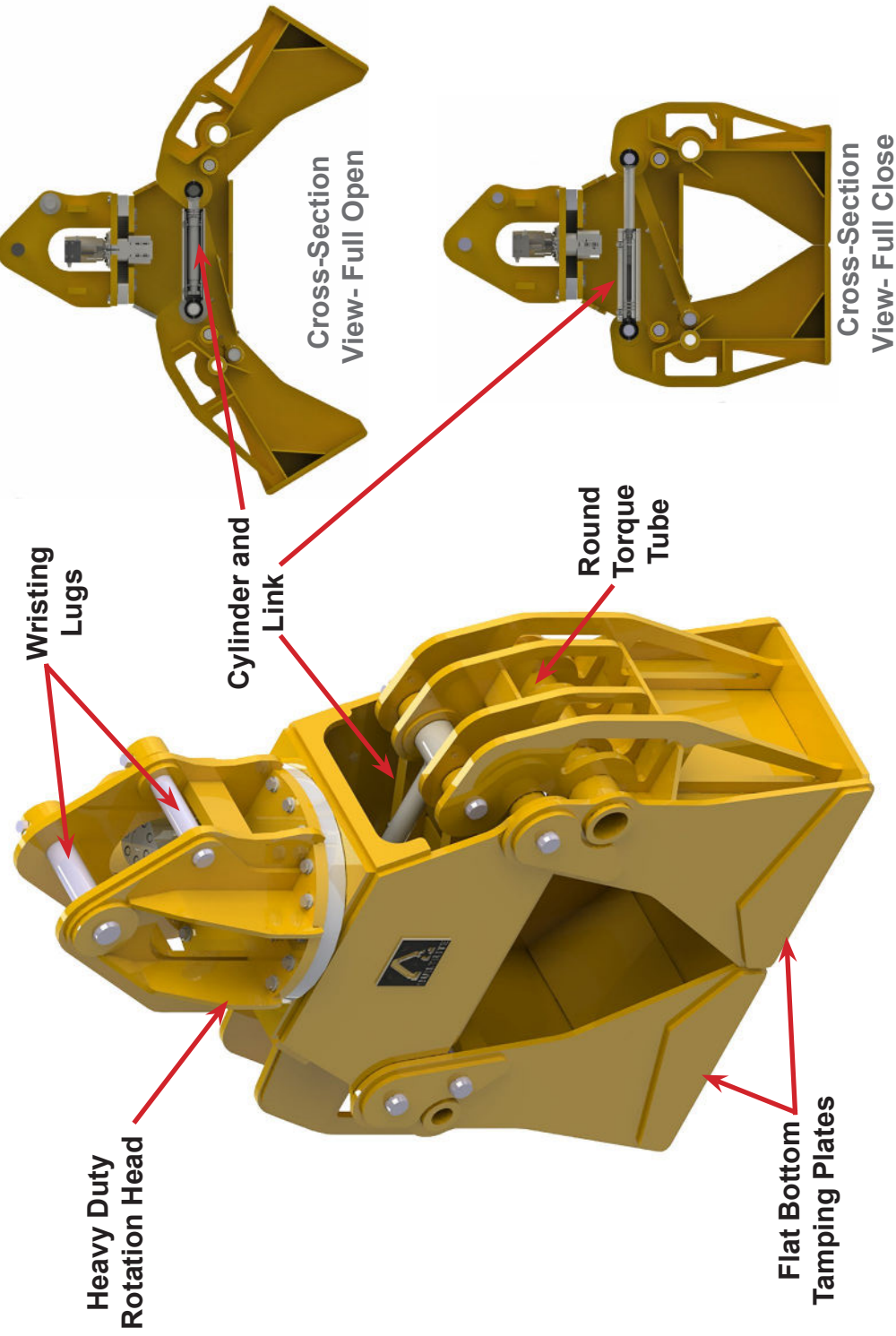


The **Builtrite, Single Cylinder Tamping Grapple** is designed for loading, sorting and tamping municipal solid waste and construction & demolition waste into truck trailers and dumpsters. The transverse mounted, single cylinder is completely enclosed inside of the grapple's lower head, keeping it out of harm's way and preventing debris from building up underneath the cylinder, which is a common problem with two cylinder design units mounted on the grapple arms.

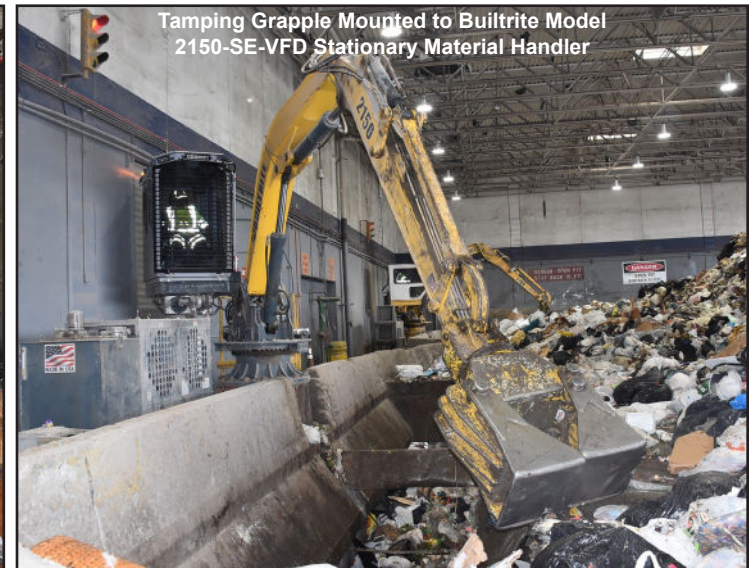
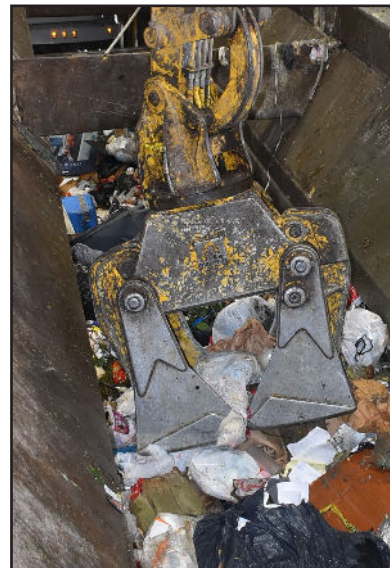
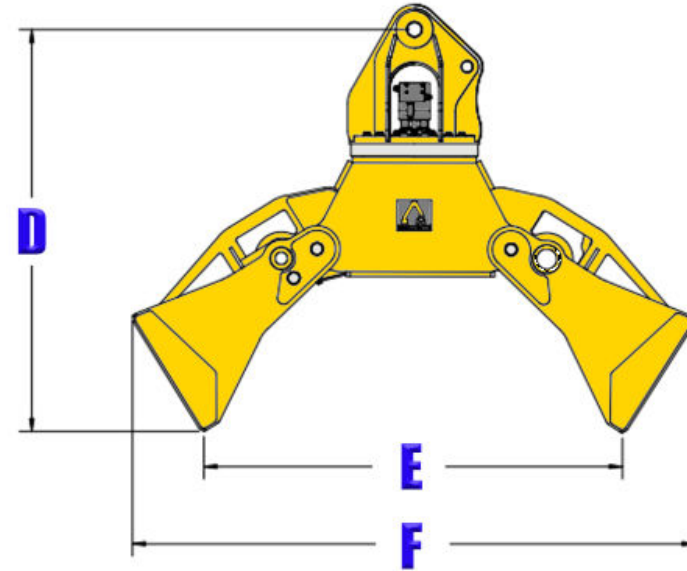
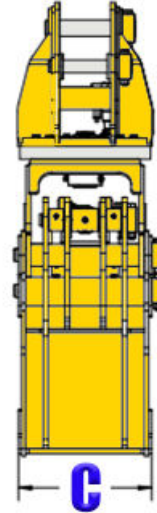
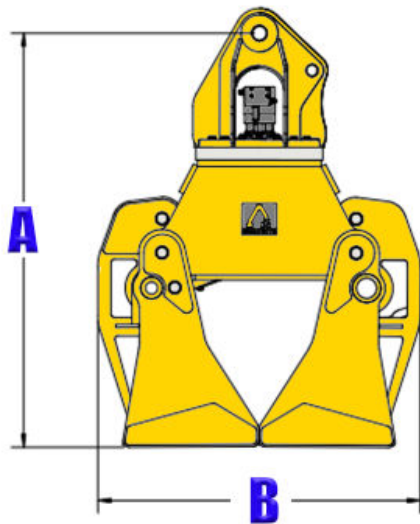
This grapple is offered for both Builtrite Stationary Loaders and 13-24 Metric Ton excavators. Built with 100,000 KSI, yield strength steel in its grapple arms, this grapple is designed to perform in extreme conditions, providing maximum durability and low maintenance, reducing your downtime. Key features include:

- High pressure, well protected cylinder, encased in the lower housing.
- Heavy duty rotation using a high torque motor and heavy duty bearing.
- Grapple arms constructed of high strength, abrasion resistant steel.
- The jaws are connected with both the cylinder and timing link, which allows the jaws to be synchronized when opening and closing.
- Oversized, hardened cylinder and pivot pins.
- Easily accessible, yet well protected grease zerks.



Tamping Grapple Specifications

Model	Weight		(A)		(B)		(C)		(D)		(E)		(F)	
	Lbs.	Kg.	in.	mm	in.	mm	in.	mm	in.	mm	in.	mm	in.	mm
TG 20	2,450	1,113	67	1,702	52	1,321	21	533	65	1,651	68	1,727	91	2,311



Tamping Grapple Mounted to Bultrite Model 2150-SE-VFD Stationary Material Handler

Hydraulic Requirements

	FUNCTION	FLOW GPM / LPM	PRESSURE PSI / Bar
TG 20	Open / Close	16-20 / 60-75	2,500-5,000 / 172-345
	Rotation	6-8 / 23-30	1,800 / 124

BUILTRITE LEMCO RESERVES THE RIGHT TO CHANGE SPECIFICATIONS AND PRICES WITHOUT NOTICE IN ORDER TO FOLLOW ITS POLICY OF CONSTANTLY STRIVING TO MANUFACTURE A BETTER PRODUCT WITHOUT INCURRING ANY LIABILITY TO PROVIDE THESE NEW FEATURES ON ANY UNITS PREVIOUSLY MANUFACTURED.

