



## Truck Mounted Material Handlers

### Model 1010-TM-Railroad Out & Down Stabilizers

**Builtrite™, Heavy Duty, Truck Mounted Material Handlers (Back of Cab and Tail Mounts)** have proven themselves as the tool of choice in the railroad industry, assisting in a wide variety of track maintenance applications. From handling rail and ties to tools, the 1010-TM helps get the job done faster, easier and safer. It is capable of handling almost 5000 Lbs. (2,273 Kg.) at full reach (22'4" / 6.8M), making this the most versatile tool in a maintenance gang's arsenal.



## Features and Specifications:

### Lift Capacity (Less attachment)

- 10,000 Lbs. (4,545 Kg.) @ 10' (3M) R
- 7,000 Lbs. (3,182 Kg.) @ 15' (4.57 M) R
- 6,000 Lbs. (2,727 Kg.) @ 20' (6M) R
- 4,900 Lbs. (2,227 Kg.) @ Full Reach

### Boom Data (See other side for options)

- Horizontal Reach = 25'8" (7.8M)
- Vertical Reach = 37'0" (11.3M)
- Main Boom Length = 13'10" (4.2M)
- Jib Boom Length = 11'10" (3.6M)
- High yield, fabricated steel construction.
- 2.5" (64mm) boom pivot and 2" (51mm) cylinder pins with magnesium bronze bushings at all pivot points.

### Boom Cylinders

- One 7" (178mm) bore x 36" (914mm) stroke x 3" (76mm) rod main boom cylinder.
- One 6" (152mm) bore x 32" (813mm) stroke x 3" (76mm) rod jib boom cylinder.
- Double acting, heavy walled, honed cylinder tube.
- Wear rings on both pistons and glands.
- Rods with heavy chrome plating.



### Swing System

- 550° Non-continuous rotation with mechanical stops or 360° continuous.
- 27" (686mm) diameter (O.D.), external tooth turntable bearing, powered by one swing motor and planetary swing drive.

### Platform

- Rotating operator's platform with fold-down, adjustable seat and 2-lever, mechanical joysticks.
- Foot controlled swing.
- Safety guard rail around operator.

### Main Frame

- High tensile, heavy wall rolled steel tube.
- Overall height 13'4" (4.1M) mounted on 40" (1.0M) high truck frame.

### Stabilizers

- Two, horizontal out-vertical down stabilizers with swivel pads.
- Load lock valves on cylinders.
- Control valves are mounted on rotating platform for easy operator access.
- Dual, heavy duty ladders.

# Specifications (cont.) & Range Diagram

## Miscellaneous

- Requires 28" (711mm) of mounting space.
- Mounting bolts and support plates included.
- Approximate weight with standard equipment (less attachment and oil) is 6,500 Lbs. (2,955 Kg.).

## Options/Accessories

- Boom choices include: 22'8" (6.9M) two piece (standard), 22'8" (6.9M) two piece with 3' (914mm) telescopic & 25'8" (7.8M) two piece.
- Radio remote control package.
- Servo control package with hand swing control versus foot swing.
- Hand swing control in lieu of foot swing.
- Various grapples and other attachments available.
- Trailer mount frame package.
- Various custom lighting packages.
- Custom colors to match customer preference.

A Model 1010-TM set up with out and down outriggers, a magnet package with a 280° rotating, 1/3 cord by-pass grapple. →

## Available Attachments

We offer a wide variety of attachments including:



Bypass Pulpwood Grapple shown with 360° Indexator Rotator



Municipal Waste Grapple shown with 280° Rotator

## Hydraulic Reservoir

Note: Reservoir is shipped loose for remote mounting.

- 45 Gallons (208 Liters) with suction and return line filters.
- Air to oil cooler with 12 volt fan (shipped loose).

## Power Source

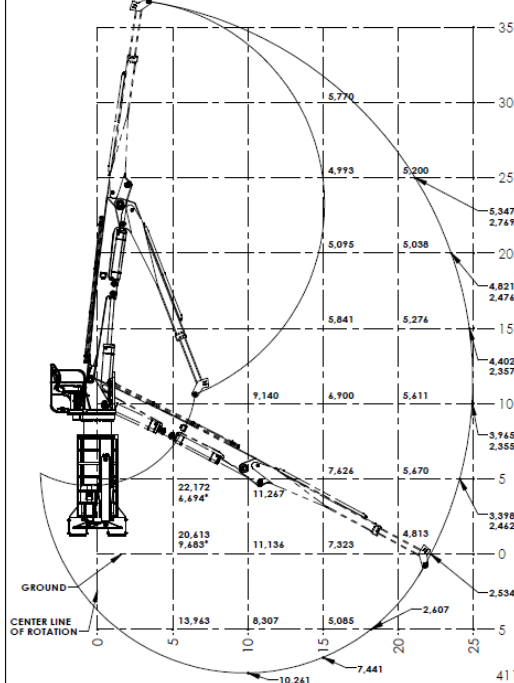
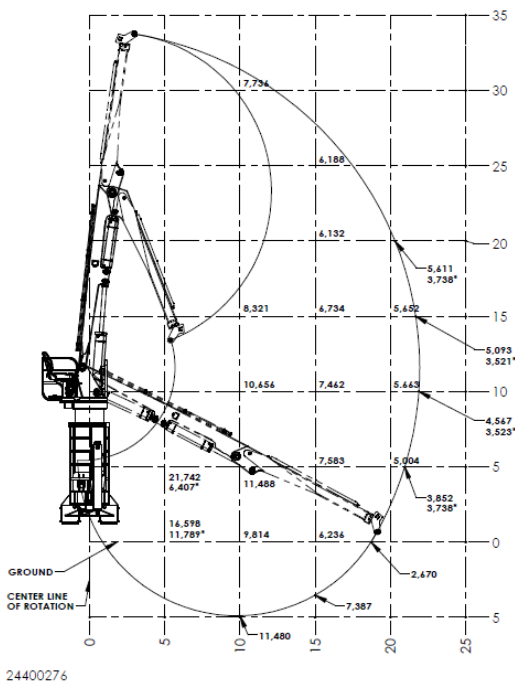
- Power take-off from truck engine.

## Pump

- Triple gear pump providing 30/30/15 GPM (114/114/57 LPM) @ 1400 RPM
- 2000 PSI (138 Bar) operating system.

## Control Valves

- Stack type with mechanical joystick controls.



BUILTRITE MANUFACTURING RESERVES THE RIGHT TO CHANGE SPECIFICATIONS AND PRICES WITHOUT NOTICE IN ORDER TO FOLLOW ITS POLICY OF CONSTANTLY STRIVING TO MANUFACTURE A BETTER PRODUCT WITHOUT INCURRING ANY LIABILITY TO PROVIDE THESE NEW FEATURES ON ANY UNITS PREVIOUSLY MANUFACTURED.

## Builtrite Manufacturing

530 Recycle Center Drive, Two Harbors, Minnesota, U.S.A. 55616

Web: [www.builtritehandlers.com](http://www.builtritehandlers.com) E-Mail: [info@builtritehandlers.com](mailto:info@builtritehandlers.com) Phone: 218-834-5555 Fax: 218-834-5556

