

The **Builtrite, 2/3 Tine, Free Hanging Grapple** is offered in three different sizes, to fit excavators and material handlers from 18-45 metric tons. It can handle a wide variety of materials, including automobiles, loose scrap, bales, C&D debris, brush, logs and rock. This grapple is excellent for loading and unloading stationary shears, balers and shredders. Its opposing jaw design is adept at aligning materials in the same plane, making it easier to load these machines. Built with 100,000 KSI, yield strength steel in its grapple arms and using AR 500 abrasion resistant tine tips, this grapple is designed to perform in extreme conditions, providing maximum durability and low maintenance, reducing your downtime. Key features include:

- High pressure, well protected cylinders.
- Heavy duty rotation using a high torque motor and heavy duty bearing.
- Grapple arms constructed of high strength, abrasion resistant steel. Tine tips made from AR 500 plate for maximum wear resistance.
- Mechanical stops prevent cylinders from over-stroking.
- Heavy walled torque tubes run the entire width of the grapple frames, minimizing torsional (twisting) stresses.
- Oversized, hardened cylinder and pivot pins.
- Easily accessible, yet well protected grease zerks.

If you're looking for the toughest, most durable grapple on the market, look no further and make it a **Builtrite**.

**Heavy Duty  
Cylinder Shrouds**

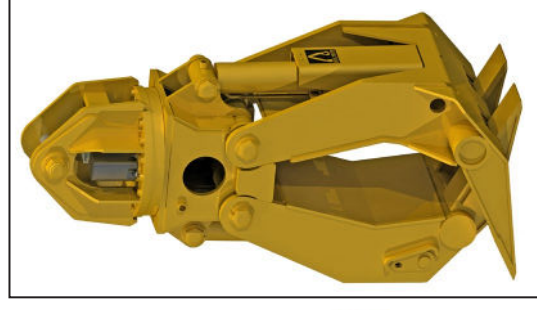
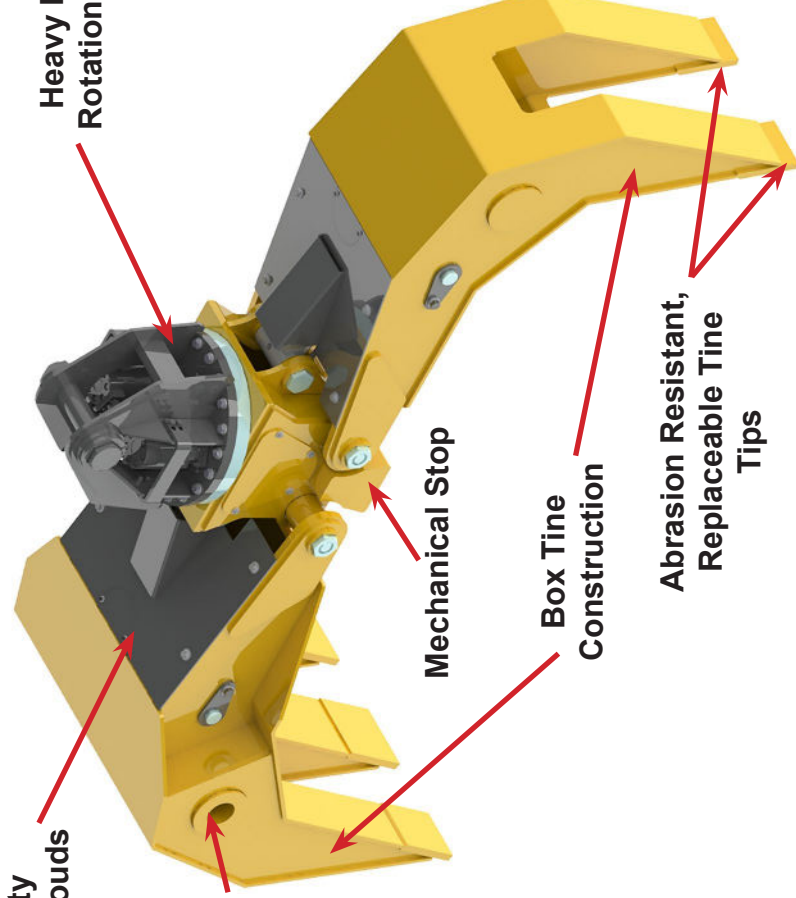
**Heavy Duty  
Rotation Head**

**Heavy Walled  
Torque Tube  
(Both Jaws)**

**Mechanical Stop**

**Box Tine  
Construction**

**Abrasion Resistant,  
Replaceable Tine  
Tips**



Closed Position  
2/3 Tine, 20T Shown

Model 2-3 Tine, 45T Shown

**Builtrite Lemco**

530 Recycle Center Drive  
Two Harbors, MN 55616

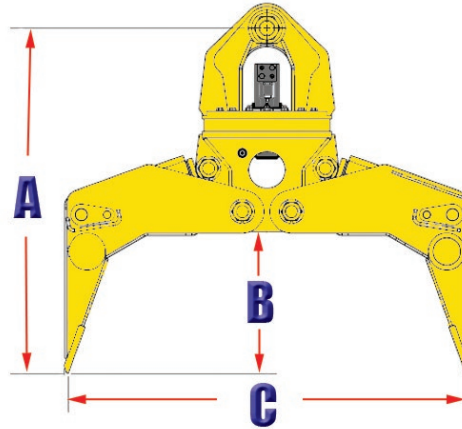
📞 **218-834-5555** ✉️ [sales@builtrite.com](mailto:sales@builtrite.com) 🌐 [www.builtrite.com](http://www.builtrite.com)  
P/N 2/3 SG Hanging 5-13-2024 © May 2024



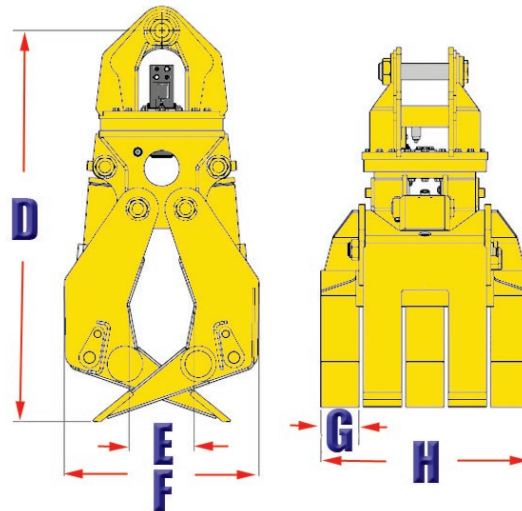
**TENAMEC**  
ENGINEERED TOUGH

# 2/3 Tine, Free Hanging Grapple Specifications

Model	Weight		(A)		(B)		(C)		(D)		(E)		(F)		(G)		(H)	
	Lbs.	Kg.	in.	mm	in.	mm	in.	mm	in.	mm	in.	mm	in.	mm	in.	mm	in.	mm
2/3 SG-H 20T	2,400	1,091	56	1,422	23	584	65	1,651	66	1,676	6.375	162	32.6	828	6.375	162	35	889
2/3 SG-H 30T	2,885	1,311	57	1,449	20	508	96	2,438	73	1,854	13	330	35	889	6.375	162	35	889
2/3 SG-H 45T	4,200	1,909	69	1,753	36	914	105	2,667	85	2,159	17	432	42	1,067	7	178	39	991



Note: 2/3 SG-H 20T Graphic. The geometry of the other two models changes slightly. An actual dimensional sheet and rendering can be supplied upon request.



Hydraulic Requirements			
	FUNCTION	FLOW GPM / LPM	PRESSURE PSI / Bar
2/3 Tine, 20T	Open / Close	16-20 / 60-75	2,500-5,000 / 172-345
	Rotation	4-6 / 13-21	1,800 / 124
2/3 Tine, 30T	Open / Close	16-20 / 60-75	2,500-5,000 / 172-345
	Rotation	4-6 / 13-21	1,800 / 124
2/3 Tine, 45T	Open / Close	20-24 / 75-91	2,500-5,000 / 172-345
	Rotation	4-6 / 13-21	1,800 / 124

BUILTRITE LEMCO RESERVES THE RIGHT TO CHANGE SPECIFICATIONS AND PRICES WITHOUT NOTICE IN ORDER TO FOLLOW ITS POLICY OF CONSTANTLY STRIVING TO MANUFACTURE A BETTER PRODUCT WITHOUT INCURRING ANY LIABILITY TO PROVIDE THESE NEW FEATURES ON ANY UNITS PREVIOUSLY MANUFACTURED.

