

Waler Systems

When excavating in less stable soils requiring close or intermittent sheeting, count on Speed Shore Waler Systems for trench wall support. Their lightweight construction allows for quick installation and removal completely from above ground, keeping personnel safely out of unshored trenches.

Available in both standard, medium, and heavy-duty configurations, Speed Shore Waler Systems cover an expansive range of soil and sheeting variations to meet site-specific shoring requirements. Selection of the proper system will provide unequalled support for timber, steel, or fiberglass sheeting while maximizing workspace within the open bays.

For extreme ground conditions, all Speed Shore Waler Systems may be reinforced with the insertion of additional cylinders at any point along the wale. In addition, Speed Shore's innovative Speed Struts® may be quickly adapted to allow for full end-loading capability.



Waler Systems Offer Unequalled Support In Unstable Soils

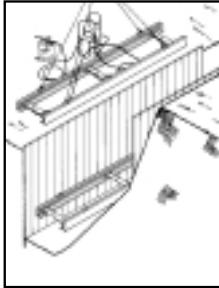
- **100% Above-Ground Installation**
eliminates worker exposure to dangerous trench collapses.
- **Aluminum Alloy Construction**
provides lightweight, extremely portable systems of exceptional strength.
- **Easy-To-Use Hydraulic System**
provides precise control of cylinder pre-load with a gauge-regulated handpump.
- **Expansive Waler Range**
assures that Speed Shore's Waler Systems are P.E. Certified for use in A, B, C-60, and C soils.
- **Optional One-Piece Extensions**
are easily installed at the jobsite, extending the cylinder operating ranges to cover a variety of trench widths.

SPEED  **SHORE**®
PIONEERING TRENCH SAFETY

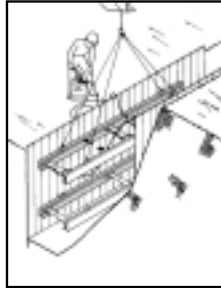
Simple Installation & Removal

100% Above-Ground Installation and Removal

INSTALLATION IS FAST AND EASY—PLACE AS YOU DIG



Connect hose manifold to waler and pump. Attach lifting sling to waler.



Lift waler and lower into trench. Pump waler strut up to proper pressure.



Disconnect lifting sling. Disconnect hose with release tool.

SAFE, QUICK REMOVAL



Attach lifting sling to waler. Bleed shoring fluid with tool and allow waler to slowly collapse. Lift waler out of trench.

Tools & Accessories



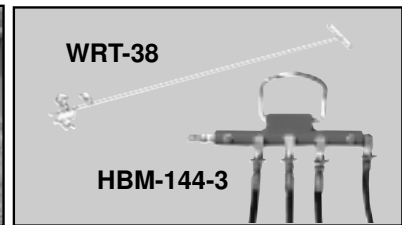
HP-100



HP-150



HP-200



WRT-38

HBM-144-3

Speed Shore Waler Systems are rapidly installed (pressurized) with two specially designed shoring pumps. The economical HP-100 metal and HP-150 polyurathane containers have a 5 to 7.5 gallon fluid reservoir, and are light enough to hand carry. The battery-powered HP-200 has a 12-gallon reservoir and is wheel-mounted for ease of transport along the trench. All pumps have easy-to-read pressure gauges and convenient control valves. Our water-based Summer and Winter-grade Shoring Fluids are environmentally safe, cost-effective, and cover a full range of operating temperatures.

Specially designed Waler Release Tools (WRT-38, WRT-48 & WRT96) accommodates easy installation and removal of shores. They are available in 30", 48", and 96" lengths. The HBM-144-2, HBM-144-3, & HBM-144-4 hydraulic manifolds with quick-connect hoses controls the fluid level of the 2, 3 or 4 hydraulic cylinders per waler system.

Pioneer of the World's Most Advanced Trench Safety Systems



Shoring Shields®

Vertical Shores

Waler Systems

Excavation Braces

Modular Alum. Panel Systems

Aluminum Trench

Steel Trench Shields

Manhole Shields

Manguard® Shields

Slide-Rail Systems

Mega-Shore® Systems

Bedding Boxes

SPEED SHORE®
PIONEERING TRENCH SAFETY

3330 S. SAM HOUSTON PKWY E. ■ HOUSTON, TEXAS 77047
(713) 943-0750 ■ FAX (713) 943-8483 ■ USA TOLL FREE: 1-800-231-6662
www.speedshore.com

Authorized Distributor